



Linton Rise, Summercourt, TR8 5AE

david ball
Agencies

Embrace the charm of countryside living with this exceptional five-bedroom bungalow, set within approximately four acres of scenic land. Boasting breathtaking views in every direction, this home offers both privacy and tranquillity behind a secure gated entrance. Designed for comfortable rural living, the property includes oil-fired central heating, generous parking for multiple vehicles, and a range of additional features. A two-berth caravan provides ideal guest accommodation, while a versatile outbuilding offers ample space for storage or creative pursuits. Whether you're seeking a peaceful retreat or a place to enjoy country pursuits, this property delivers a lifestyle of relaxation and space. Offered with no onward chain, a seamless move awaits. Early viewing is highly recommended to truly appreciate everything this countryside gem has to offer.

Asking Price £649,500 Freehold

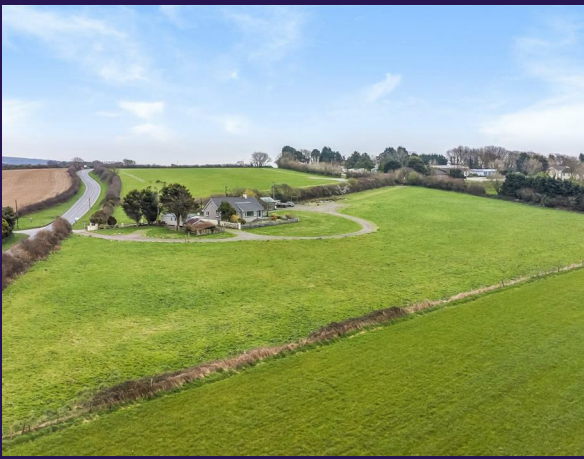
Key Features

- Large detached five bedroom rural bungalow.
- Oil fired central heating
- Separate two berth caravan
- Workshop
- Kitchen with central island
- Gated drive
- Generous parking area
- Approx. 4 acres of land

Location

Ideally located between the villages of Summercourt and Quintrell Downs, near the picturesque coastal town of Newquay on the north Cornish coastline, this property offers easy access to some of Cornwall's finest attractions. Stunning beaches stretch along the coast from Watergate Bay to Padstow, popular with surfers and families alike. The area also provides a wide range of leisure activities, including horse riding, sailing, and scenic walking trails. For added convenience, Newquay Airport is just about 9 miles away, making travel easy and accessible.





The Property

The property opens into a spacious entrance hallway, providing access to all living and bedroom areas. The main reception room is generously sized, featuring a large window that frames sweeping views over the surrounding farmland. Its focal point is a charming open fireplace with an oak mantle. The kitchen and breakfast area are completed to a high standard, boasting a central island and modern appliances, including a Rangemaster oven with a double extractor—ideal for family cooking or entertaining. Two sets of French doors lead out to a spacious side terrace, perfect for alfresco dining and barbecues. Adjacent to the kitchen is a separate utility room and a cloakroom WC. The property offers up to five bedrooms, though some are currently used for additional purposes: one as a secondary reception room or snug, and another as a games room, showcasing the versatility of the space. Finally, a beautifully finished family bathroom includes both a bath and a double shower cubicle, completing the home's impressive internal accommodations.

Caravan

Set within this expansive property lies a charming four-berth caravan, boasting the com-forts of LPG central heating. Step into the inviting open-plan living area, complemented by two snug bedrooms, one of which features an en-suite for added convenience. Shower room ensure. Notably, this caravan holds a certificate of lawfulness for residential use, offering a flexible and comfortable living arrangement amidst the picturesque surroundings

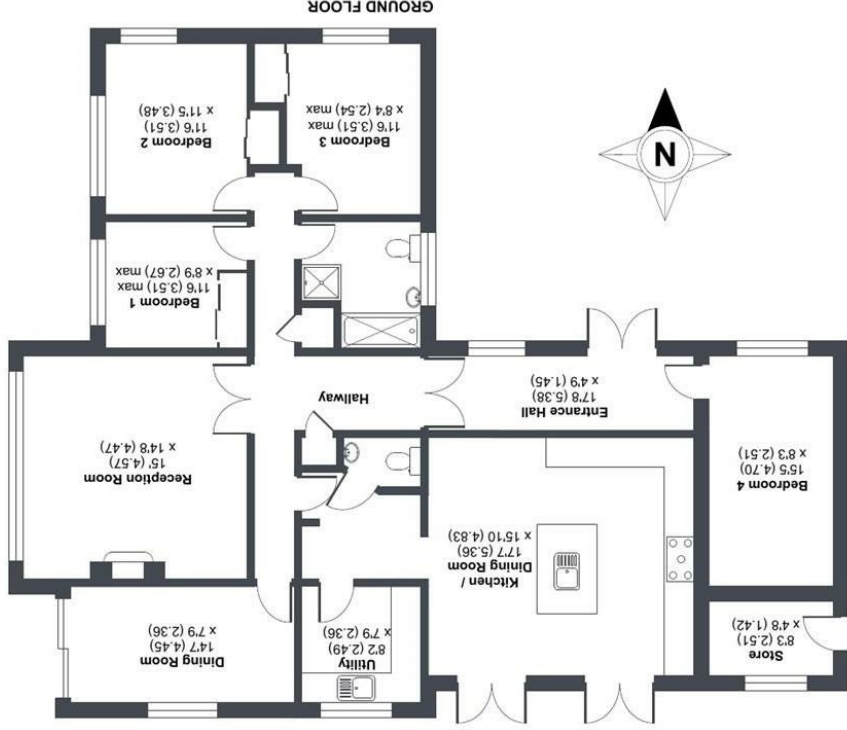
Externally

Linton Rise is nestled in a serene setting, surrounded by green spaces both at the front and rear. A gated driveway at the front provides privacy and security, while a secondary entrance on the right allows easy access to the rear of the property, where there is ample parking for multiple vehicles. The expansive grounds present excellent potential for paddocks and grazing, making it an ideal choice for equestrian or agricultural pursuits, and adding to the appeal of this countryside retreat.

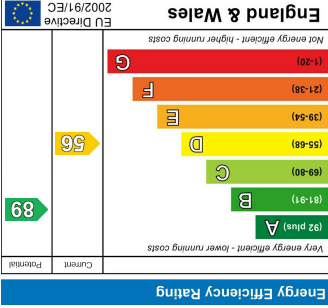
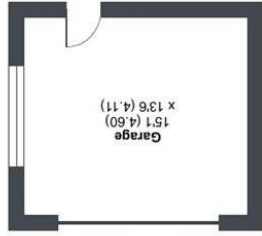


Linton Rise, Summercourt, Newquay, TR8

Approximate Area = 1836 sq ft / 170.5 sq m (includes garage)
Annex = 429 sq ft / 39.8 sq m
Total = 2265 sq ft / 210.4 sq m
For identification only - Not to scale



Floor plan produced in accordance with RICS Property Measurement Standards (IPMS2 Residential). © nchecom 2024.
International Property Measurement Standards (IPMS2 Residential). REF: 1102581
Produced for David Ball Agencies.



David Ball Agencies

01637 850850

www.davidballagencies.co.uk



e.sales@dba.estate 34 East Street, Newquay, Cornwall TR7 1BH

Connecting People to Property Perfectly

1. Particulars: these particulars are not an offer or contract nor part of one. You should not rely on statements by David Ball Agencies (DBA) in the particulars or by word of mouth or in writing as being factually accurate about the property, its condition or value. Neither DBA nor any joint agent has any authority to make any representation about the property or development and accordingly any information given is entirely without responsibility in the part of the agents, sellers or lessors. 2. Images paragraphs and other information: any computer generated images, plans, drawings, accommodation schedules, specifications details or other information provided about the property ("information") are indicative only. Any such information may change at any time and must not be relied upon as being factually accurate about the property. Any photographs are indicative of the quality and style of the development and do not represent the actual fitting and furnishing at this development. 3. Regulations: any reference to alterations to the property or use of any part of the development is not a statement that any necessary planning, building regulations or other consents has been obtained. These matters must be verified by an intending purchaser. 4. Fixtures and fittings: supplied services and appliances have not been tested by the vendors agent. Prospective purchasers are advised to make their own enquiries. 5. All dimensions are approximates.