



1 Pound Cottage

London Road, Blewbury, Oxfordshire. OX11 9NY



Hodsons
...your move, our passion
Sales | Lettings

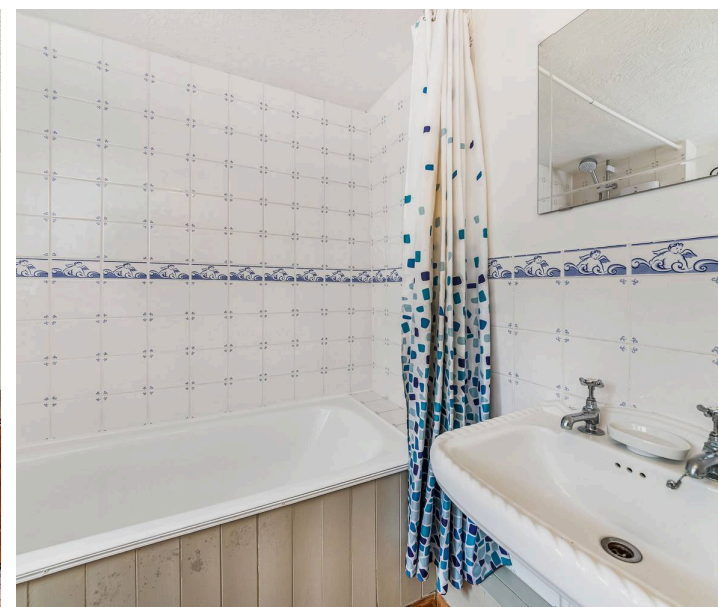
1 Pound Cottage

London Road, Blewbury

This attractive period cottage in a highly sought-after central position within the picturesque Oxfordshire village of Blewbury. Enjoying a peaceful outlook over open green space, the property offers a charming and tranquil setting while remaining conveniently placed for village amenities and surrounding countryside walks.

Internally, the accommodation includes a welcoming living room centred around an open fireplace with a wood-burning stove, creating a warm and inviting focal point. The well-proportioned kitchen provides ample space for a dining table and chairs, with doors opening directly onto the south-facing rear garden, making it ideal for everyday living and entertaining. A ground-floor bathroom completes the accommodation at this level, while upstairs there is a generous principal bedroom alongside a well-sized second double bedroom.

Externally, the cottage benefits from a mature garden brimming with established shrubs, trees, vegetable beds and pond. To the rear of the property there is parking for two vehicles with access to the double garage. The village of Blewbury offers a vibrant community with a local pub, village shop and excellent walking routes, while transport connections are well served via the A34, Reading Road and regular bus services to Didcot. The property is offered with no onward chain and offering development opportunity, subject to the necessary planning consents, with access onto Pilgrims Way.





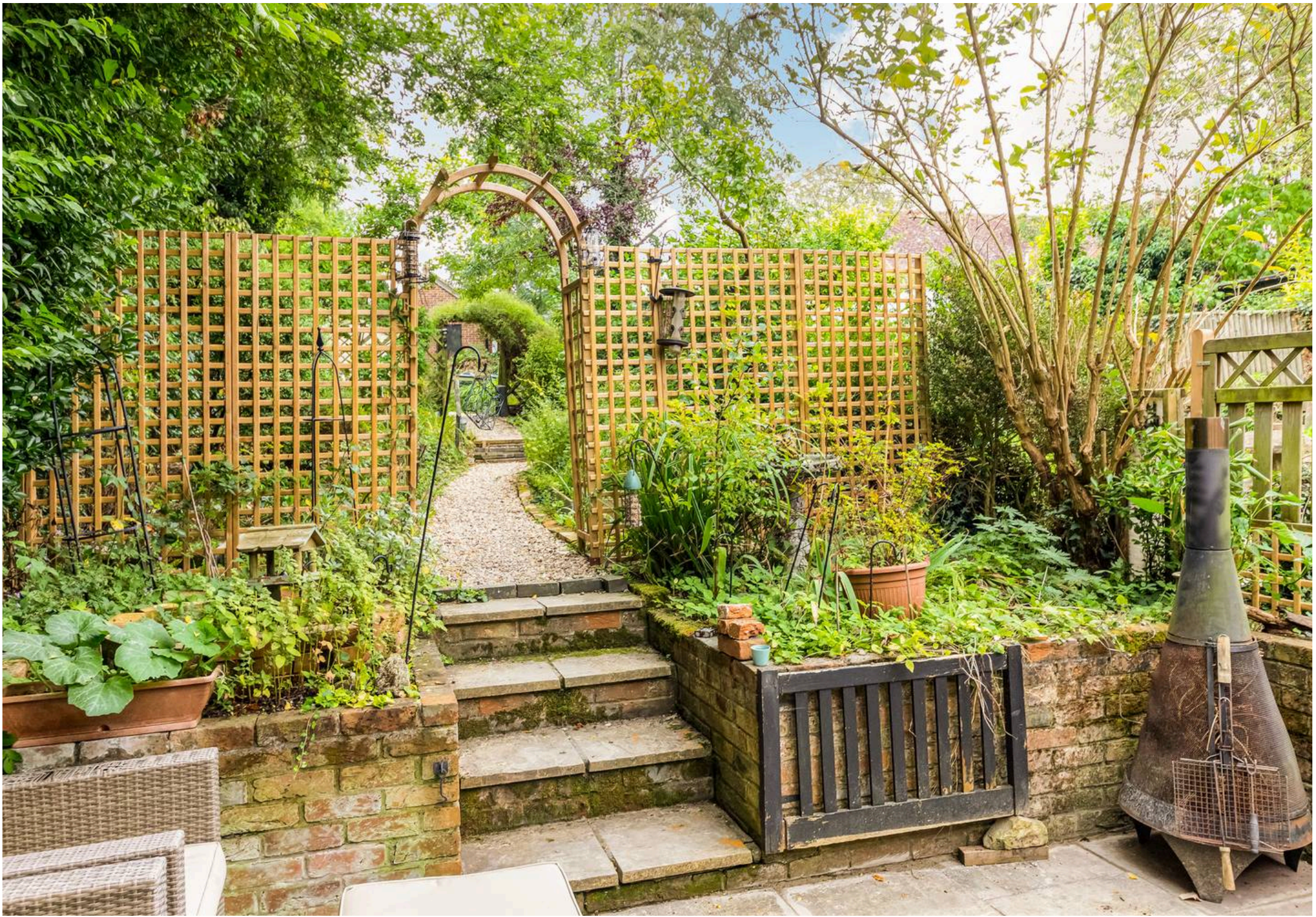
1 Pound Cottage

London Road, Blewbury

- Attractive period cottage in a highly sought-after Oxfordshire village, being sold with no chain
- Desirable central village position overlooking open green space
- Comfortable living room featuring an open fireplace with wood-burning stove
- Well-proportioned kitchen with space for a dining table and chairs, with doors opening onto the south-facing garden
- Generous principal bedroom and second well-sized double bedroom
- Rear parking for two vehicles with access to the garage
- Mature garden with established shrubs, trees, vegetable beds and pond
- Peaceful setting in the village of Blewbury, within easy walking distance of the local pub, village shop and scenic countryside walks
- Excellent transport links via the A34 and Reading Road, with a regular bus service through the village to Didcot
- Exciting development opportunity, subject to the necessary planning consents, with access onto Pilgrims Way










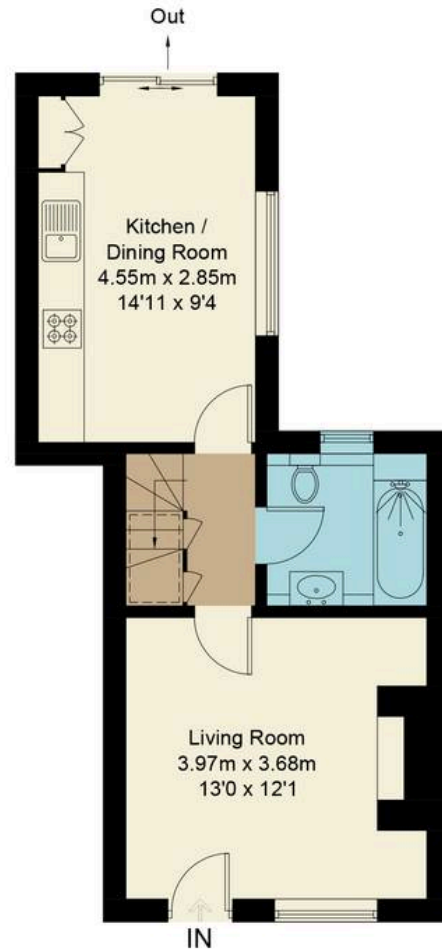




Pound Cottage, OX11

Approximate Gross Internal Area = 59.8 sq m / 644 sq ft
Garage = 22.8 sq m / 248 sq ft

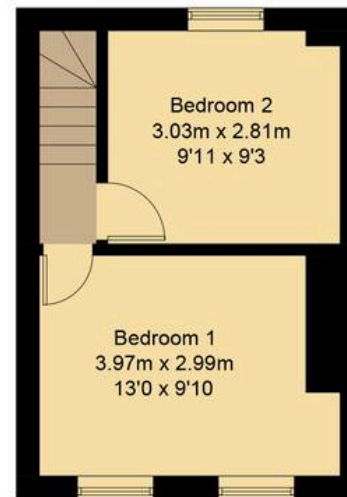
 = Reduced headroom below 1.5m / 5'0"



Ground Floor



(Not Shown In Actual
Location / Orientation)



First Floor



Floor plan produced in accordance with RICS Property Measurement Standards.
© Mortimer Photography. Produced for Hodsons.
Unauthorised reproduction prohibited. (ID1128991)



Hodsons
...your move, our passion
Sales | Lettings

220 Broadway, Didcot
Oxfordshire, OX11 8RS
T: 01235 511406
E: didcot@hodsons.co.uk
www.hodsons.co.uk