



New Wharf Road, N1

£3,300 Per calendar month

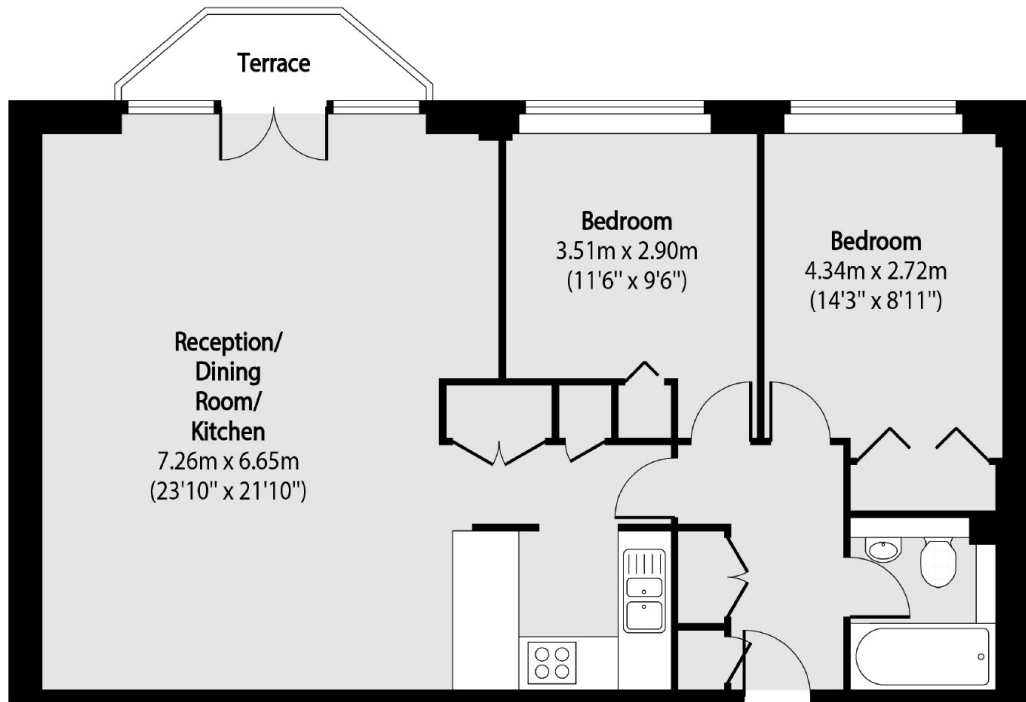
An very spacious and bright two double bedroom apartment on the third floor of this popular gated waterside development with 24 hour concierge.

Ice Wharf is a prime development next to Regent's Canal in King's Cross. The property is close to an array of shops, bars and restaurants including the newly developed Coal Drops Yard and just a few minutes walk away from Kings Cross St Pancras.

Features

- Two Double Bedrooms
- 24 Hour Concierge
- Canal Views
- Separate Kitchen
- Balcony
- Great location

New Wharf Road, London, N1



Total area (approx): 71.35 sq m (768 sq. ft)

Terrace total area (approx): 2.69 sq m (29 sq. ft)

Dexters

Bloomsbury
55-56 Coram Street
London
WC1N 1HB
Lettings
020 7833 4488

Energy Rating: C. We aim to make our particulars both accurate and reliable. However they are not guaranteed; nor do they form part of an offer or contract. If you require clarification on any points then please contact us, especially if you're traveling some distance to view. Please note that appliances and heating systems have not been tested and therefore no warranties can be given as to their good working order.

 **RICS** | Regulated
Estate Agent
and Letting Agent

dexters.co.uk