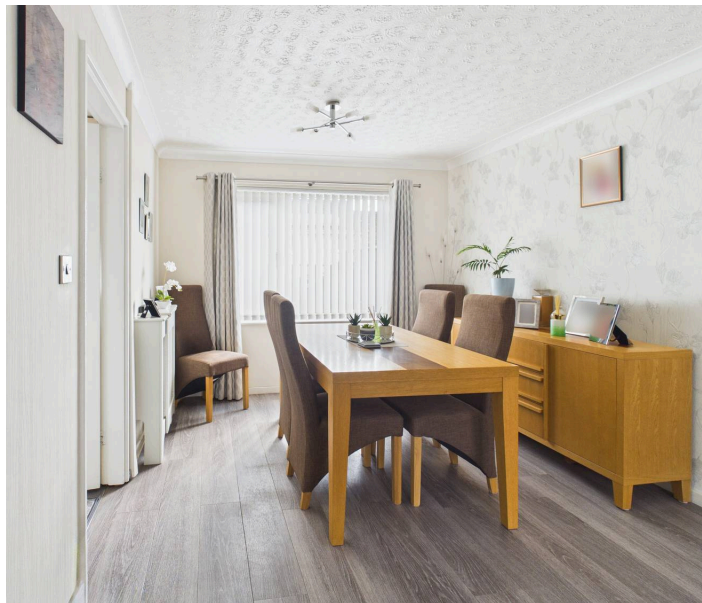




3 Teak Close, Nottingham - NG3 4PP

Guide Price £180,000



3 Teak Close

Nottingham, Nottingham

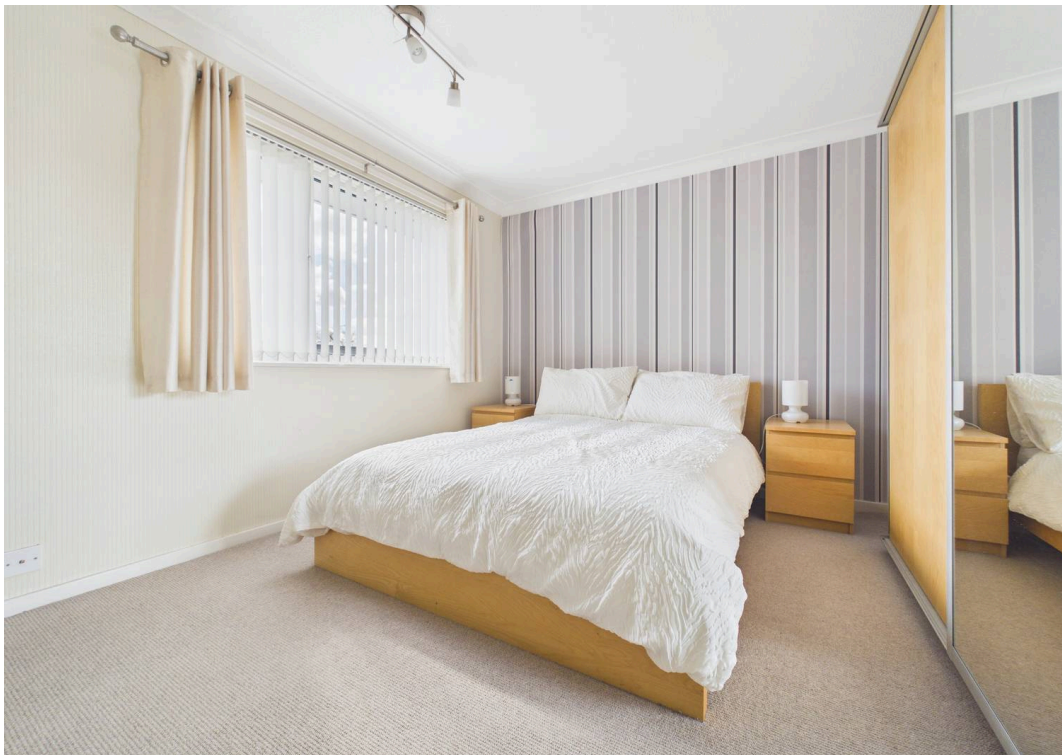
VIEWING HIGHLY RECOMMENDED! Mid-townhouse on a cul-de-sac with transport links, amenities and City Centre nearby! 3 beds, modern kitchen, dual aspect lounge/diner and southerly enclosed rear garden!

Council Tax band: A

Tenure: Freehold

- Mid-townhouse with well-presented interiors
- Convenient location with the City Centre close by
- Ideally positioned for shops, amenities and excellent public transport links
- Excellent opportunity for a family, first-time buyer or investor
- Welcoming entrance hallway with ground floor WC
- Modern fitted kitchen with integrated cooking appliances
- Bright lounge/dining room with dual aspect windows
- Three first floor double bedrooms
- Modern three-piece bathroom suite with electric shower over bath
- Enclosed, low-maintenance and southerly-facing rear garden







Floor 0



Floor 1



Approximate total area⁽¹⁾
79.8 m²
859 ft²

Reduced headroom
0.6 m²
7 ft²

(1) Excluding balconies and terraces

Reduced headroom
----- Below 1.5 m/5 ft

Calculations reference the RICS IPMS 3C standard. Measurements are approximate and not to scale. This floor plan is intended for illustration only.

GIRAFFE360



David James Estate Agents

David James Estate Agents, 45B Plains Road - NG3 5JU

0115 962 4213 • mapperley@david-james.com • www.david-james.com

These particulars are produced in good faith and are set out as a general guide only. Measurements are approximate and floor plans are for illustrative purposes only. Services have not been tested. We have established professional relationships with third-party suppliers for the provision of services to Clients, details of which can be found on the property listing page on our website.