



Flat 4, 65, Summerfield Crescent,

£170,000



*Victoria
Connaughton*

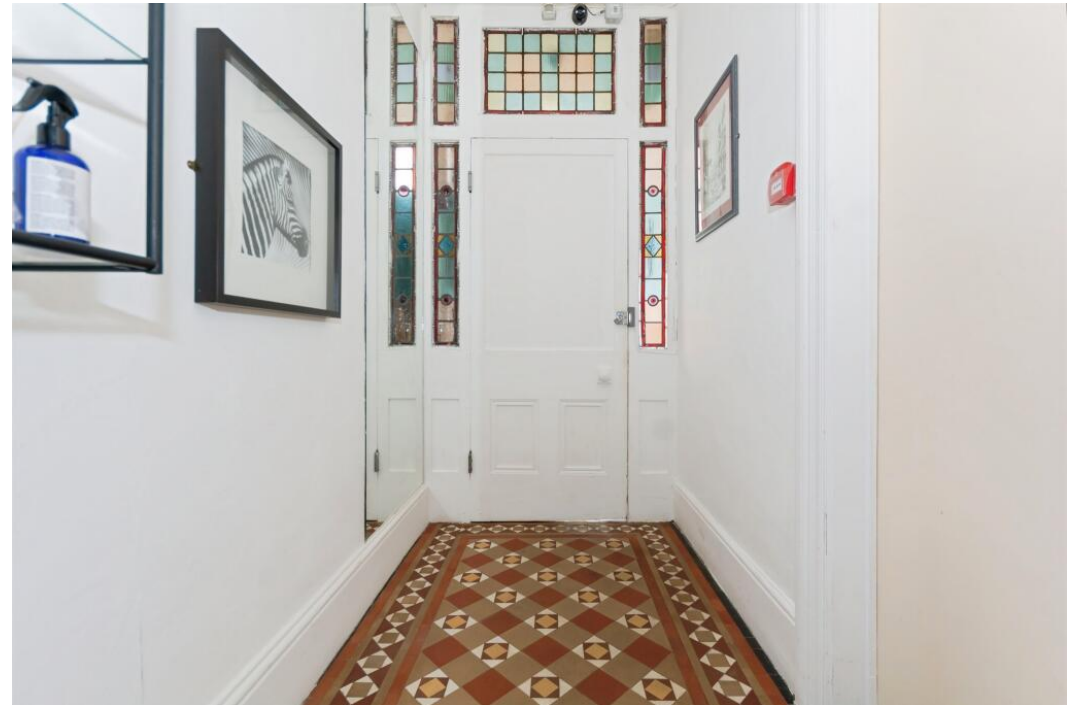
🌐 victoriaconnaughton.expuk.com

☎ 07512 580 305

✉ victoria.connaughton@expuk.com

Flat 4, 65, Summerfield Crescent,

A Modern two-bedroom apartment in the sought-after Edgbaston B16 area, backing directly onto Edgbaston Reservoir and offering excellent access to Birmingham City Centre.





Communal Entrance Door

with stairs leading to apartment.

Lounge

4.42m x 2.84m (14'6" x 9'4")

With double glazed window to rear, overlooking Edgbaston Reservoir, storage spaces, and doors leading off to Kitchen and both Bedrooms.

Fitted Kitchen

2.54m x 2.21m (8'4" x 7'3")

Double glazed window to rear, a range of fitted wall and base cupboards with worksurfaces over, oven and hob, washing machine, tumble dryer and fridge freezer, central heating radiator and door to Bathroom.





Bedroom 1

3.99m x 3.12m (13'1" x 10'3")

Double glazed window to side and front.
Radiator.

Bedroom 2

3.99m x 2.84m (13'1" x 9'4")

Double Glazed window to front, central
heating radiator.

Bathroom

Panelled bath with shower over, mixer tap and
glass shower screen door, wash hand basin,
low level flush WC, wall mounted boiler.

