



📍 7 Wyatt Court, Thomas Wyatt Road, Devizes, Wiltshire, SN10 5FF

🏠 Guide Price £497,500

A fabulous period home with parkland views and impressive accommodation, 2 parking spaces and a private courtyard garden.

- Elegant Grade II Listed Conversion
- Spacious And Versatile Layout
- Beautiful Parkland Setting
- Far Reaching Countryside Views
- Three Double Bedrooms
- Superb 23ft Dual Aspect Living Room
- Two Further Reception Rooms
- Enclosed Small Private Garden
- 2 Parking Spaces & Ample Visitor Parking
- Impressive Cellar- Ideal For Storage

🏠 Leasehold

🏠 EPC Rating C



A stunning and immaculately presented 3/4 bedroom Grade II listed period home, forming part of an elegant conversion of a former hospital designed by Thomas Wyatt in 1848. Set within beautiful parkland with communal gardens, the property also benefits from a private courtyard garden and parking for two cars.

The spacious and versatile interior comprises a large dining hall and modern kitchen/breakfast room with black and white tessellated floor tiles, and a useful study/ground floor bedroom with views out to the parkland. A utility/cloakroom completes the ground floor. On the first floor there is an elegant dual aspect 23ft drawing room with the original sash windows all featuring shutters, a recently redecorated generous double bedroom and a very stylish refitted family bathroom. On the top floor, the impressive principal bedroom suite has a walk-in dressing room and luxurious updated en suite shower room. From the large sash windows in the bedroom there are fine panoramic views. A further large double bedroom completes the accommodation.

Outside, steps lead down to three huge cellars with good head height, recently rewired and with light and power. These provide invaluable storage facilities as well as offering potential to convert (subject to planning). There is a private courtyard garden accessed off the kitchen, with slate floor, communal gardens and grounds and two private parking spaces with the benefit of ample visitor parking spaces on hand.

Situation

Wyatt Court, part of the prestigious Drews Park development, is an impressive conversion of a former hospital set close to the town centre, with attractive parkland and recreational areas nearby.

Devizes is a thriving historic market town offering a weekly market, the renowned Kennet and Avon Canal with its famous locks, and a wide range of shops, amenities, and schools. The town also benefits from excellent transport links to Swindon, Marlborough, the M4, and the A303, along with beautiful surrounding countryside.

Property Information

Council Tax: Band F

Services: All mains services are connected at the property. 'Honeywell Evohome' heating and hot water system whereby you can control each room temperature individually, also by your mobile phone.

Tenure: Leasehold. 999 year lease granted in 1998. The annual management charge to Aster is £1,927.46 and the ground rent is £129.68.

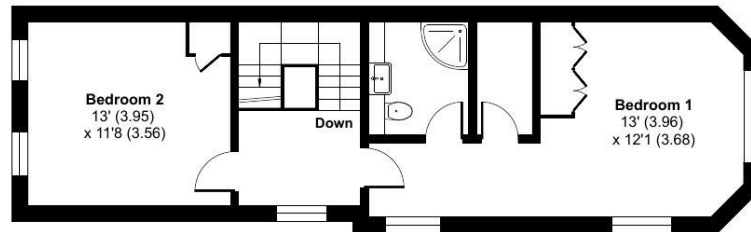
Communal bin and bicycle stores.



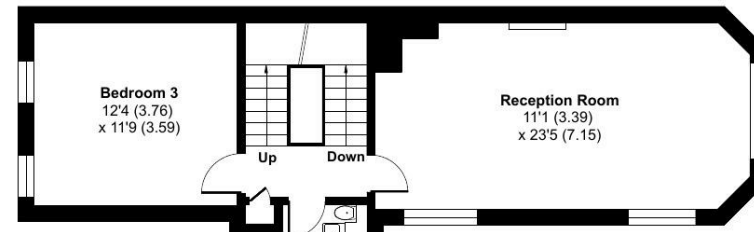
Thomas Wyatt Road, Devizes, SN10

Approximate Area = 2163 sq ft / 200.9 sq m

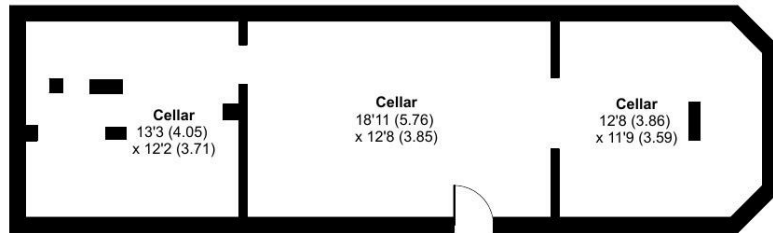
For identification only - Not to scale



SECOND FLOOR

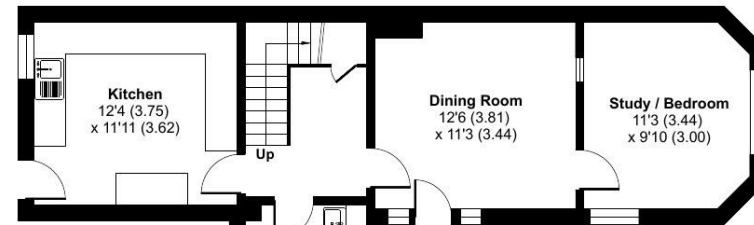


FIRST FLOOR



CELLAR

Bathroom
7'5" (2.26)
x 6'8" (2.03)



GROUND FLOOR

Utility
7'6" (2.29)
x 4'11" (1.49)

 Floor plan produced in accordance with RICS Property Measurement 2nd Edition, Incorporating International Property Measurement Standards (IPMS2 Residential). © nctechcom 2026. Produced for Strakers. REF: 1447713

Disclaimer These particulars, whilst believed to be accurate are set out as a general outline only for guidance and do not constitute any part of an offer or contract. Intending purchasers should not rely on them as statements of representation of fact, but must satisfy themselves by inspection or otherwise as to their accuracy. No person in this firm's employment has the authority to make or give any representation or warranty in respect of the property. All measurements and distances are approximate only. Your home is at risk if you do not keep up repayments on a mortgage or other loan secured on it.