



**OVER 60?**

Secure this property  
for up to **59% less!**

**Price**

**£500,000**

**Freehold**

3x  1x  1x 

**Parry Drive, Rustington,  
West Sussex, BN16**

**cubitt&west**  
Helping you move forwards





## Main features

- Sought after location close to seafront & village
- Shops, restaurants and amenities on your doorstep
- Potential to put your own stamp on (subject to planning)
- Good size hallway (currently arranged as a dining area)

## Accommodation

### GROUND FLOOR

Entrance Hallway

Lounge: 18'3 x 11'7 (5.57m x 3.53m)

Kitchen: 11'9 x 8'10 (3.58m x 2.69m)

Utility Room: 9'10 x 4'6 (3.00m x 1.37m)

Bedroom 1: 12'2 x 11'1 (3.71m x 3.38m)

Bedroom 2: 12'0 x 11'4 (3.66m x 3.46m)

Bedroom 3: 11'3 x 6'9 (3.43m x 2.06m)

### OUTSIDE

Front Garden

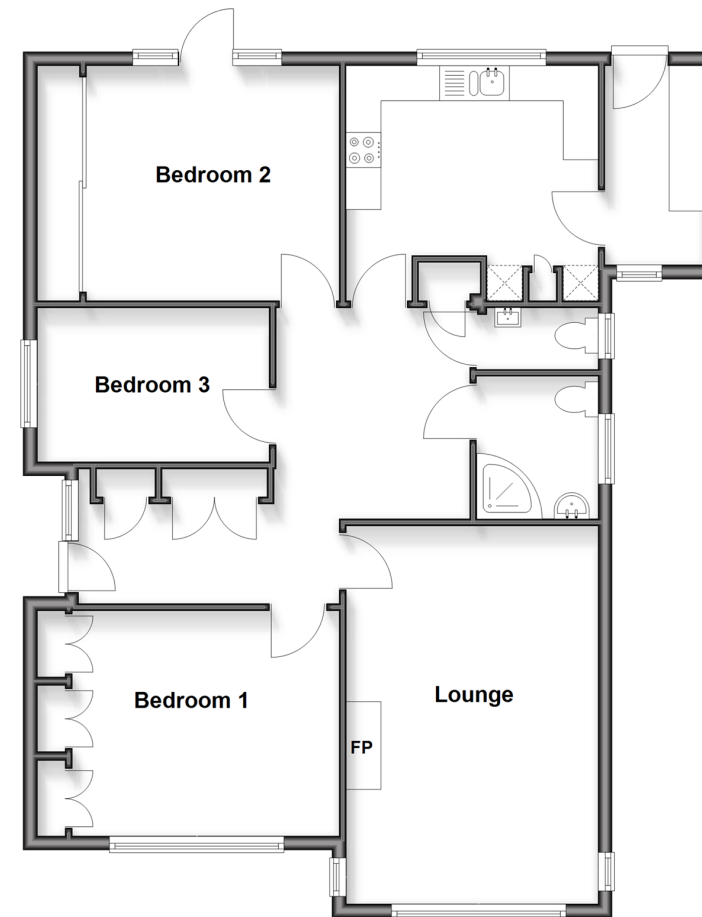
Rear Garden

Driveway

Garage

### Ground Floor

Approx. 94.7 sq. metres (1019.9 sq. feet)



**Call Rustington - 01903 775576 ■ [cubittandwest.co.uk](http://cubittandwest.co.uk)**

- Legal advice should be taken to verify fixtures/fittings, planning, alterations and/or lease details
- Appliances & services are untested, dimensions are approximate and floor plans are not to scale
- Through a Homewise Home For Life Plan people aged 60+ can secure this property for up to 50% less, by purchasing a Lifetime Lease



23708553/20251216/LFOG/LFOG