



Part of

Yeomanry Court, Market Harborough, LE16 9BL

ANDREW  
GRANGER & CO

**SHELDON  
BOSLEY**  
KNIGHT

LAND AND  
PROPERTY  
PROFESSIONALS



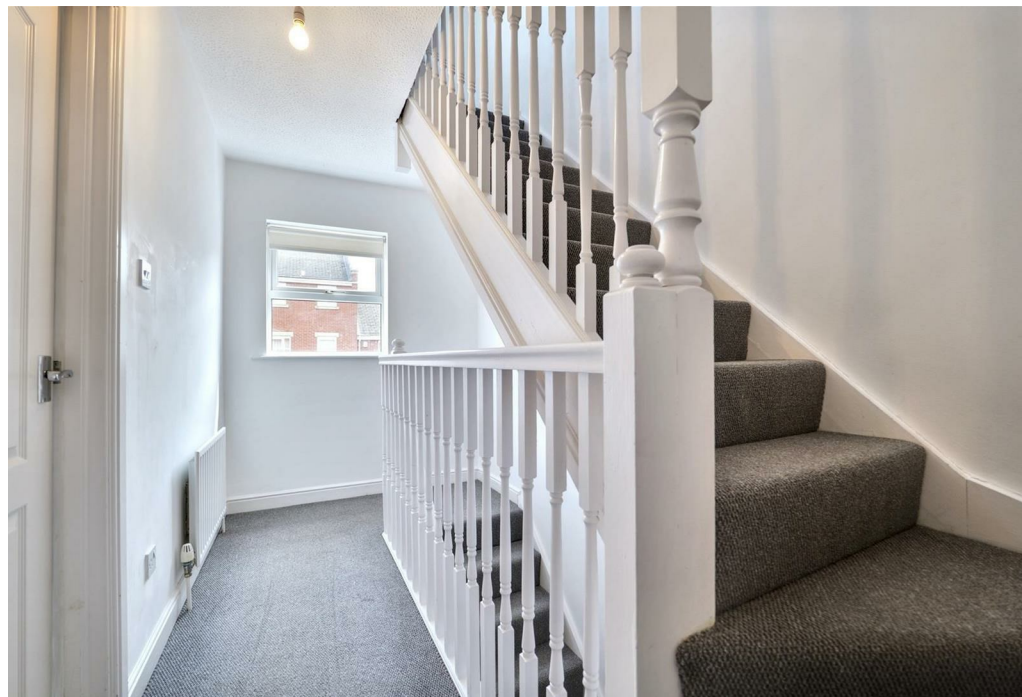
# Property Description

\*\*\*DEPOSIT ALTERNATIVE AVAILABLE\*\*\*

Welcome to this beautifully refurbished three bedroom terrace townhouse which benefits being close to the town centre. The ground floor features a welcoming entrance hall with a convenient WC and a large kitchen with fridge freezer and dishwasher. The living and dining area boasts elegant double doors that open up to a private garden. On the first floor, you will find a spacious and versatile lounge with balcony. There is also a generously sized double bedroom on this level with fitted wardrobes, offering flexibility as a guest room, office, or additional family bedroom. The second floor comprises another spacious double bedroom filled with ample natural light. The master bedroom is equipped an ensuite bathroom and fitted wardrobes and also the family bathroom is located on this floor. Additional features of this property include off road parking and a garage that also benefits from a freestanding fridge. The private garden offers a serene outdoor space perfect for family activities and relaxation. EPC C. Council Tax C. Rent £1,325pcm. Deposit £1,528. Available immediately on a fixed term six month contract with the option to renew.











## Key Features

- \*\*\*DEPOSIT ALTERNATIVE AVAILABLE\*\*\*
- Garden
- Kitchen with dishwasher and fridge
- Master bedroom with fitted wardrobes and en suite
- Three double rooms, one with fitted wardrobes
- Family bathroom
- Garage and off road parking for one car
- EPC C. Council Tax C
- Rent £1,325pcm. Deposit £1,528
- Available immediately on a fixed term six month contract with the option to renew

**£1,325 PCM**