

The Churchills logo is displayed in a stylized, red font with a white outline and a drop shadow, set against a blue background.

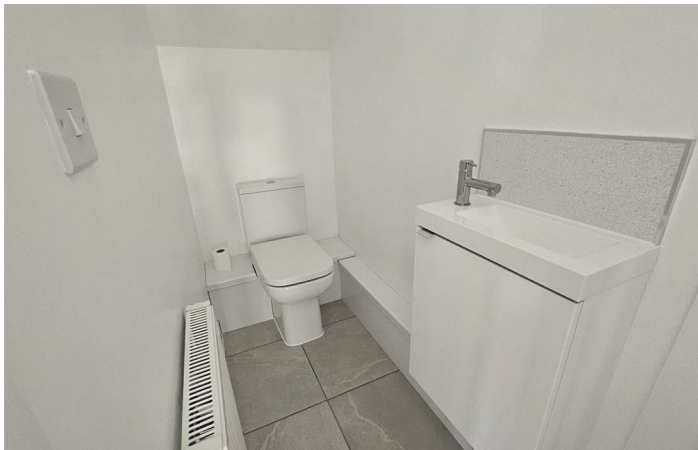
Princess Road

Mexborough, Doncaster S64 0AW

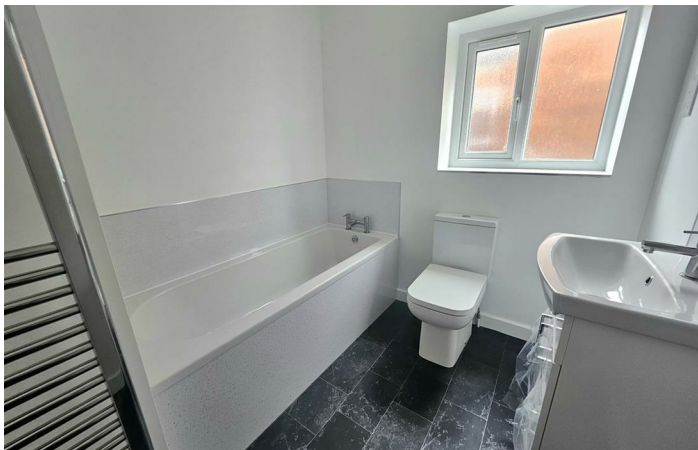
- NEWLY BUILT
- LOUNGE & DINING
- DOWNSTAIRS WC
- MODERN KITCHEN
- EPC RATING B
- THREE BED SEMI-DETACHED
- TWO BATHROOMS
- SPACIOUS LIVING
- OFF ROAD PARKING

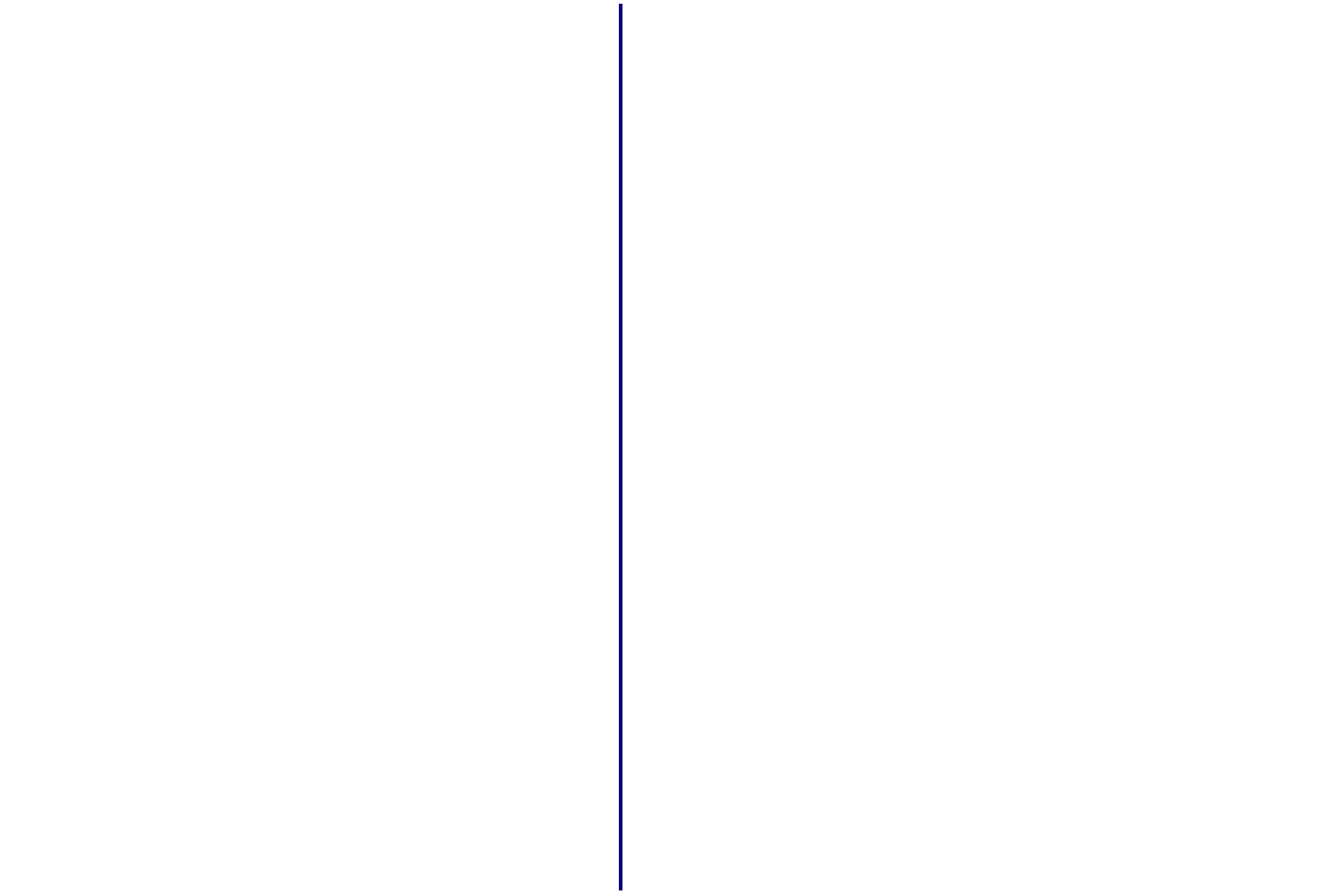
£995 Per Calendar Month





Location





Local Authority DONCASTER
Council Tax Band New Build
EPC Rating B



Churchills Lettings Office

16 High Street, Mexborough, South
Yorkshire, S64 9AS

Contact

01709 582880
Info@churchillsestateagents.com
www.churchillsestateagents.com

Agents Note: Whilst every care has been taken to prepare these particulars, they are for guidance purposes only. All measurements are approximate and for general guidance purposes only and whilst every care has been taken to ensure accuracy, they should not be relied upon and potential buyers/tenants are advised to recheck the measurements.