



## Jardine Road, E1W

£530 Per week

A spacious two bedroom property in the popular Atlantic Wharf development. The property has a separate kitchen, rear patio and a day porter.

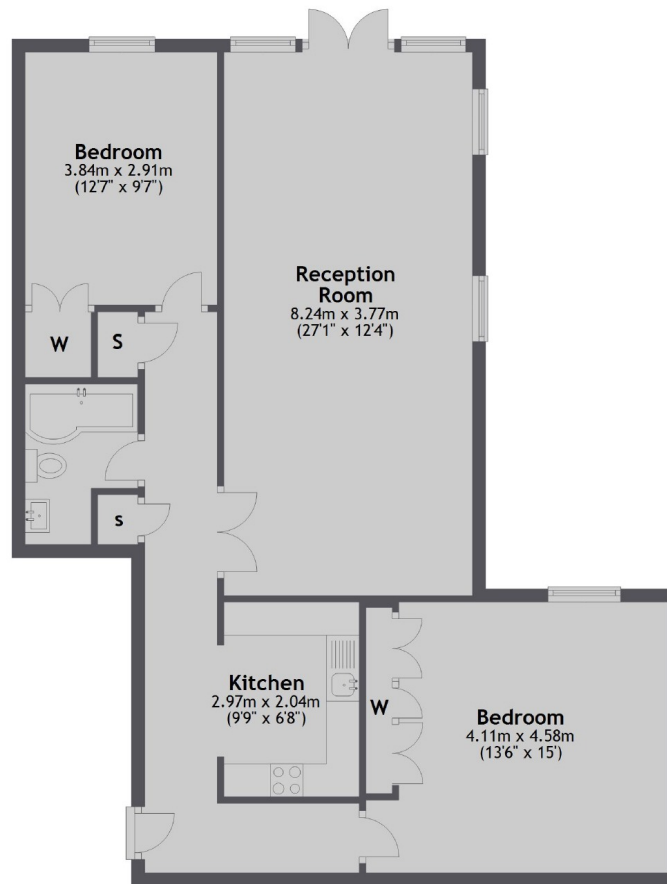
Mauretania Building is in the heart of Wapping, moments from an array of shops, bars and restaurants including the popular Il Bordello.

### Features

- Two Bedrooms
- One Bathroom
- Patio
- Separate Kitchen
- Day Porter
- Parking

# Jardine Road, London, E1W

## Ground Floor



Total area: approx. 87.6 sq. metres (942.7 sq. feet)