



Nottingham Place, W1U

£7,041 Per calendar month

Dexters



Nottingham Place, W1U

A first floor lateral apartment in the heart of Marylebone Village, with outside space.

The flat has been tastefully finished with modern fixtures throughout, and is offered on a furnished basis.

There is a good sized reception room leading through to the kitchen with breakfast bar. The reception has high ceilings and sash windows providing lots of light and access to a private balcony. The bedroom is a double room with wood flooring and built-in storage and there is a bathroom off the hallway.

The open spaces of Regent's Park and Paddington Street Gardens are nearby and there are plenty of transport links from Baker Street, Marylebone, Bond Street and Great Portland Street stations.

The vibrant shops, bars, cafes and restaurants of Marylebone High Street are virtually on your doorstep. Portman Village is also home to a number of independent shops and is only a short walk away.

Features

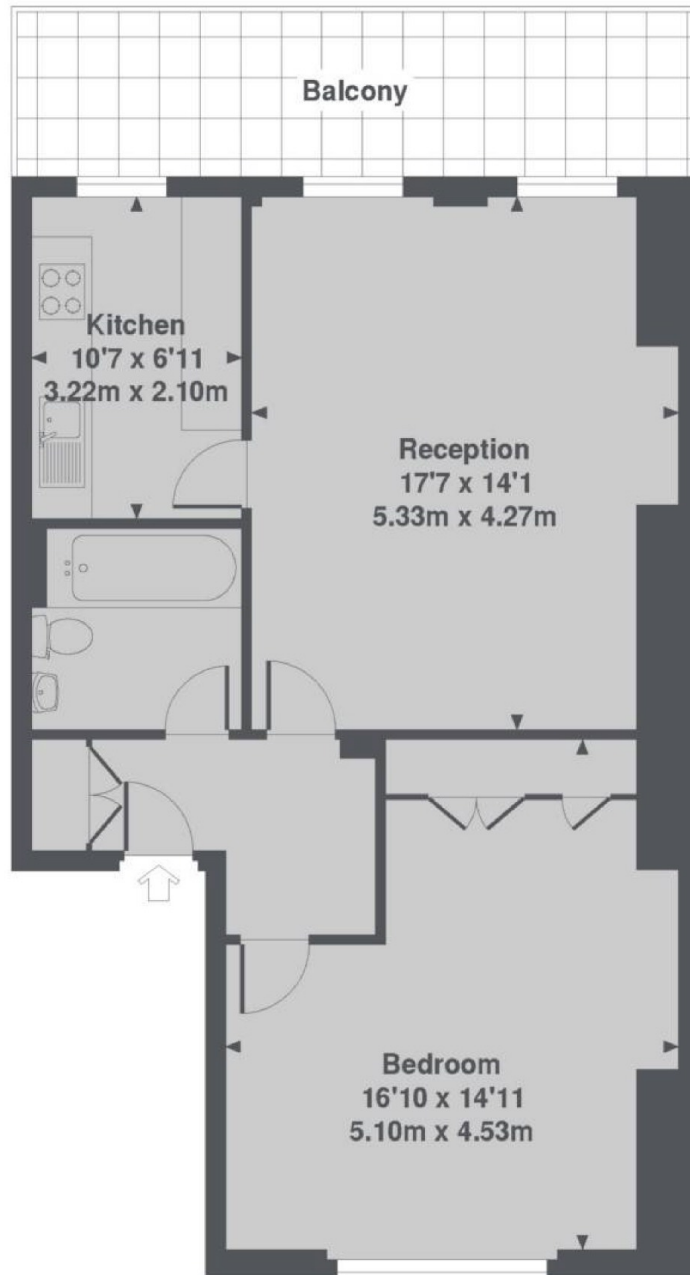
- Marylebone Village
- First Floor Apartment
- One Bedroom
- One Bathroom
- Balcony
- Furnished







Nottingham Place, London, W1U



Nottingham Place, W1U
Total Approx. Floor area 654 Sq. Ft. (60.8 Sq. M.)