

# Woodhurst Road

Maidenhead • Berkshire • SL6 8TF

Asking Price: £1,695,000



coopers  
est 1986

# Woodhurst Road

Maidenhead • Berkshire • SL6 8TF

Stunning five bedroom modern Detached home, set on a Private plot of over 0.25 acres and complemented by a Detached Two storey Garage, nestled in Maidenhead's highly sought after Riverside.

Quiet Riverside location

- Total Approx. Over 3,356 sq ft, Standing on a Private Plot over 0.25 acres

Remaining 6 1/2 years New-Build Warranty

- Open Plan Kitchen/ Dining Room with Separate Utility Space

No onwards Chain

Five Double Bedrooms

Two Bedrooms with Access to Shared Balcony

South West Facing Garden

Detached Garage with space for 2 cars & EV Charger

Expansive Horseshoe Driveway

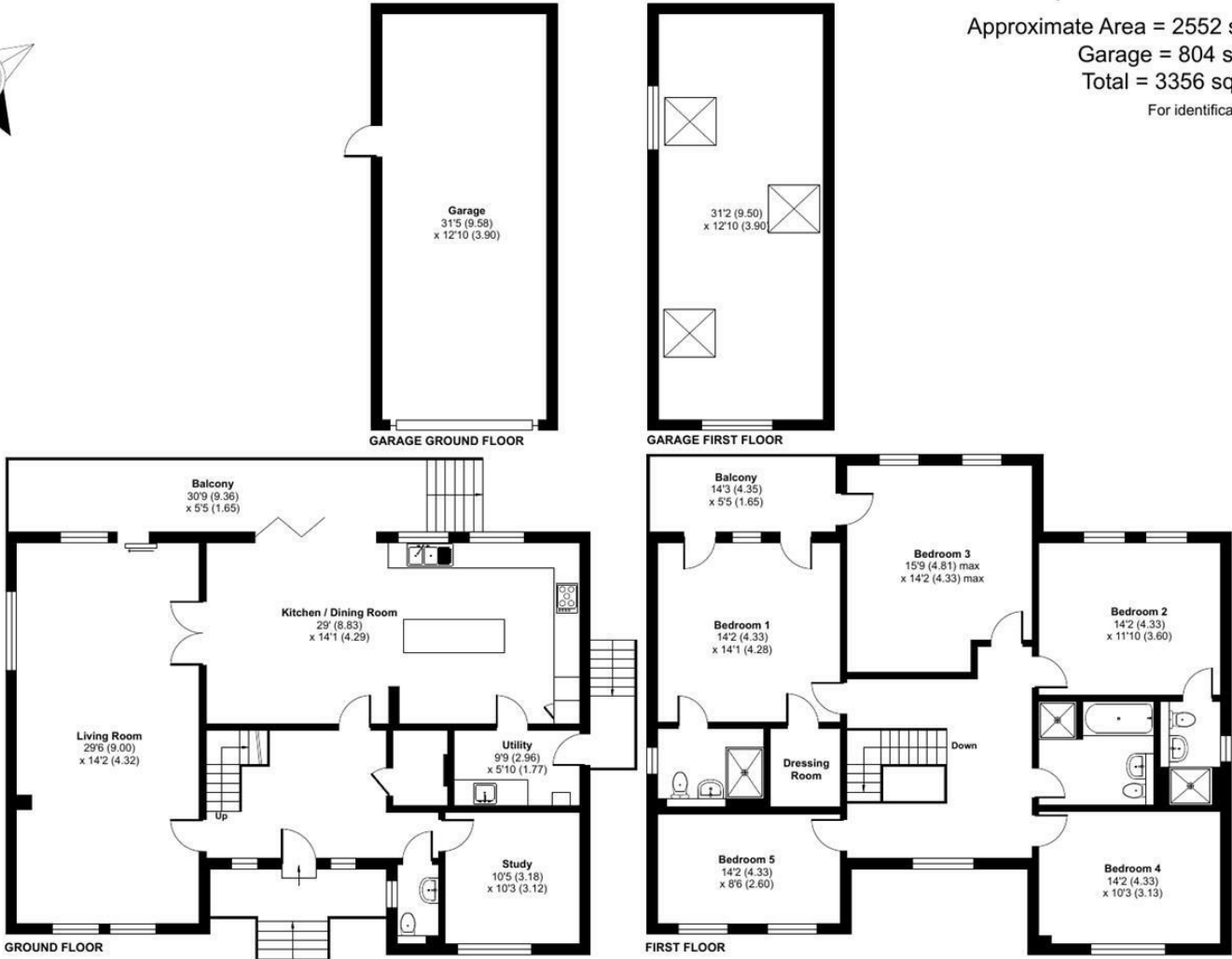
These particulars are intended as a guide and must not be relied upon as statements of fact. Your attention is drawn to the Important Notice on the last page.





# Woodhurst Road, Maidenhead, SL6

Approximate Area = 2552 sq ft / 237 sq m  
 Garage = 804 sq ft / 74.6 sq m  
 Total = 3356 sq ft / 311.6 sq m  
 For identification only - Not to scale

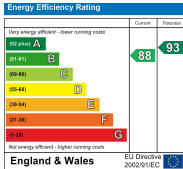


Floor plan produced in accordance with RICS Property Measurement 2nd Edition, Incorporating International Property Measurement Standards (IPMS2 Residential). © n/checom 2025. Produced for Coopers. REF: 1343442



42 Queen Street, Maidenhead,  
 SL6 1HZ  
 maidenhead@coopersresidential.co.uk

CoopersResidential.co.uk



Important Notice: These particulars, whilst believed to be accurate are set out as a general outline only for guidance and do not constitute any part of an offer or contract. Intending purchasers should not rely on them as statements or representation of fact, but must satisfy themselves by inspection or otherwise has the authority to make or give any representation or warranty in respect of the property.