



1 Bedroom | 1 Bathroom | 1 Reception Room

October House | Birdhurst Rise | South Croydon | CR2 7ED

Guide price £225,000

LOFT

October House | Birdhurst Rise |
South Croydon | CR2 7ED
Guide price £225,000

- Chain free ground floor converted apartment
- Direct access to communal gardens
- Full of character throughout with high ceilings and large windows
- Larger than average double bedroom
- Separate kitchen and lounge
- Spacious storage cupboard
- 0.3 miles from South Croydon train station and ideally located for amenities
- *Some photos have been virtually staged and are for marketing purposes only*

Ground Floor

Hallway

Large Storage Cupboard

Reception Room

12'7 x 12'6 (3.84m x 3.81m)

Kitchen

10'5 x 6'4 (3.18m x 1.93m)

Bathroom

Bedroom

17'1 x 13'9 (5.21m x 4.19m)

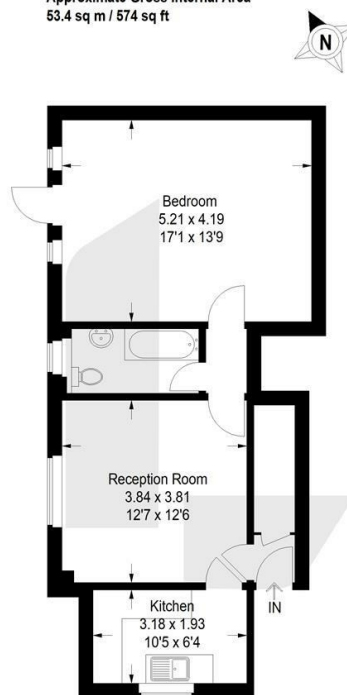
Outside

Direct Access to Communal Gardens

Off Road Parking

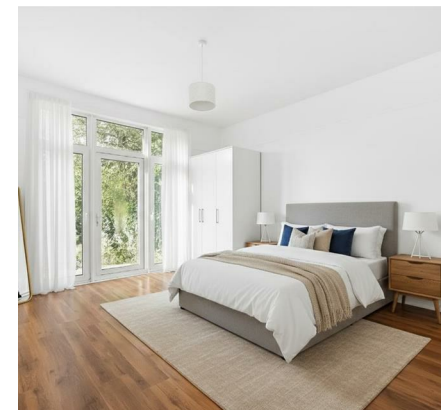


October House, CR2
Approximate Gross Internal Area
53.4 sq m / 574 sq ft



Ground Floor

This plan is for layout guidance only. Not drawn to scale unless stated. Windows and door openings are approximate. Whilst every care is taken in the preparation of this plan, please check all dimensions, shapes and compass bearings before making any decisions reliant upon them. (ID1171020)



23a High Street
Purley
Surrey
CR8 2AF
0208 660 8070
hello@loft-estates.co.uk