



FLOYD ROAD, SE7

£325,000

Flat
One bedroom
Private Garden
Chain free
Share of freehold
Energy rating: d

@marshandparsons
marshandparsons.co.uk

MARSH &
PARSONS



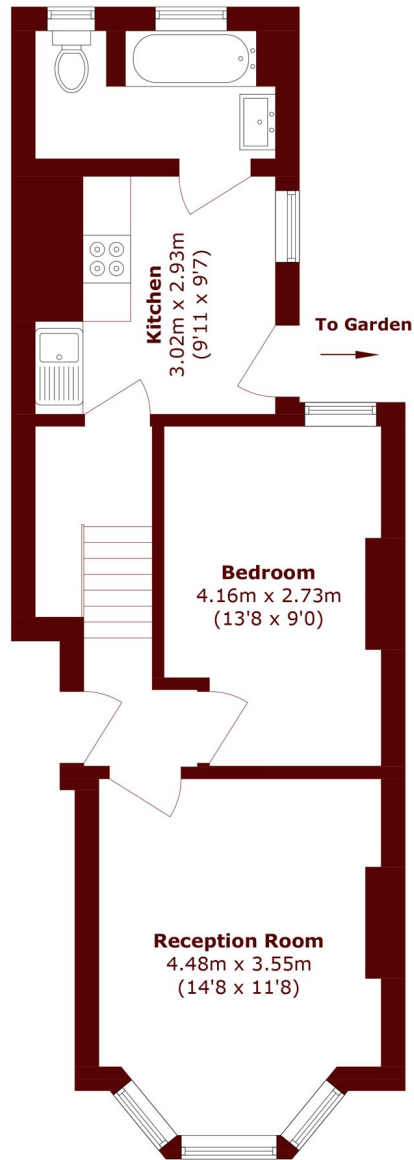
ABOUT THE PROPERTY

This spacious one bedroom conversion garden flat. Fully renovated throughout, the property is offered chain free and comes with a share of the freehold. The flat benefits from double-glazed windows throughout, a large reception room, a generous double bedroom, a brand new fitted kitchen, and a modern three-piece bathroom. Outside, there is a large private garden, providing excellent outdoor space for relaxing or entertaining.

A short walk from Charlton station with frequent rail service, plus buses to North Greenwich, Blackheath, and Greenwich. Large Sainsbury's, Marks & Spencer, and retail park shops are nearby.



STEP INSIDE FLOYD ROAD



Total area (approx.): 47.5 sq. m (511.2 sq. ft)

Charlton
020 8293 0454

Energy Rating: D We aim to make our particulars both accurate and reliable. However, they are not guaranteed; nor do they form part of an offer or contract. If you require clarification on any points then please contact us, especially if you're traveling some distance to view. Please note that appliances and heating systems have not been tested and therefore no warranties can be given as to their good working order

**MARSH &
PARSONS**