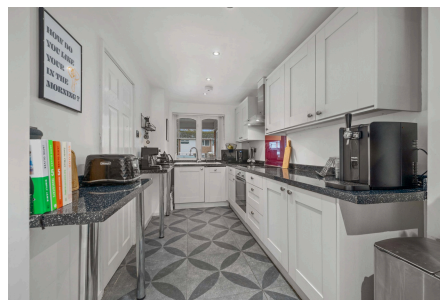
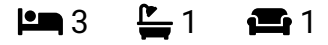


## Banbrook Close, Solihull, B92 9NF

Offers In Region Of £300,000



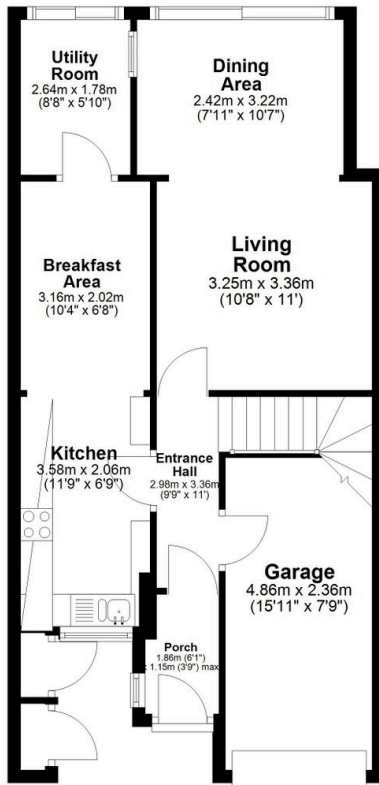
Viewings recommended for this lovely presented three bedroom Mid Terraced property situated on Banbrook Close, B92.

## Key Features

- Three Bedroom Semi Detached Home
- Garage to Front
- Popular Location
- Utility Room
- Extended Accommodation
- Off Road Parking
- Living Room with Separate Dining Room
- No Upward Chain

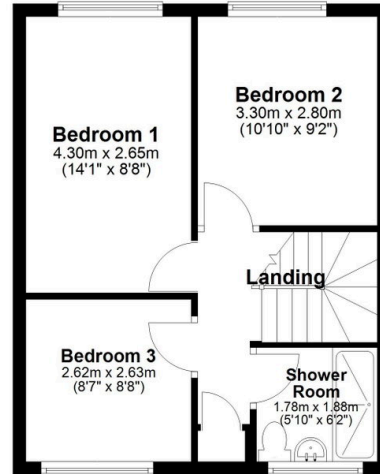
### Ground Floor

Approx. 59.2 sq. metres (636.9 sq. feet)



### First Floor

Approx. 38.8 sq. metres (417.3 sq. feet)



Total area: approx. 97.9 sq. metres (1054.2 sq. feet)