

Elsham Road, W14

£461 Per week

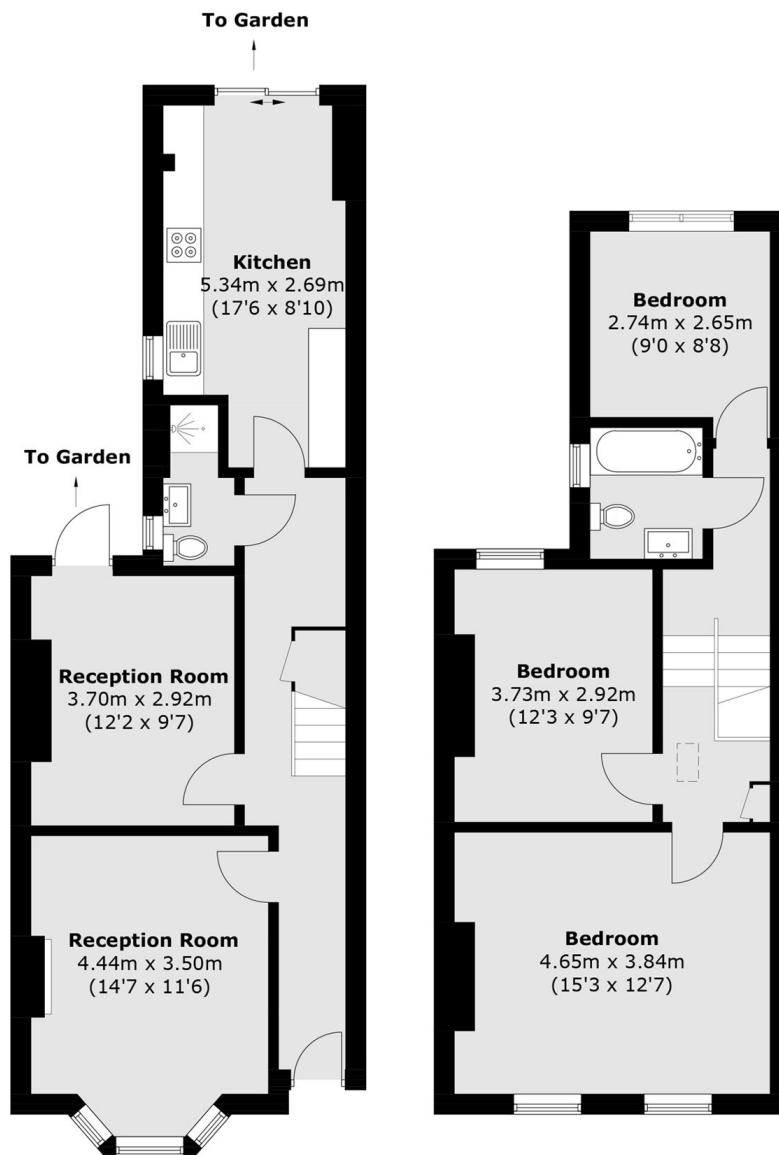
This one bedroom flat is on a quiet residential street, just off Holland Road. Refurbished throughout, the flat also has an access to a private courtyard.

Elsham Road is just over a quarter of a mile from Shepherd's Bush Underground Station (Central Line), Shepherd's Bush Mainline Station (Overground & Southern Rail) and Westfield Shopping Centre.

Features

- Victorian Conversion
- One Double Bedroom
- Semi- Open Plan Kitchen
- Wood Flooring
- Fitted Wardrobes
- Prime Location

Elsham Road,
London, W14



Ground Floor

First Floor

Total area (approx.): 104.4 sq. m (1,123.8 sq. ft)

Dexters

Shepherds Bush and Brook Green
53 Shepherds Bush Green
London
W12 8PS
Lettings
020 8723 8899

Energy Rating: C. We aim to make our particulars both accurate and reliable. However they are not guaranteed; nor do they form part of an offer or contract. If you require clarification on any points then please contact us, especially if you're traveling some distance to view. Please note that appliances and heating systems have not been tested and therefore no warranties can be given as to their good working order.

 **RICS** | Regulated
Estate Agent
and Letting Agent

[dexters.co.uk](https://www.dexters.co.uk)