



69 Oakham Close, Toothill
Swindon

£210,000

roffarlane

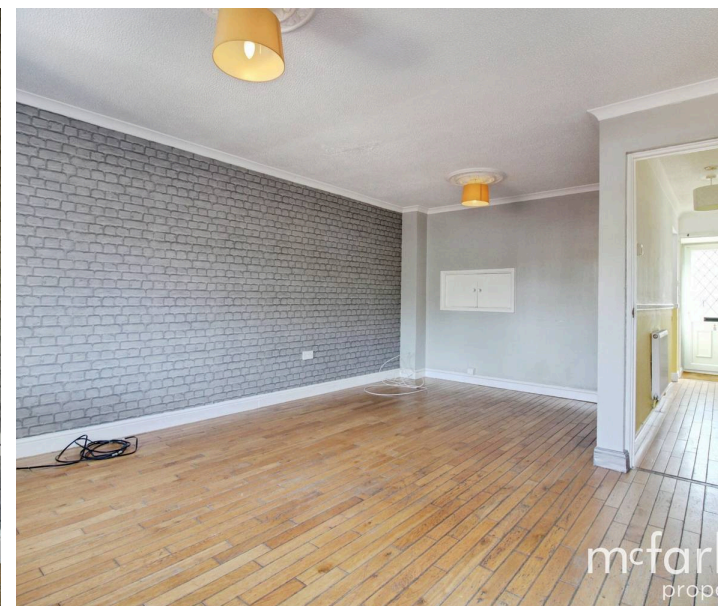
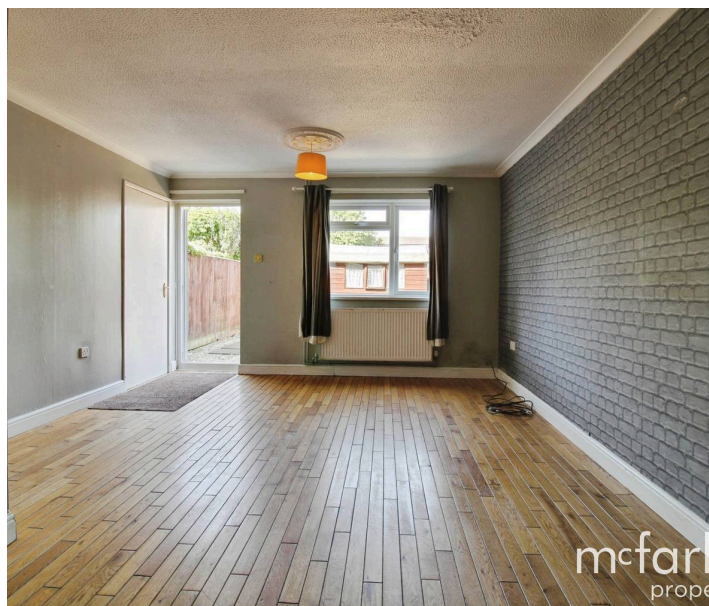
69 Oakham Close

Toothill, Swindon, SN5

Set within the residential area of Toothill, this mid-terrace family home offers a fantastic opportunity for a range of buyers. Ideally positioned, the property enjoys easy access to local shops and everyday amenities, as well as excellent transport links to Swindon Town Centre and Junction 16 of the M4 motorway. The ground floor welcomes you with a spacious entrance hall leading through to the generous lounge/dining room, perfect for both relaxing and entertaining guests. A well proportioned contemporary kitchen completes the downstairs layout, offering a practical and functional space for everyday living.

Upstairs, the property continues to impress with three comfortable bedrooms and a family bathroom, providing ample space for a growing family or those needing additional room to work from home.

Externally, the home benefits from both front and rear gardens, along with the added convenience of off road parking.





69 Oakham Close

Toothill, Swindon, SN5

Located in Toothill, this three bedroom mid-terrace home offers a spacious lounge/diner, modern kitchen, family bathroom, and front/rear gardens with off-road parking. Well placed for local amenities, Swindon town center and M4 links, ideal for families or first-time buyers. Council Tax band: B

Tenure: Freehold

EPC Energy Efficiency Rating: C

EPC Environmental Impact Rating: C

mcfarlane
property.com



mcfarlane
prop

mcfarlane
property

69 Oakham Close

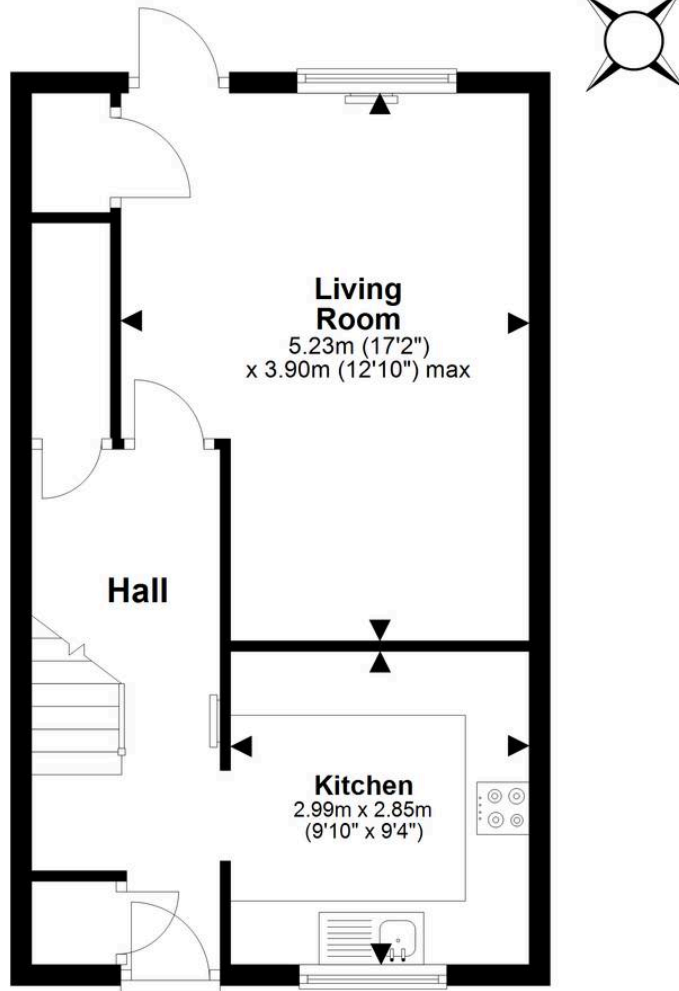
Toothill, Swindon, SN5

- NO ONWARDS CHAIN
- THREE BEDROOMS
- OPEN PLAN LIVING & DINING
- LOW MAINTENANCE REAR GARDEN
- POPULAR SN5 LOCATION



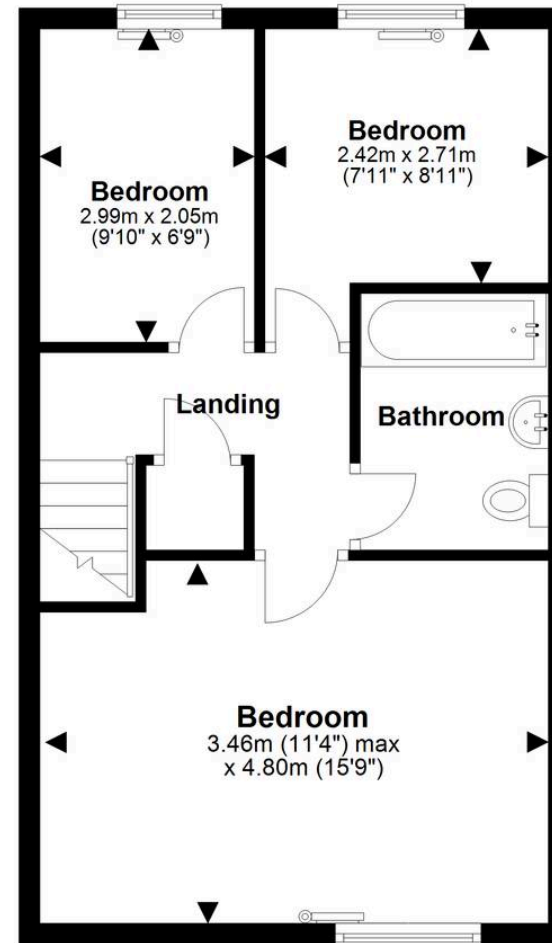
Ground Floor

Approx. 39.5 sq. metres (425.6 sq. feet)



First Floor

Approx. 40.3 sq. metres (433.4 sq. feet)



69 Oakham Close, SWINDON

McFarlane Sales & Lettings

McFarlane Sales & Letting Ltd, 28-30 Wood Street - SN1 4AB

01793 296880 • oldtown@mcfarlaneproperty.com • www.mcfarlaneproperty.com/

mcfarlane
property.com