



South Road, Bourne
£280,000 **Freehold**

**QUENTIN
MARKS**



Key Features



- Detached Bungalow
- 2 Double Bedrooms
- Bathroom
- Kitchen
- Utility Room / Rear Porch

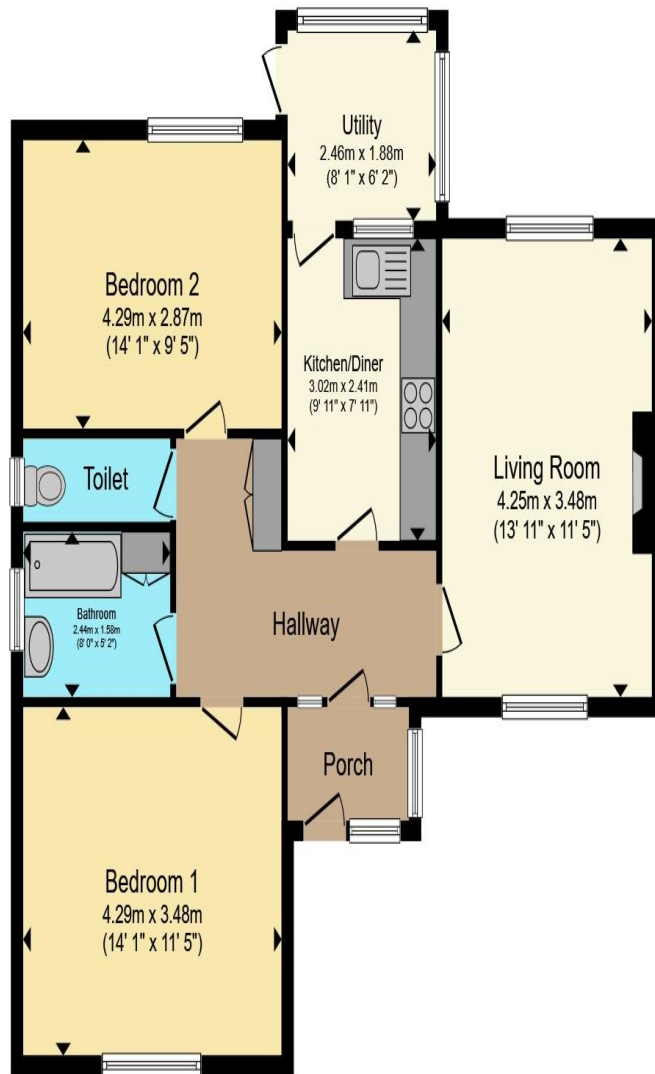
This detached bungalow is conveniently located with easy access to local shopping amenities, transport links, and Bourne town centre.

The property occupies an attractive plot of approximately one-fifth of an acre. To the front, there is a driveway providing off-road parking for three to four vehicles, along with access to a garage.

The bungalow is entered via an entrance porch leading into a welcoming hallway, which includes a built-in coat cupboard. The lounge extends from the front to the rear of the property and benefits from uPVC double-glazed windows at both aspects, two radiators, and a living flame-effect gas fire set within a feature fireplace.

The kitchen is fitted with a range of base units, drawers, and work surfaces, complemented by wall-mounted cupboards and a useful broom cupboard. A uPVC double-glazed door leads into the rear





Ground Floor

Total floor area 75.2 sq.m. (809 sq.ft.) approx

This floor plan is for illustrative purposes only. It is not drawn to scale. Any measurements, floor areas (including any total floor area), openings and orientation are approximate. No details are guaranteed, they cannot be relied upon for any purpose and they do not form part of any agreement. No liability is taken for any error, omission or misstatement. A party must rely upon its own inspection(s). Powered by www.PropertyBox.io



porch/utility room, constructed of brick and uPVC double glazing. This space houses the Glow-worm gas-fired central heating boiler and provides plumbing for a washing machine, with a further door giving access to the rear garden.

There are two double bedrooms, both of similar proportions, offering flexibility in their use. The larger bedroom is positioned at the front, while the second is located at the rear.

The bathroom is fitted with a wash hand basin and a bath with an independent Mira shower over, along with a heated towel rail and an airing cupboard. The WC is located separately.

Externally, the front garden is set behind a dwarf brick wall and is laid with flower and shrub beds. The driveway leads to a garage (5.04m x 2.73m), which was re-roofed in 2022 and features an up-and-over door, power, lighting, and a personal side access door. To the rear of the garage are two brick-built stores, each with independent external access.

The rear garden is arranged over two levels, with an upper section comprising a patio area leading to a lawn with specimen trees and shrubs, and a lower lawned area with well-stocked borders.

The property is offered for sale with no onward chain.

To view this property call Quentin Marks on:
01778 391600

Selling your property?

Contact us to arrange a **FREE** home valuation.

 01778 391600

 2 West Street, Bourne, Lincs, PE10 9NE

 sales@quentinmarks.co.uk

 www.quentinmarks.co.uk



SCAN FOR MORE
INFORMATION



Sharman Quinney Holdings Limited is registered in England and Wales under company number 4174227, Registered Office is Cumbria House, 16-20 Hockliffe Street, Leighton Buzzard, Bedfordshire, LU7 1GN. VAT Registration Number is 500 2481 05.

1: These particulars do not constitute part or all of an offer or contract. 2: The measurements indicated are supplied for guidance only and as such must be considered incorrect. 3: Potential buyers are advised to recheck the measurements before committing to any expense. 4: Sharman Quinney has not tested any apparatus, equipment, fixtures, fittings or services and it is the buyers interests to check the working condition of any appliances. 5: Sharman Quinney has not sought to verify the legal title of the property and buyers must obtain verification from their legal representative. 6: Intending purchasers will be asked to produce identification documentation at a later stage and we would ask your co-operation in order that there will be no delay in agreeing the sale. Ref: SQB100633 - 0005