



Cleaveland Road, KT6

£500,000

A unique and immaculately presented home nestled behind stable doors. This one of a kind property is full of character and thought to be the old stables for the workman's cottages built in the mid 1800's. Amongst the thriving flat market in Surbiton, this home offers the opportunity to secure a freehold house instead, free of service charges or ground rent costs and ideally located on a prime river Road.

Cleaveland Road is one of Surbiton's premier river roads with everything you need on your doorstep, including the River Thames, the desirable Maple Road, Surbiton's popular high street and the mainline train station with it's fast links into London.

Features

- Freehold House
- One Double Bedroom
- Immaculately Presented
- Courtyard
- River Road Location
- Juliet Balcony



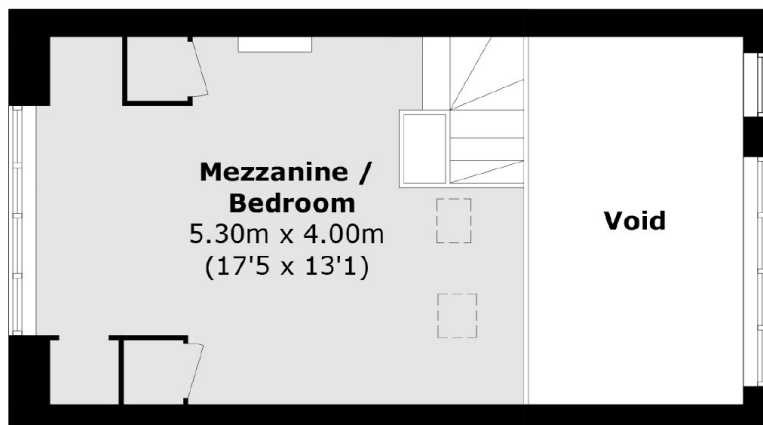
Cleaveland Road, KT6

Upon entering through the stable doors there is a partly covered courtyard perfect for hosting, exercising or relaxing. There is also a large storage cupboard which doubles up as a utility cupboard.

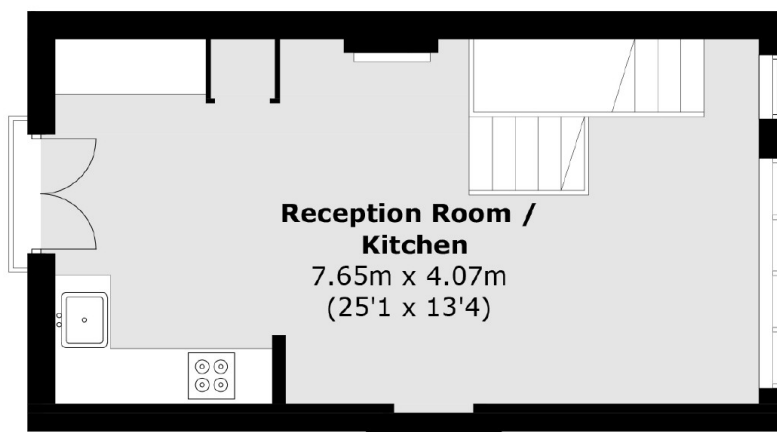
On the ground floor there is a smart and contemporary bathroom suite. On the first floor there is an open plan modern kitchen/reception room, with exposed brick walls, log burner and Juliet Balcony. Upstairs on the second floor there is a dual aspect double bedroom with exposed beams and ample storage.



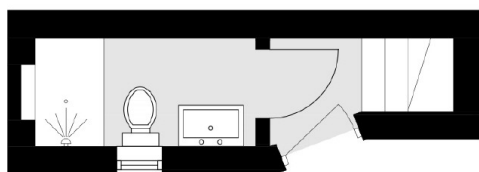
Cleaveland Road, Surbiton, KT6



Mezzanine



First Floor



Ground Floor

Total area (approx.): 56.7 sq. m (610.3 sq. ft)
(Including Mezzanine / Excluding Void)