



Jackie Quinn
estate agents

14 Greville Court Greville Park Road, Ashted

Guide Price **£190,000**

OVER 55s RETIREMENT PROPERTY. Newly decorated throughout, with attractive views over the beautifully maintained communal grounds, this sought after two bedroom, first floor apartment for the over 55's is situated in the heart of Ashtead Village. The property benefits from a bright and spacious lounge, kitchen and bathroom. A house manager is available on site from Monday to Friday between 9am and 5pm, and there is a communal lounge, laundry and guest suite, together with ample parking for both residents and visitors.

Ashtead Village and Craddocks Parade in Lower Ashtead offer an excellent range of independent village shops together with high street favourites including an M&S Foodhall. Local amenities include the village library and two doctor's surgeries. A wide range of recreational pursuits are also close by including Ashtead Squash and Tennis Club and Ashtead Cricket and Bowls Club. For those with a love of the outdoors Ashtead Common and nearby countryside offer miles of glorious open landscape, ideal for walking enthusiasts.

Transport links are excellent, via road, rail or bus. Ashtead train station provides frequent services to Waterloo, Victoria and London Bridge in approximately 35/40 minutes. Several bus routes operate locally with bus stops within easy reach of the apartment. Junction 9 of the M25 is approximately five minutes away and offers easy access to both London Gatwick and Heathrow airports in around 25/30 minutes.

There is no onward chain associated with the sale of this property.

Leasehold

Lease : 60 years remaining

Service Charge : £2,628 payable twice yearly (£5,256 per annum)

Ground Rent : £313.20 payable twice yearly (£626.40 per annum)

Council Tax band: D

Tenure: Leasehold

EPC Energy Efficiency Rating: C

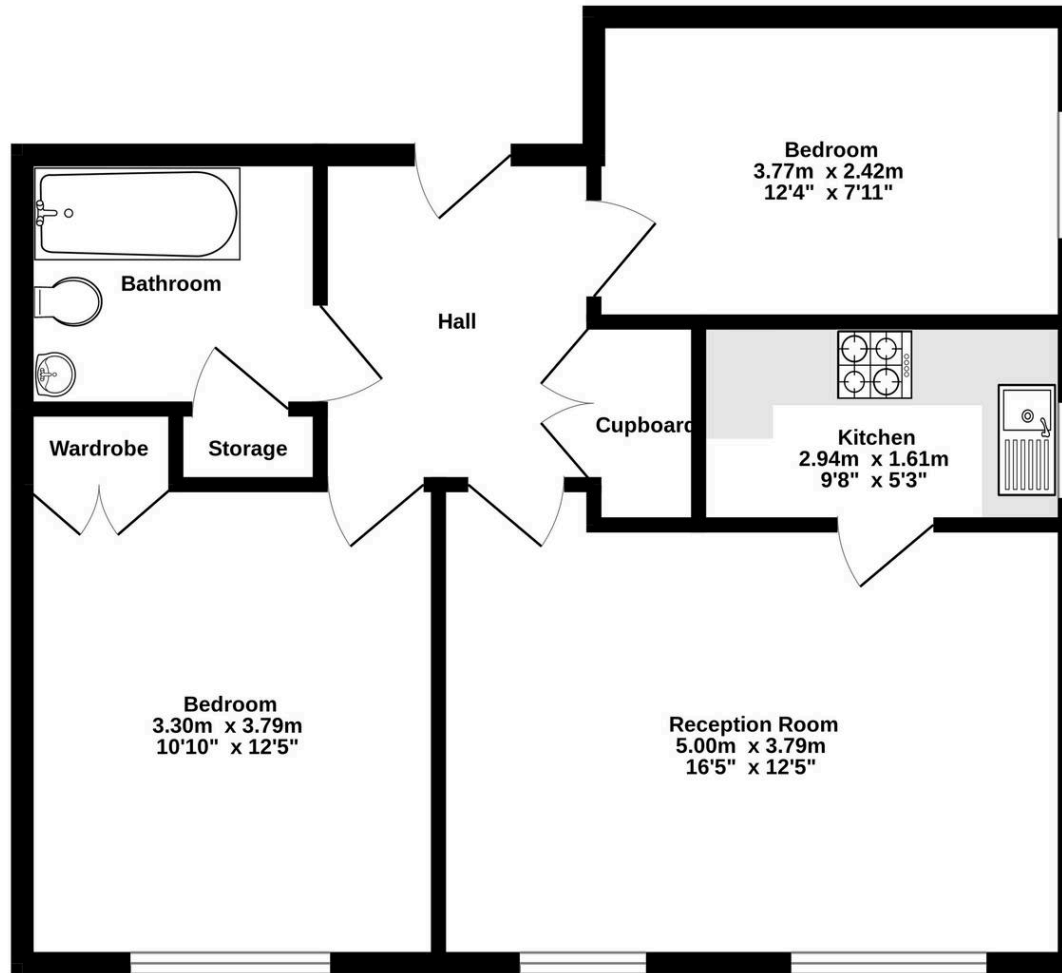
EPC Environmental Impact Rating: D

- Large windows
- Ample natural light
- Landscaped communal gardens
- Outdoor seating area





1st Floor
61.4 sq.m. (661 sq.ft.) approx.



TOTAL FLOOR AREA: 61.4 sq.m. (661 sq.ft.) approx.

Whilst every attempt has been made to ensure the accuracy of the floorplan contained here, measurements of doors, windows, rooms and any other items are approximate and no responsibility is taken for any error, omission or mis-statement. This plan is for illustrative purposes only and should be used as such by any prospective purchaser. The services, systems and appliances shown have not been tested and no guarantee as to their operability or efficiency can be given.
Made with Metropix ©2025





Jackie Quinn Estate Agents

71 The Street, Ashted - KT21 1AA

01372 271504 • ashted@jackiequinn.co.uk • www.jackiequinn.co.uk/

Jackie Quinn Estate Agents Ltd. Company number 3043609



You can include any text here. The text can be modified upon generating your brochure.

See more of the properties we have for sale on our website

jackiequinn.co.uk

and on Zoopla, On The Market and Rightmove

A member of



Jackie Quinn
estate agents