



Deansfield, Cricklade – SN6 6BW
Wiltshire

In Excess of **£410,000**
mcfarlane
property.com

Deansfield

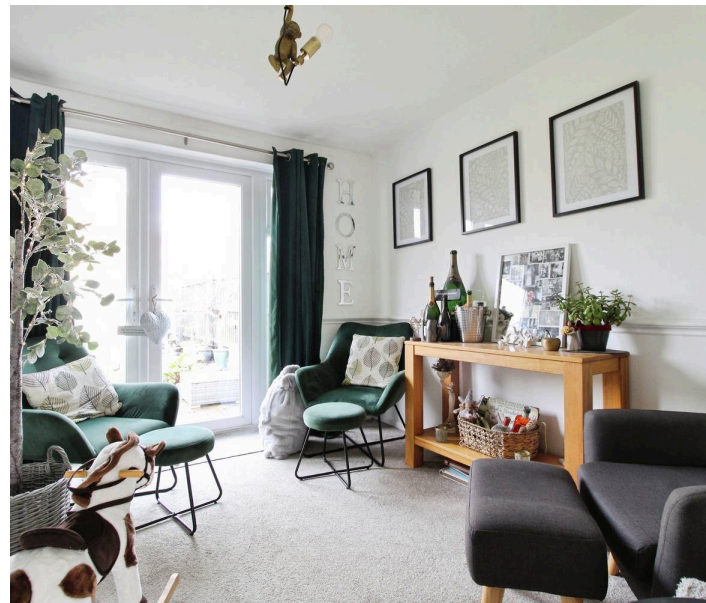
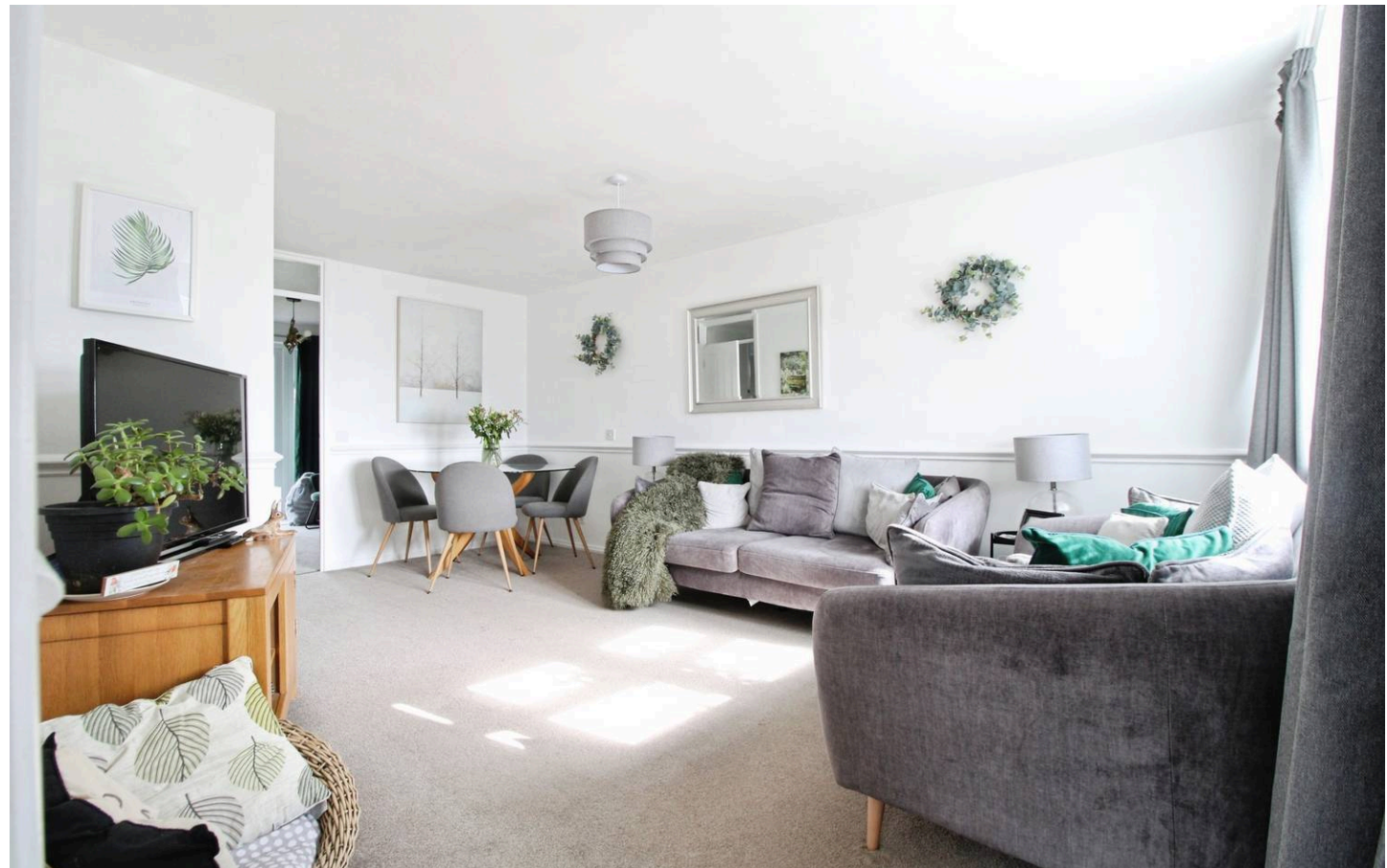
Cricklade, Wiltshire

- Flexible Accommodation over TWO Floors
- FOUR Bedrooms
- Generous and Enclosed Rear gardens
- Sought After Location
- Stunning Detached Family Home
- Modernised and Well Presented
- Bright and Airy Accommodation
- Driveway and Garage

A well presented and proportioned FOUR Bedroom family home located within the sought after residential development of Deansfield.

This stunning example is beautifully presented with flexible accommodation with a bright and airy feel throughout.

Deansfield is ideally placed for the abundance of amenities that Cricklade and its bustling High Street have to offer. Cricklade is ideally positioned between the larger market town of Cirencester (the capital of the cotswold's) and Swindon via the A419.



Deansfield

Cricklade, Wiltshire

Cricklade is a historic former market town in North Wiltshire and Ideally placed for the neighbouring A419. Cricklade is also known as the first town on the Thames and boasts a bustling high street with a variety of amenities. The nationally renowned North Water Meadow is close by with the snake headed fritillaries that bloom annually. This has been classified as a SSSI & NNR (Site of Special Scientific Interest & National Nature reserve).

Council Tax band: C

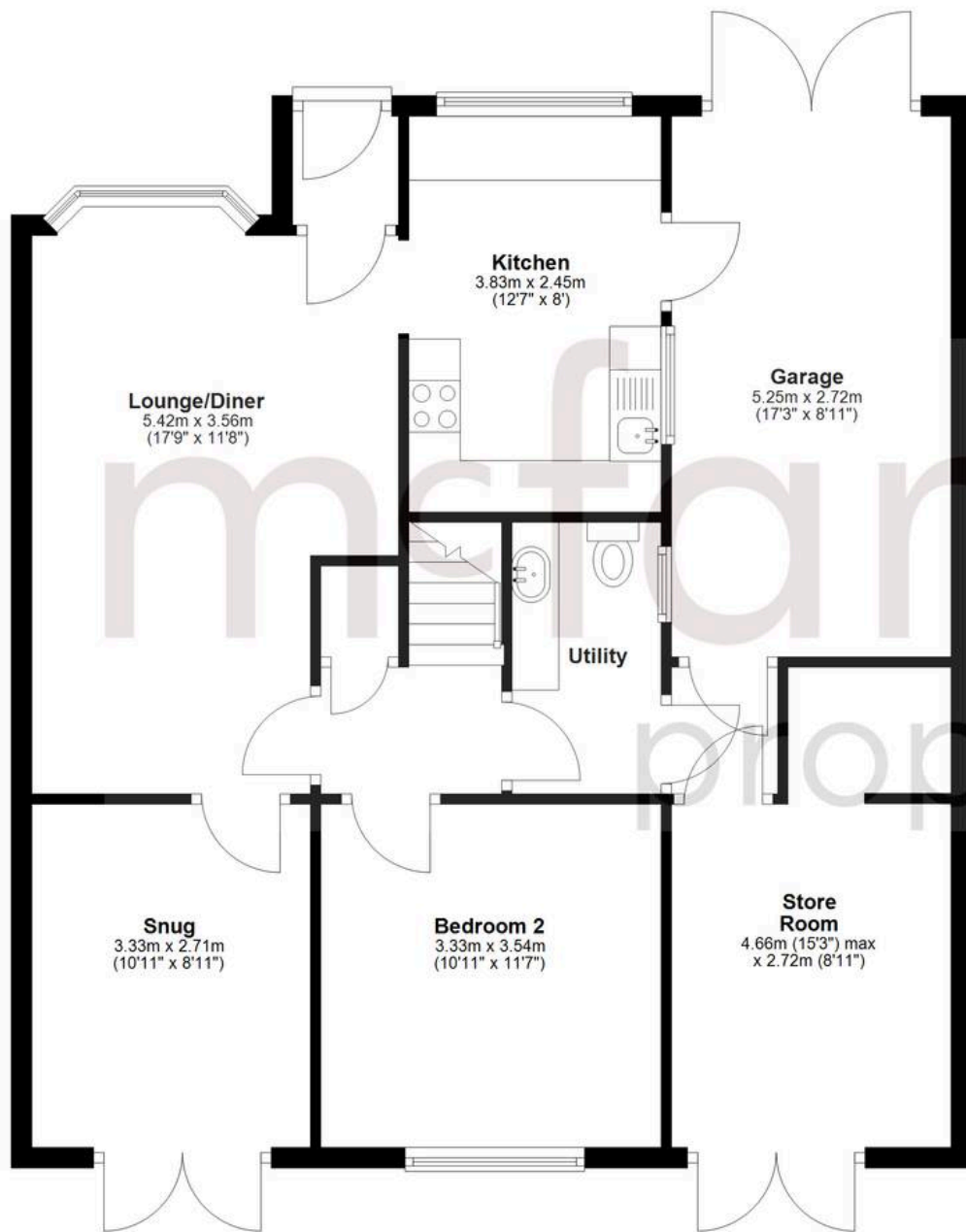
Tenure: Freehold



mcfarlane
property.com

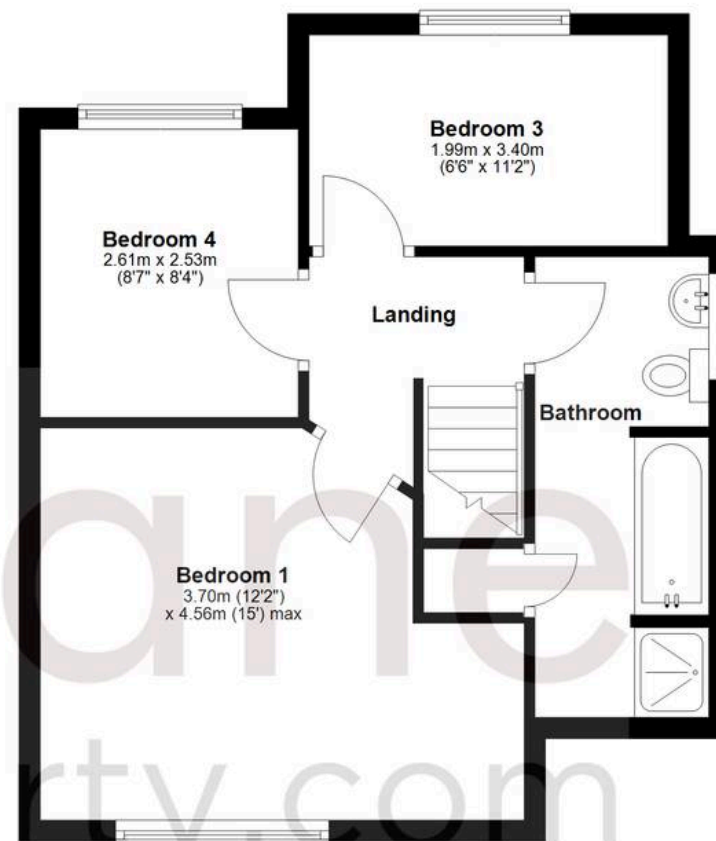
Ground Floor

Approx. 87.3 sq. metres (940.0 sq. feet)



First Floor

Approx. 41.1 sq. metres (442.4 sq. feet)



Total area: approx. 128.4 sq. metres (1382.4 sq. feet)

Agents Note: Whilst every care has been taken to prepare these sales particulars, they are for guidance purposes only. All measurements are approximate and for general guidance purposes only and whilst every care has been taken to ensure their accuracy, they should not be relied upon and potential buyers are advised to recheck the measurements.