

Elm Grove, SW19

£345,000

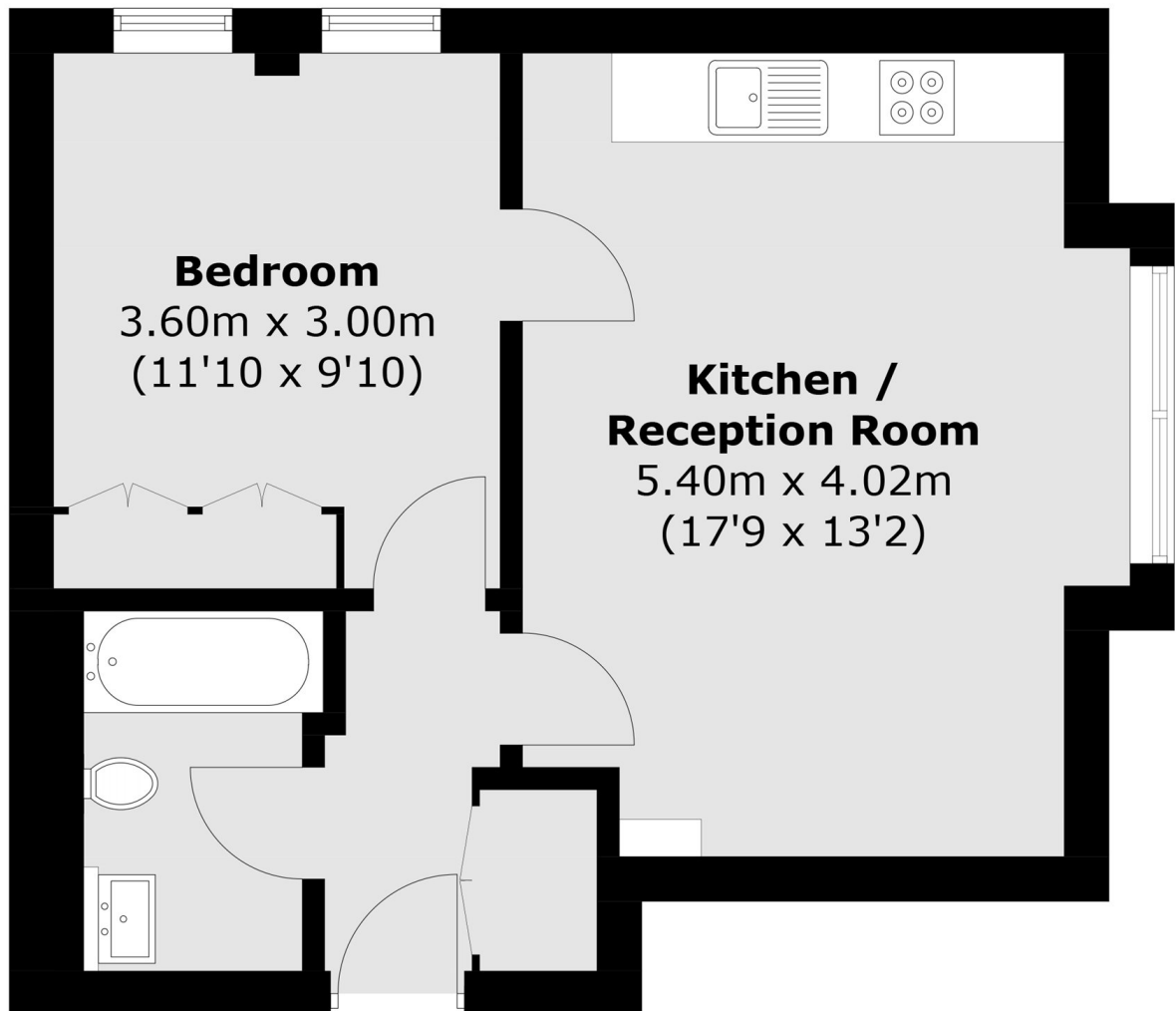
A top floor, one double bedroom new build apartment, completed to an exceptional standard. There is a lift in the building and a new lease applied.

Elm Grove is a cul-de-sac situated just off of Worple Road and just under half a mile walk from Wimbledon Broadway allowing easy access to the town centre's restaurants and shops. Transport links include overground, underground and a number of good bus routes.

Features

- One Double Bedroom
- Top Floor
- Lift In The Building
- No Onward Chain
- New Lease
- New Build Apartment

Elm Grove,
LONDON, SW19



Total area (approx.): 40.6 sq. m (437.0 sq. ft)