

# Brickett Close

Ruislip • • HA4 7YF  
Asking Price: £280,000



coopers  
est 1986

# Brickett Close

Ruislip • • HA4 7YF

This well-laid-out ground floor maisonette features a bright lounge, separate kitchen, generous double bedroom, and a modern bathroom, all accessed from a central hallway. Offering comfortable single-level living, it's ideal for first-time buyers, downsizers, or investors.

ONE BEDROOM

GROUND FLOOR

MAISONETTE

PRIVATE GARDEN

NO ONWARD CHAIN

MODERN BATHROOM

MODERN KITCHEN

EXCELLENT CONDITION

SOUGHT AFTER LOCATION

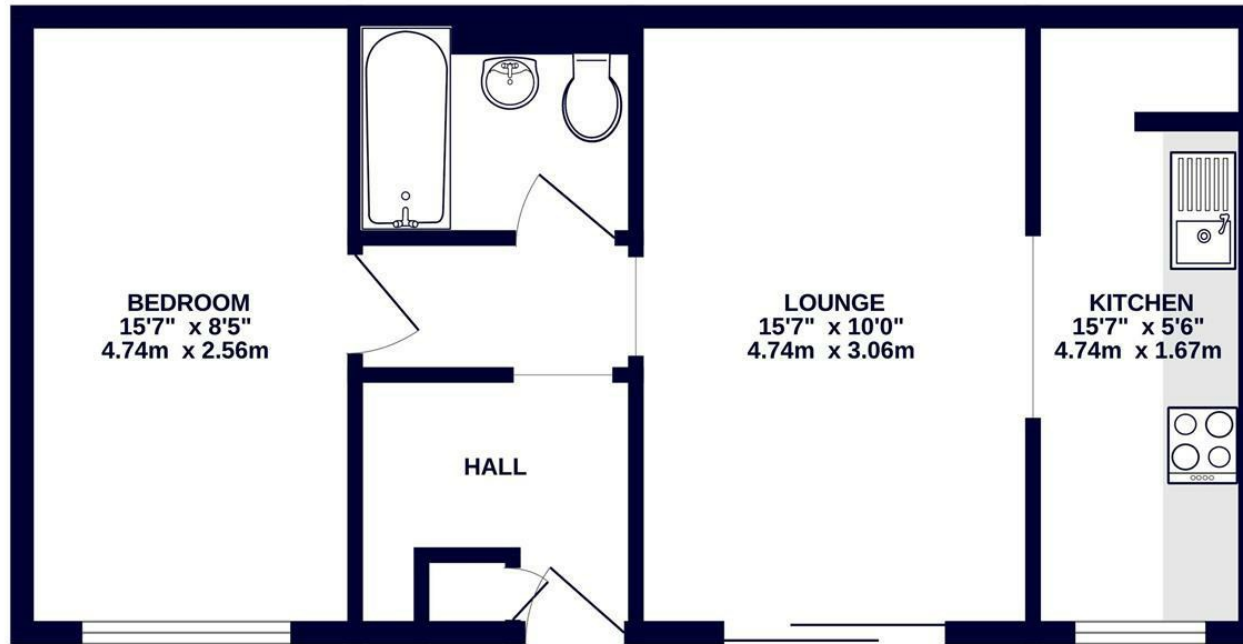
479 SQ.FT

These particulars are intended as a guide and must not be relied upon as statements of fact. Your attention is drawn to the Important Notice on the last page.





GROUND FLOOR  
479 sq.ft. (44.5 sq.m.) approx.



TOTAL FLOOR AREA : 479 sq.ft. (44.5 sq.m.) approx.

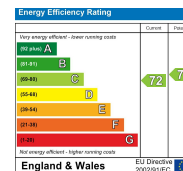
Whilst every attempt has been made to ensure the accuracy of the floorplan contained here, measurements of doors, windows, rooms and any other items are approximate and no responsibility is taken for any error, omission or mis-statement. This plan is for illustrative purposes only and should be used as such by any prospective purchaser. The services, systems and appliances shown have not been tested and no guarantee as to their operability or efficiency can be given.

Made with Metropix ©2025



126-128 High Street, Ruislip,  
Middlesex, HA4 8LL  
ruislipsales@coopersresidential.co.uk

CoopersResidential.co.uk



Important Notice: These particulars, whilst believed to be accurate are set out as a general outline only for guidance and do not constitute any part of an offer or contract. Intending purchasers should not rely on them as statements or representation of fact, but must satisfy themselves by inspection or otherwise has the authority to make or give any representation or warranty in respect of the property.