

ALLDAY  
& MILLER



Parkfield Avenue, Uxbridge, UB10 0DG  
£2,250 Per Month

3 1 2 C



Parkfield Avenue, Uxbridge, UB10 0DG

**£2,250 Per Month**

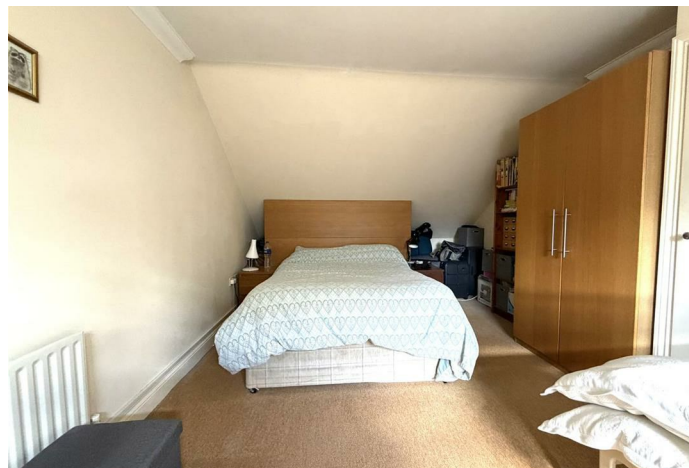
- Three Bedroom Terraced House
- Large Family Bathroom
- Conservatory Room With Storage Facility
- Driveway Parking For One Car
- Excellent Condition Throughout
- Three Double Bedrooms
- Downstairs W/C
- Well Kept Garden
- Large Loft Room On The Second Floor
- Modern Kitchen With White Goods Provided

## Description

Situated on the ever popular Parkfield Avenue in Hillingdon, this spacious three bedroom terraced home is arranged over three well proportioned floors, offering versatile and comfortable family living throughout. Boasting three generous double bedrooms, a great sized private rear garden and driveway parking for one car, this property combines space, practicality and a highly convenient location.

## Situation

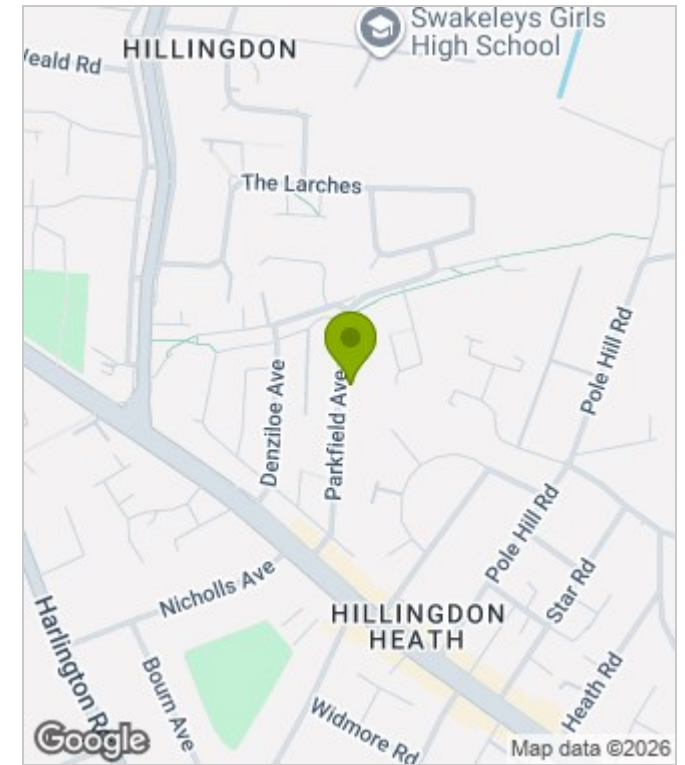
Located on Parkfield Avenue in the popular residential area of Hillingdon, this property is ideally positioned for families and commuters alike. The area offers a range of local amenities including shops, supermarkets, cafes and nearby parks. Uxbridge town centre is within easy reach, providing further retail, dining and leisure facilities. Excellent transport links are available via Hillingdon and Uxbridge Underground stations, with access to Central London. Road connections are also strong, with the A40, M40 and M25 all nearby. The property is also well served by a selection of highly regarded local schools.



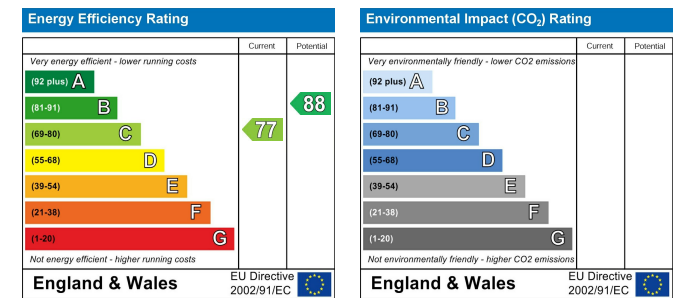
## Floor Plans



## Area Map



## Energy Performance Graph



These particulars, whilst believed to be accurate are set out as a general outline only for guidance and do not constitute any part of an offer or contract. Intending purchasers should not rely on them as statements of representation of fact, but must satisfy themselves by inspection or otherwise as to their accuracy. No person in this firm's employment has the authority to make or give any representation or warranty in respect of the property.