



Grafton Square, SW4

£9,000 Per calendar month

Dexters



Grafton Square, SW4

An elegantly refurbished and rarely available five double bedroom, three bathroom house, located on this beautiful garden square in Clapham Old Town. Offering spacious living over five floors.

The property is set over a huge five floors, with feature fireplaces, wooden flooring, neutral decor, breakfast island, a conservatory style integrated kitchen, two en suite bathrooms and a private landscaped garden to the rear of the property.

This is an ideal property for entertaining guests in the summer months. The property also offers extra storage space within the eaves for those suitcases.

Situated in one of the most desirable residential squares in South West London. With access to many boutique shops, restaurants, cafes and bars, also Clapham Common tube station.

Features

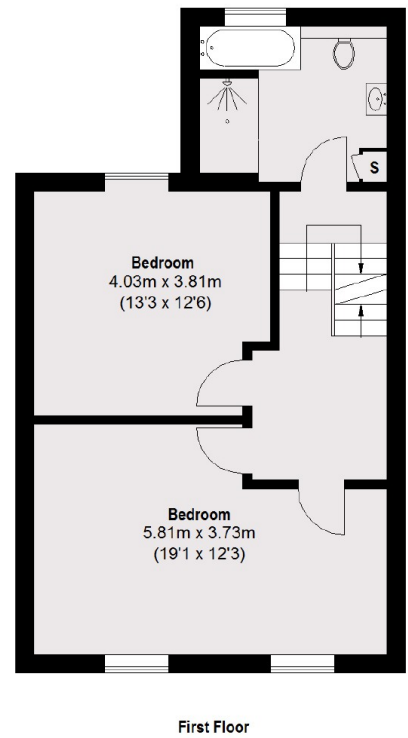
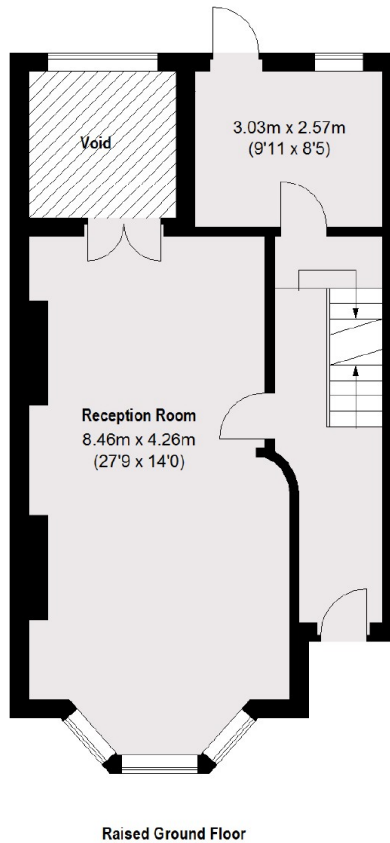
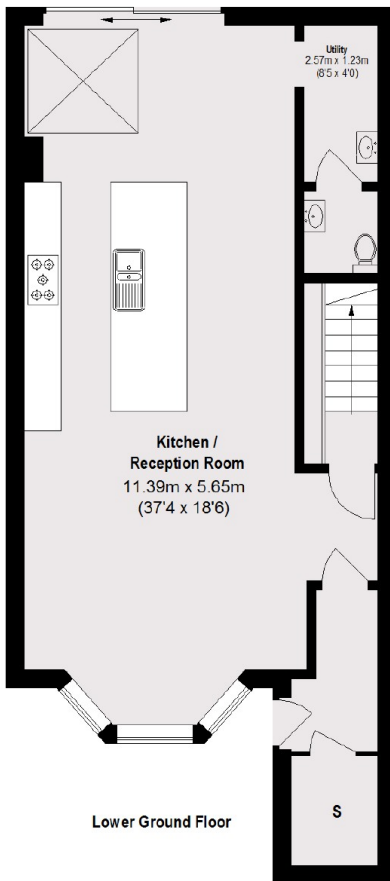
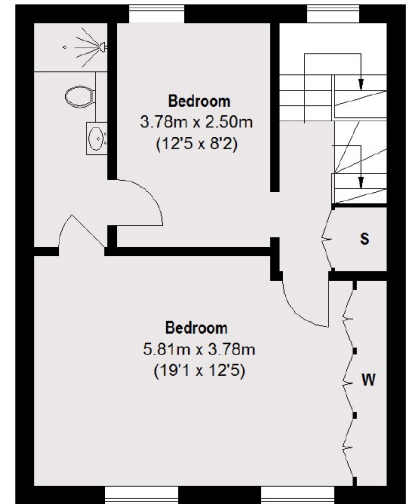
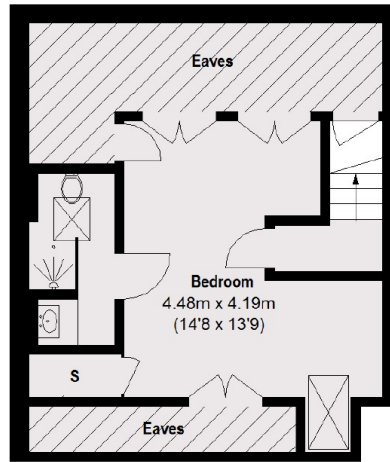
- Georgian Conversion
- Double Reception Room
- Modern Kitchen
- Dining Room
- Five Double Bedrooms
- Three Bathrooms







Grafton Square, London, SW4



Total area (approx.):(Excluding Void / Eaves) = 240.54 sq. m (2589 sq. ft)