



Eton Court, Eton Avenue, Belsize Park, NW3

Recently refurbished to an extremely high decorative standard and comprising 1,852sq ft. (172 sqm), is this fantastic lateral flat situated on one of the most sought-after roads in Belsize Park. Found on Eton Avenue in Eton Court, this beautiful apartment consists of a large 507sq ft. (47 sqm) principal bedroom with separate dressing area and small balcony, second bedroom with fitted wardrobes and a small balcony, two beautiful modern bathrooms, an exceptionally large L shaped reception room with separate lounge and dining areas and a stylish open plan kitchen with built in breakfast bar and there is also a small utility room off of the hall way.

Belsize Park Station (Northern Line) is just a short walk of half a mile and Swiss Cottage Station (Jubilee Line) is only 0.2 miles

GUIDE PRICE: £2,800,000

**TENURE: SHARE OF FREEHOLD -
953 YEARS REMAINING**

SERVICE CHARGE: Crica £10,000

COUNCIL TAX BAND: G

EPC RATING: D

ARLINGTON
RESIDENTIAL

These particulars have been produced as a general guide for this property only and no other purpose. They are not an offer or contract. You should not rely on statements in these particulars or by word of mouth or in writing as being factually accurate about the property, its condition or its value. Neither any primary agent or joint agent has any authority to make or give any representations or warranties in relation to the property, and accordingly, any information given is entirely without responsibility on the part of the agents or lessor(s). The photographs show only certain parts of the property as they appeared at the time they were taken. Any areas, measurements and distances given are approximate only. Any reference to alterations to, or use of, any part of the property does not mean that any necessary planning, building regulations or other consent has been obtained nor have any services, equipment or facilities been tested. A lessee should satisfy themselves by inspection or otherwise. The VAT position relating to the property may change without notice. Please contact us for further information regarding the approved Client Money Protection (CMP) scheme and the property redress scheme which we are a member of.







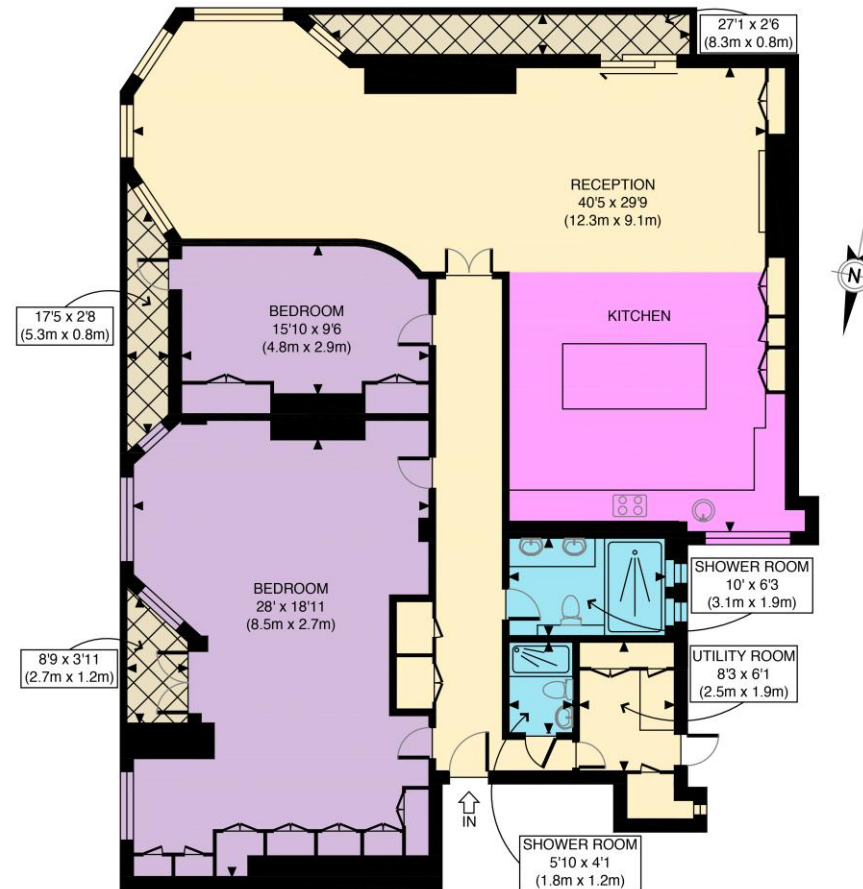












FOURTH FLOOR
GROSS INTERNAL
FLOOR AREA 1852 SQ FT

APPROX. GROSS INTERNAL FLOOR AREA 1852 SQ FT / 172 SQM	
Disclaimer: Floor plan measurements are approximate and are for illustrative purposes only. While we do not doubt the floor plan accuracy and completeness, you or your advisors should conduct a careful, independent investigation of the property in respect of monetary valuation	
Eton Court	date 22/03/24
	photoplan