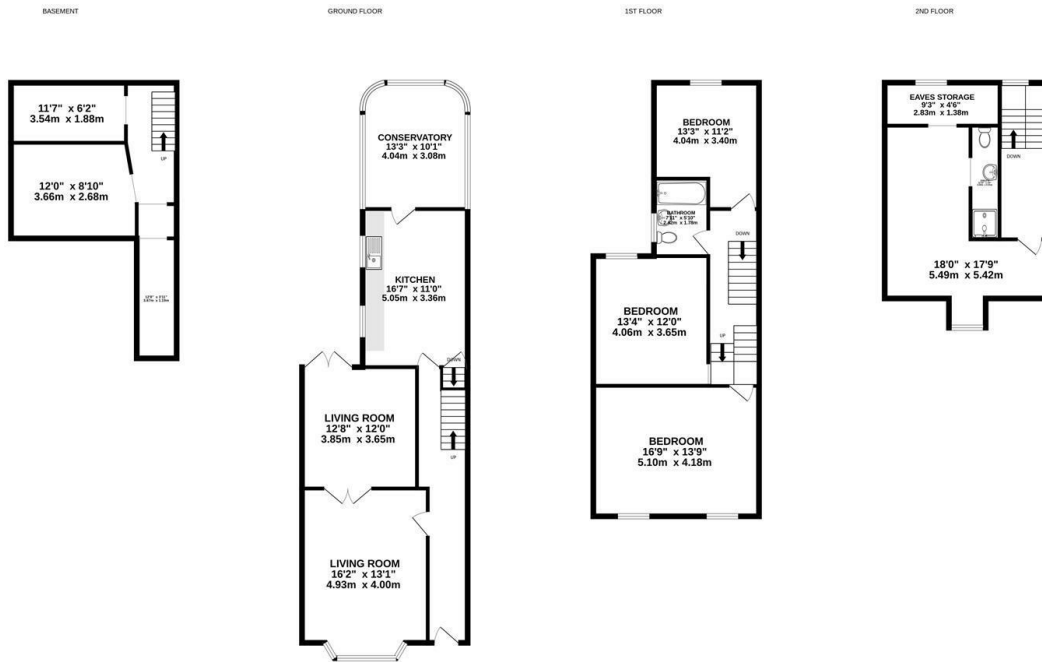




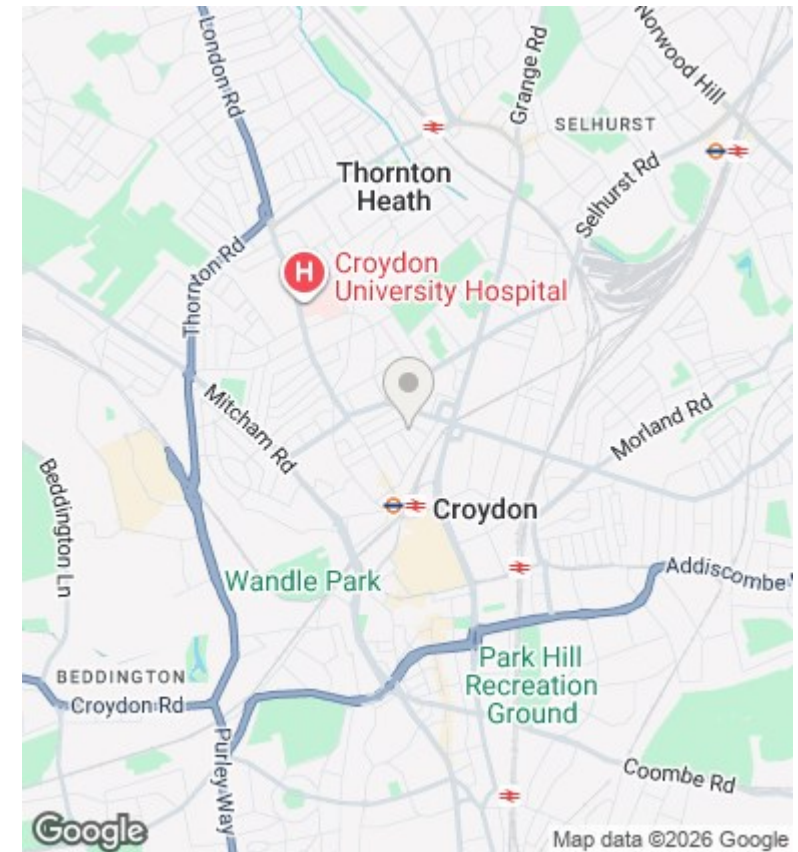
36 Kidderminster Road, Croydon, CR0 2UE

Offers In The Region Of £550,000

- Four-bedroom terraced house
- Bi-fold doors between reception rooms
- Principal bedroom with en-suite
- Viewing highly recommended
- Character-filled family home
- Kitchen diner and conservatory
- Beautiful private rear garden
- Two spacious reception rooms
- Versatile basement accommodation
- Driveway parking



Whilst every attempt has been made to ensure the accuracy of the floorplan contained here, measurements of doors, windows, rooms and any other items are approximate and no responsibility is taken for any error, omission or mis-statement. This plan is for illustrative purposes only and should be used as such by any prospective purchaser. The services, systems and appliances shown have not been tested and no guarantee as to their operability or efficiency can be given.
Made with Metropix ©2026



Directions

Viewings

Viewings by arrangement only. Call 0208 681 8133 to make an appointment.

Council Tax Band

E

EPC Rating:

D

