

Location:

Winchester Street is a residential street. Only a short walk to the transport amenities and the shopping conveniences on Acton High Street and Chiswick High Road.

Key points:

- 2 Double Bedrooms
- Grade II* listed building
- 2 Bathrooms
- 822 sqft
- Communal gardens
- Close to Acton High street
- Walking distance to Churchfield Road

Do Better:

Acton

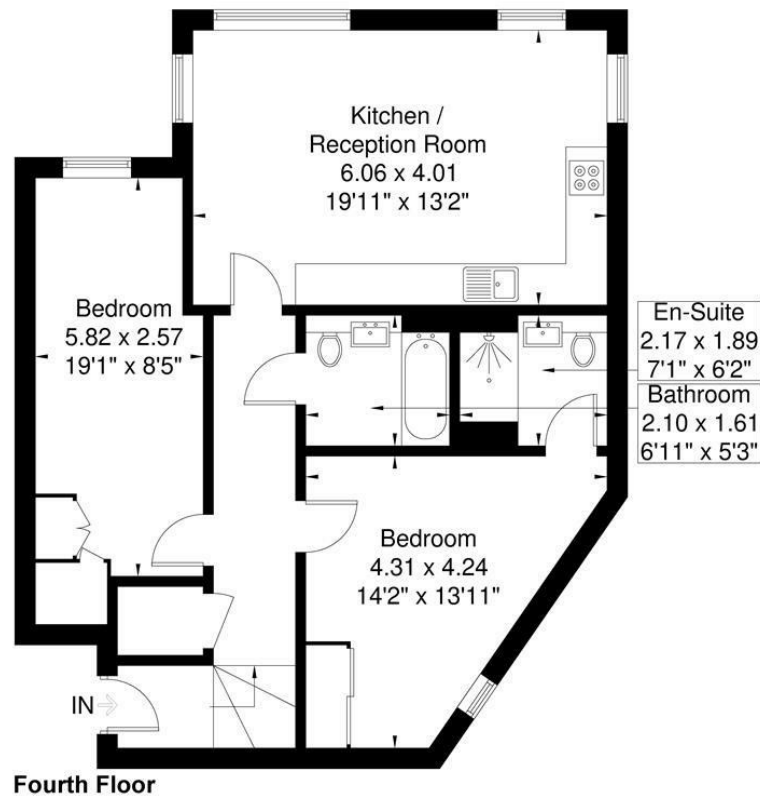
sales@astonrowe.co.uk

57-59 Churchfield Road,
Acton, London, W3 6AY

020 8992 3600

Acton Town Hall

Approximate Gross Internal Area = 76.4 sq m / 822 sq ft



Although every attempt has been made to ensure accuracy, all measurements are approximate. The floorplan is for illustrative purposes only and not to scale. © www.perspective.co.uk

Energy Efficiency Rating		Environmental Impact (CO ₂) Rating	
Current	Potential	Current	Potential
Very energy efficient - lower running costs			
Very environmentally friendly - lower CO ₂ emissions			
England & Wales		England & Wales	
EU Directive 2002/91/EC		EU Directive 2002/91/EC	



Asking Price £575,000

Winchester Street, London W3 8UH

- 1 Reception Rooms
- 2 Bedrooms
- 2 Bathrooms

The current owner says:

**We love great views
and fantastic light in
the apartment.**

Aston Rowe are proud to present this two bedroom, two bathroom Grade II* listed apartment in the iconic Old Town Hall. This beautiful building and apartment is set over 822 sqft and benefits from a modern open plan kitchen/living room with large windows allowing great light in the apartment. There are also two good sized double bedrooms, with the master offering an en-suite and fitted wardrobes. Further benefits include a separate modern family bathroom and storage cupboard. The apartment also benefits from a stunning communal garden to the rear of this wonderful building. The Old Town Hall has been fully renovated & restored to an exacting standard, whilst maintaining a wealth of charm & character throughout. The apartment is moments away from the wide array of shops and restaurants Acton has to offer on the High Street and Churchfield Road. Local transport links include Acton Town tube station (Piccadilly and District Lines), Acton Central (Overground) and Acton Mainline (Elizabeth Line) as well as excellent bus services to nearby Shepherds Bush, Chiswick, and Hammersmith. The M4 and M40 motorway routes are also easily accessible.



What's better:

**A two bedroom, two bathroom Grade II*
listed apartment in W3**

