



Grange Road, Eccles

Manchester



Offers in Region of £600,000



# Grange Road

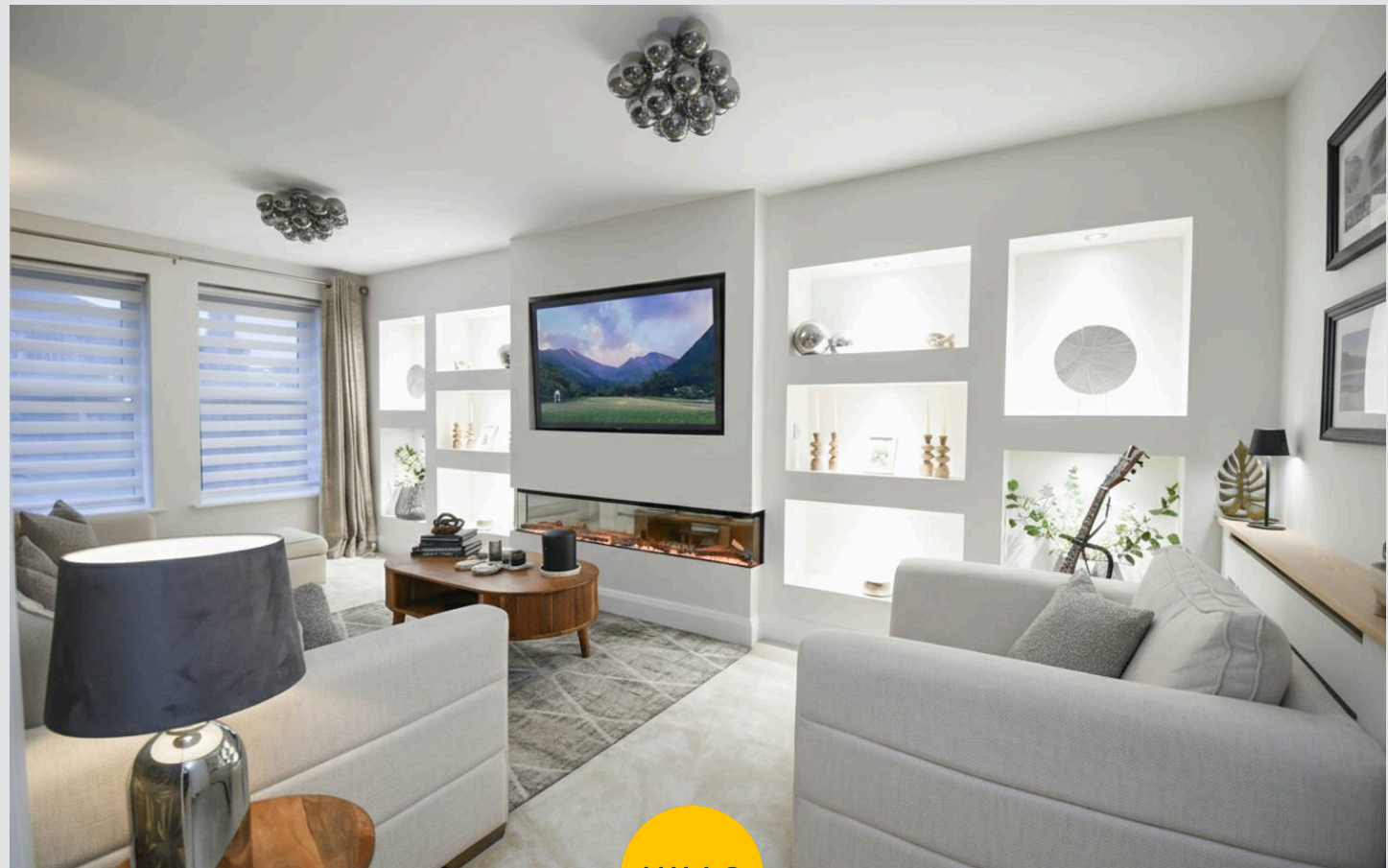
Eccles, Manchester

Stunning five bed semi over three floors near Monton and Worsley. Open plan living, luxury kitchen, two bathrooms, master suite, and immaculate finish. Ideal for families and commuters.

Council Tax band: E

Tenure: Freehold

- Laid Across Three Impressive Floors and Presented to a Show Home Standard Throughout
- Perfectly Positioned between the Prestigious Monton & Worsley Villages
- Spacious Open Plan Kitchen, Living & Dining Space and a Family Lounge with built in Media Wall
- Five Generously Sized Bedrooms Laid across the Upper Two Floors, the Master an Impressive 20ft
- Two Four Piece Family Bathrooms, Guest W.C. and Utility Room
- Off Road Parking for Multiple Cars and Beautiful Low Maintenance Rear Garden Benefitting from the Sun
- Excellently Located Close to the Sought After Schooling, Amenities & Brilliant Transport Links



HILLS



### Entrance Hallway

### Lounge

19' 5" x 10' 3" (5.92m x 3.12m)

### Kitchen

18' 7" x 17' 5" (5.66m x 5.31m)

### Utility Room

10' 3" x 6' 4" (3.12m x 1.93m)

### Downstairs W.C.

7' 3" x 2' 8" (2.21m x 0.81m)

### Landing

### Bathroom One

10' 3" x 7' 5" (3.12m x 2.26m)

### Bedroom Three

12' 2" x 10' 3" (3.71m x 3.12m)

### Bedroom Four

15' 3" x 10' 4" (4.65m x 3.15m)

### Office / Bedroom Five

6' 5" x 8' 8" (1.96m x 2.64m)

### Landing

### Bedroom One

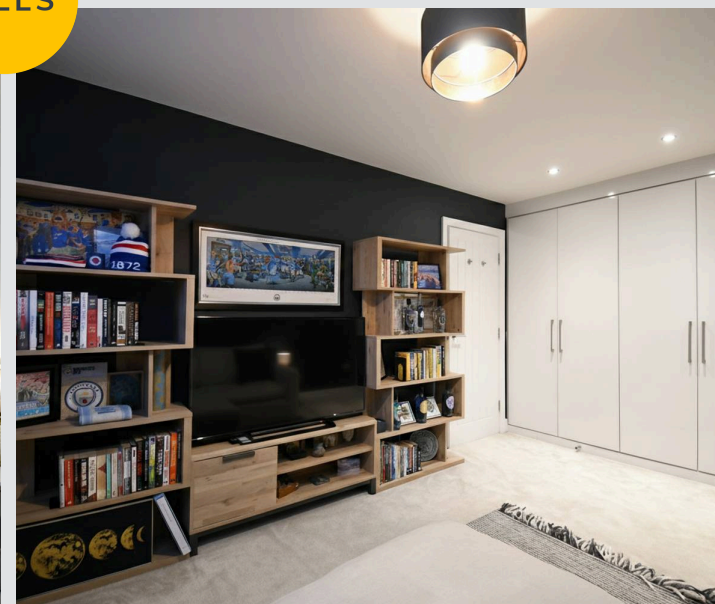
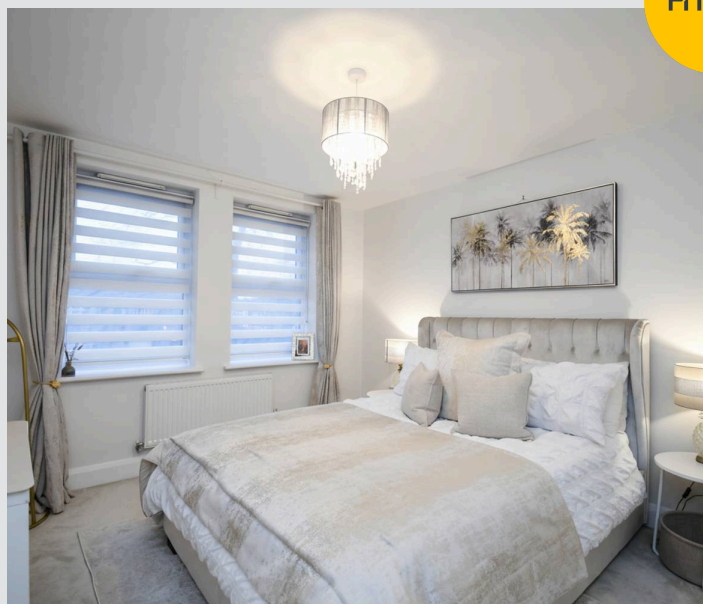
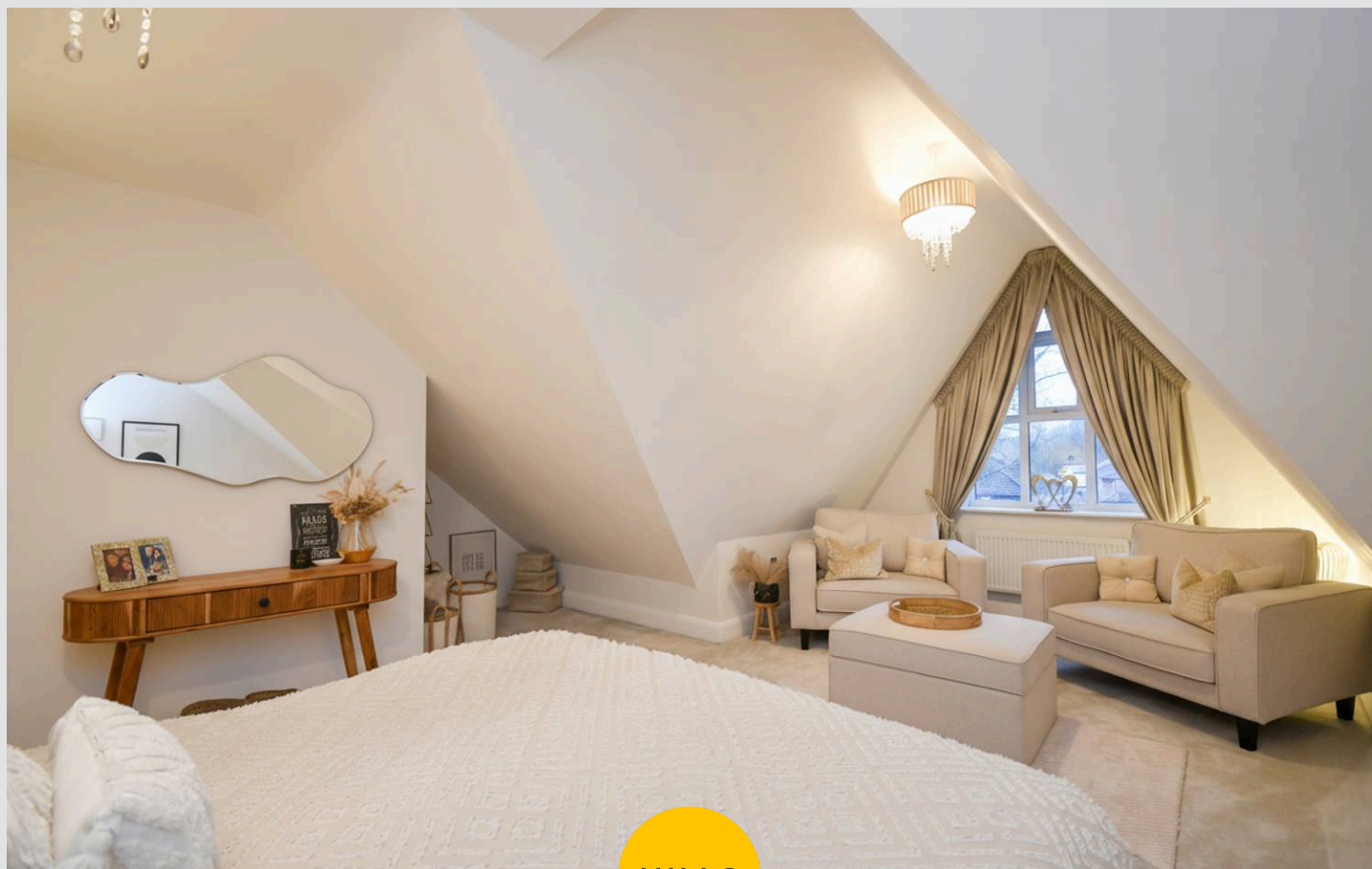
20' 1" x 17' 5" (6.12m x 5.31m)

### Bedroom Two / Dressing Room

12' 2" x 11' 0" (3.71m x 3.35m)

### Bathroom Two

8' 3" x 7' 7" (2.52m x 2.31m)



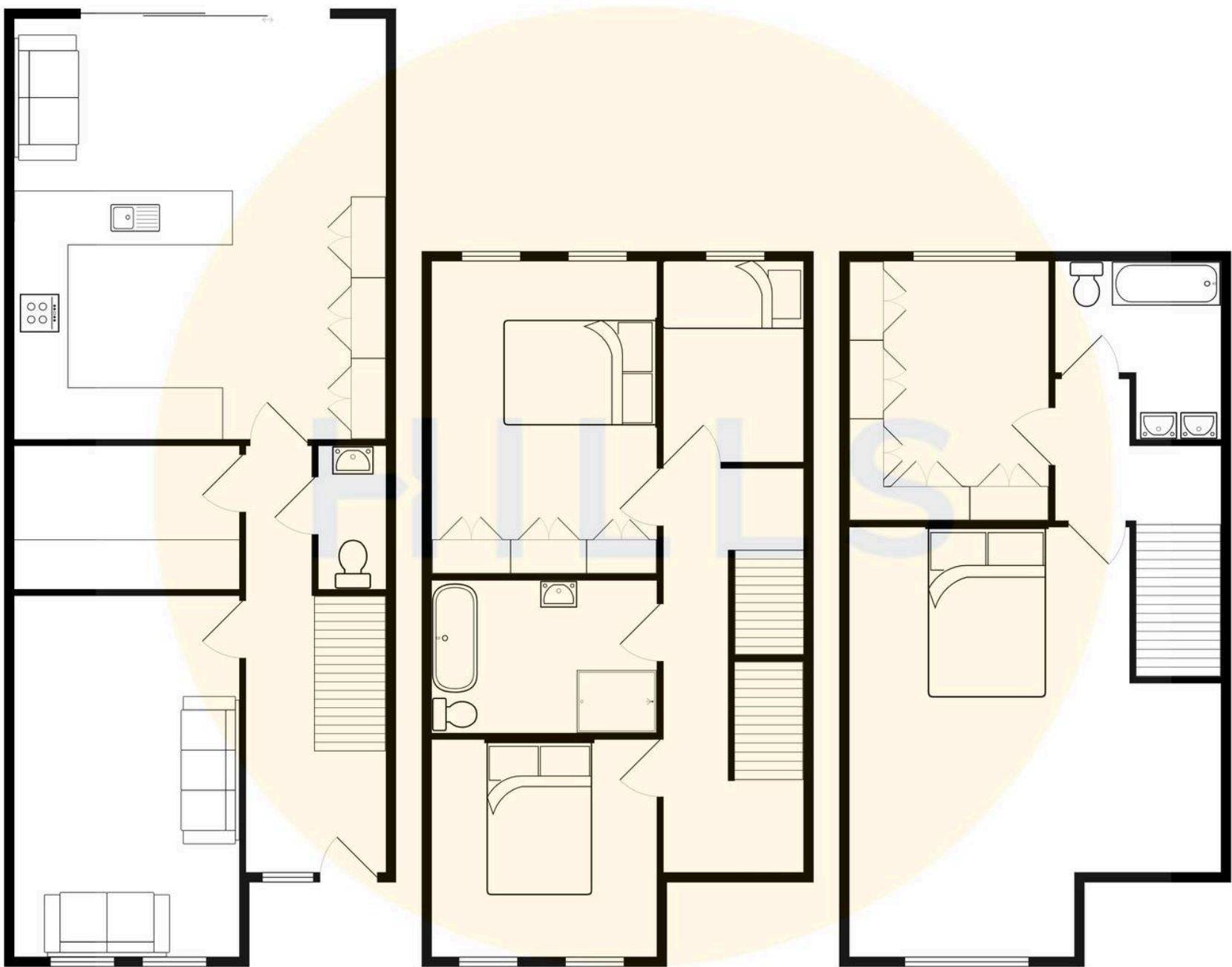




HILLS











## Hills | Salfords Estate Agent

Hills Residential, Sentinel House Albert Street – M30 0SS

0161 707 4900

[sales@hills.agency](mailto:sales@hills.agency)

[www.hills.agency/](http://www.hills.agency/)



By law, we are required to conduct anti-money laundering checks on all potential buyers and sellers. In line with HMRC guidelines, our trusted partner, Coadjute, will securely manage these checks on our behalf. A non-refundable fee of £45 + VAT per person will apply, and Coadjute will handle the payment. Once an offer is accepted, Coadjute will send a secure link for you to complete the biometric checks. These checks must be completed before we can send the memorandum of sale to all parties. PLEASE NOTE: The Agent has not tested any equipment, fixtures, fittings or services so cannot verify that they are in working order or fit for the purpose. References to the properties tenure are based on information supplied by the seller. You are advised to check the availability of this property before travelling any distance to view. Every effort has been made to ensure these particulars are correct and not misleading but their accuracy is not guaranteed nor do they form part of any contract.