



Upper Berkeley Street, W1H

£3,185 Per calendar month

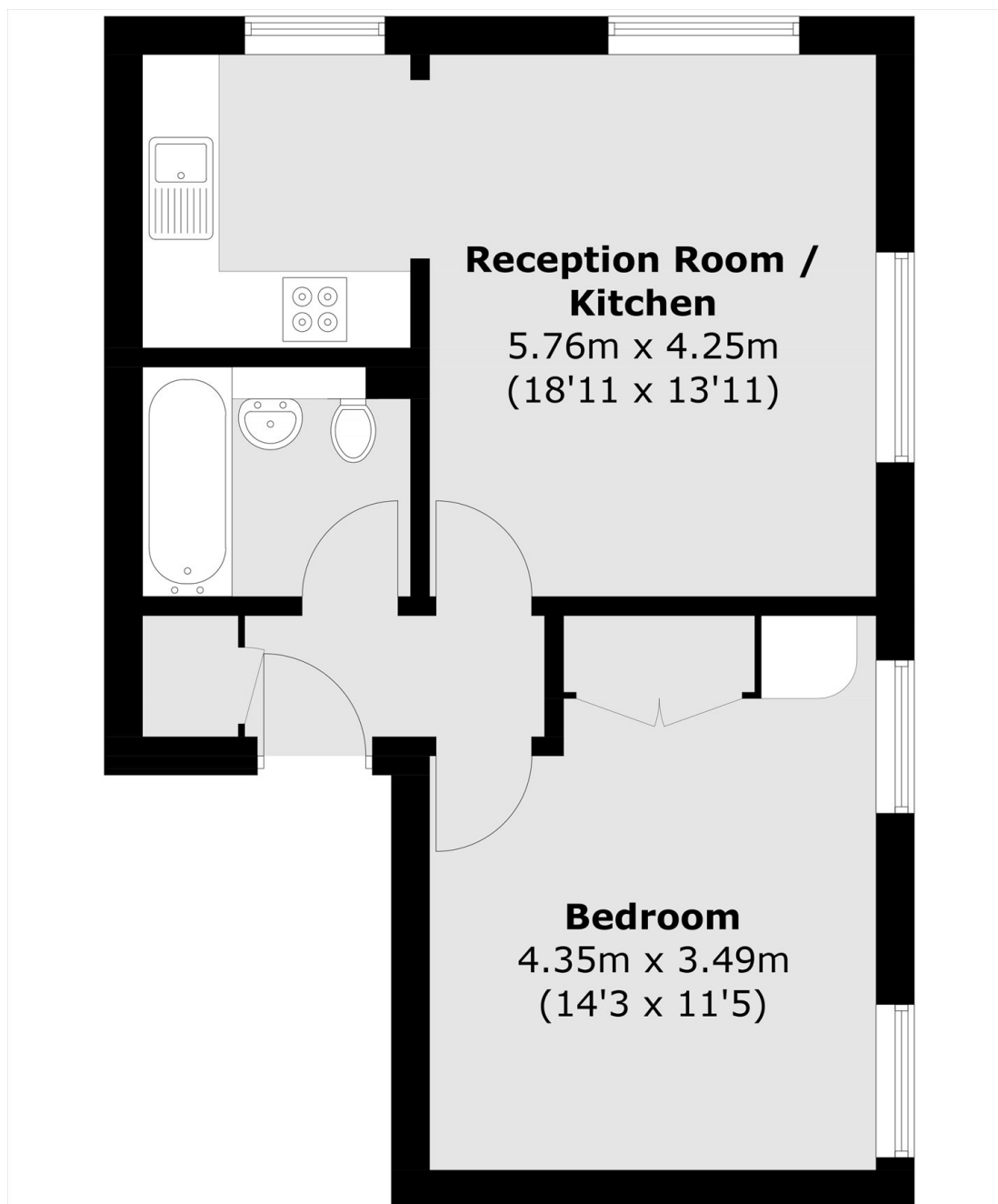
A well-presented one bedroom apartment on the top floor of this attractive Georgian building in Portman Village. The property has a reception room leading through to the kitchen, a double bedroom and bathroom.

Upper Berkeley Street is on the corner of New Quebec Street in Portman Village which has some of the most vibrant and independent restaurants and boutique shops in London. Marble Arch and Bond Street stations are close by, as well as the open spaces of Hyde Park.

Features

- Third Floor Flat
- One Bedroom
- One Bathroom
- Reception
- Unfurnished
- The Portman Estate

Upper Berkeley Street, London, W1H



Third Floor

Total area (approx.): 42.8 sq. m (460.7 sq. ft)