

Plot 1 Moyness
Road, Auldearn,
Nairn, IV12 5JZ



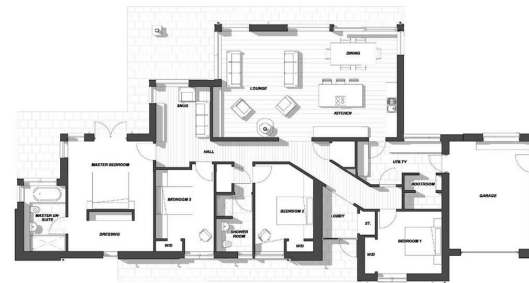
Offers Over £625,000



Impressive contemporary development by Prestige Properties, consisting of three architect-designed homes. These luxury properties combine the best in traditional and modern construction, marrying design excellence with exquisite materials. If you have always dreamed of living in a home designed specifically around you, then this is your chance to make that happen... a customised new build without the stress of self-building. The developers will take you step-by-step through this unique opportunity and are at your disposal to guide you with every fixture, fitting and finish to fit your lifestyle perfectly.

This stunning 4 bedroom new build combines contemporary design and quality craftsmanship. The luxurious interiors will be done to the highest standard and will appeal to the discerning buyer looking for an immaculate family home. The house has been designed for modern open plan living with a cathedral ceiling in the main living area and floor to ceiling windows throughout, maximising the light and creating a bright, airy home. The room sizes are generous and the accommodation well thought out, cleverly utilising all the space available to provide excellent storage. The impressive kitchen/dining/lounge is the heart of the home. It provides a fantastic space which lends itself to the modern family's needs, as well as entertaining. The kitchen has a large island and integrated appliances. There is ample space for a large dining table and chairs, with a generous living area with sliding doors opening to the patio. There is a separate snug providing an additional reception room. The master bedroom offers French doors opening to the patio, as well as a dressing room and luxurious ensuite bathroom. There are 3 further double bedrooms, all with fitted wardrobes and a shower room. A useful utility room and boot room completes the accommodation and allows access to the integral garage.

- Stunning contemporary architect designed single level home
- luxury kitchen and bathrooms
- Garden extends to 0.5 acre
- stylish quality finishes throughout
- Carport, private gardens and large patio
- Land and build package



Ground floor
1 : 100
TOTAL FLOOR AREA = 230m²

Viewing: Don't delay – get in touch with Tailormade Moves today to arrange a viewing

The Greenhouse Beechwood
Business Park
Inverness
Highland
IV2 3BL

E:
info@tailormademoves.co.uk
T: 01463 233218

