



128 North Block County Hall Belvedere Road

£3,150 PCM

LEONARD LEESE present to market this stunning apartment in grade II listed County Hall development, located one minute from Waterloo station and a short walk from Westminster. The apartment comprises two bedrooms, two bathrooms - one with large walk in wardrobe, separate eat-in kitchen and a spacious living room. Other benefits are underground parking, 24hr porter, swimming pool and gym. Offered furnished.

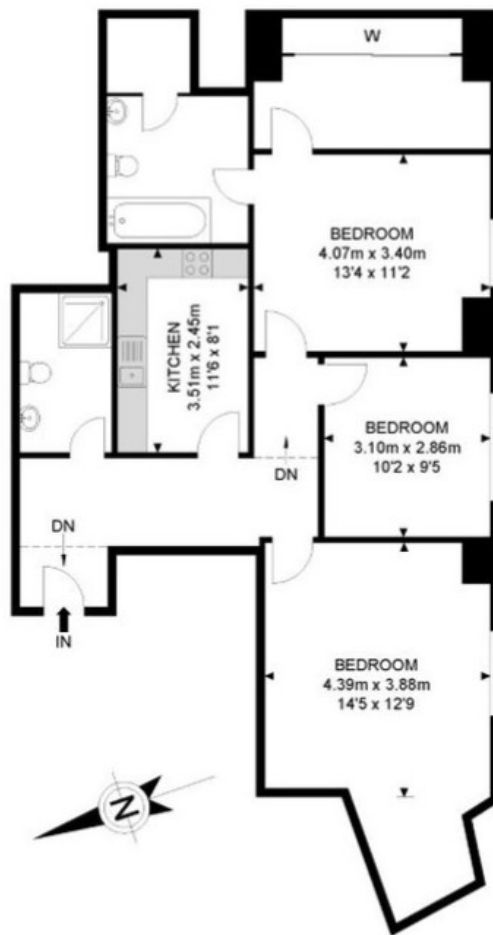
Call the lettings department to reserve a viewing on 0207 015 1360.



- Two Double Bedrooms • Two Bathrooms (one en-suite) • Eat-in Kitchen • Furnished • Spacious Living Room • Great Location







Lower Ground Floor



APPROX. GROSS INTERNAL FLOOR AREA 930.0 SQ FT / 86.40 SQM



Energy Efficiency Rating		
	Current	Potential
Very energy efficient - lower running costs		
(92 plus) A		
(81-91) B		
(69-80) C		
(55-68) D		
(39-54) E		
(21-38) F		
(1-20) G		
Not energy efficient - higher running costs		
England & Wales	EU Directive 2002/91/EC	

Agents Note: Whilst every care has been taken to prepare these particulars, they are for guidance purposes only. All measurements are approximate and are for general guidance purposes only and whilst every care has been taken to ensure their accuracy, they should not be relied upon and potential buyers/tenants are advised to recheck the measurements

Borough Lettings
230 Borough High Street
London
SE1 1JX

020 7015 1360
enquiries@leonardleese.com
www.leonardleese.com

