



Wilton Crescent  
Belgravia, SW1X

CHESTERTONS





A beautifully presented contemporary apartment of circa 1,698 sq ft, located on Wilton Crescent, moments from Hyde Park.

The accommodation comprises of a stunning double reception/dining room with wood flooring, separate modern kitchen, four double bedrooms with built-in storage and two bathrooms.

Wilton Crescent is located in the highly sought after Knightsbridge area, just a couple of minutes' walk from Hyde Park. Also in close walking distance are both Knightsbridge and Hyde Park tube stations and the popular shopping experience offered on Brompton Road and Harrods.

- Wooden floors
- High ceilings
- Furnished
- Professionally managed
- Prime location
- Built in storage

### £8,500 pcm

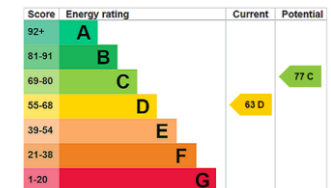
Additional tenant charges apply (fees apply to non-AST tenancies only)

Tenancy Agreement Fee: £300

References per Tenant/Guarantor: £60

Inventory check (approx. £100 – £250 inc. VAT)

[chestertons.co.uk/property-to-rent/applicable-fees](http://chestertons.co.uk/property-to-rent/applicable-fees)



**Minimum Term:** 12 months  
**Deposit Required:** 6 weeks  
**Local Authority:** Westminster  
**Council Tax Band:** H  
**EPC Rating:** D  
**Furnished**

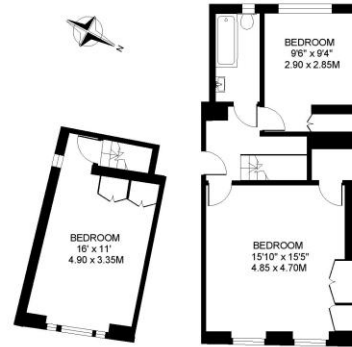
### Chestertons Knightsbridge & Belgravia Lettings

31 Lowndes Street  
 London  
 SW1X 9HX

[knightsbridgelettingsusers@chestertons.co.uk](mailto:knightsbridgelettingsusers@chestertons.co.uk)  
 02072353530  
[chestertons.co.uk](http://chestertons.co.uk)

WILTON CRESCENT, KNIGHTSBRIDGE, LONDON SW1

APPROXIMATE INTERNAL (LIVING) FLOOR AREA  
1698 SQ.FT. / 157.7 SQ.M.



GROUND FLOOR 700 SQ.FT.



LOWER GROUND FLOOR 998 SQ.FT.

COPYRIGHT: Floorplan produced for "Henry & James Estate Agents Ltd." by floorplanners.co.uk

This plan is not to a given scale, and is for guidance only, and must not be relied upon as a statement of fact.  
All measurements are maximum, and include window bays, and wardrobes where applicable.  
This plan has been prepared in accordance with the "RICS" Code of Measuring Practice.  
Where a room has a sloping ceiling, the dotted line indicates height at 1.5m, and measurements are shown at floor level.

Chesterton UK Services Limited trading as Chestertons for themselves and for the vendor of this property whose agents they are, give notice that (i) these particulars do not constitute any part of an offer or contract, (ii) all statements contained within these particulars are made without responsibility on the part of Chestertons or the vendor, (iii) whilst made in good faith, none of the statements contained within these particulars are to be relied upon as a statement or representation of fact, (iv) any intending purchasers must satisfy themselves by inspection or otherwise as to the correctness of each of the statements contained within these particulars, (v) the vendor does not make or give either Chestertons or any person in their employment any authority to make or give representation or warranty whatsoever in relation to this property. Wide angle lenses may be used. ©Copyright Chestertons | Chesterton Global Ltd | Registered Office 5th Floor, The Lantern, 75 Hampstead Road, London, NW1 2PL Registered Company Number 05334580.



This paper is  
100% recyclable