



Bailey Street, SE8

£400,000

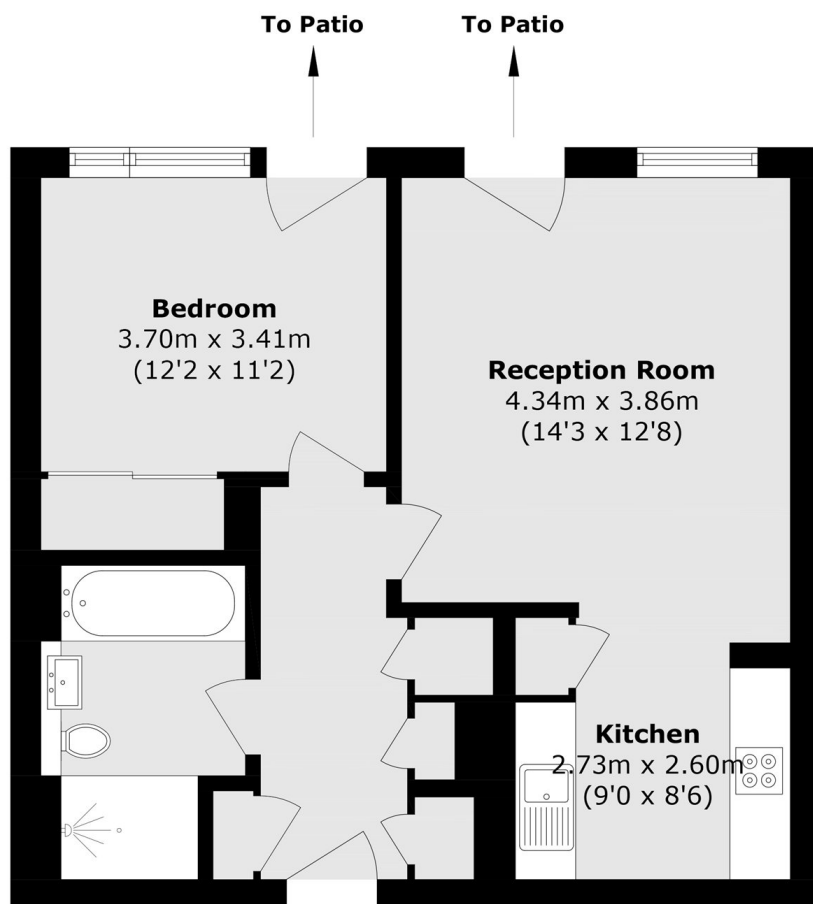
Located in this sought after development, this one double bedroom flat is immaculately presented and has a large open plan kitchen and living space, private terrace, secure allocated parking space, along with access to concierge facilities and an on-site gym.

Gothenburg Court is located within easy reach of the Jubilee Line and Overground and is surrounded by shops, cafés and restaurants. The river is also moments away.

Features

- One Double Bedroom
- Chain Free
- Modern Development
- Concierge & Gym Facilities
- Long Lease
- Allocated Parking Space

Bailey Street, London, SE8



First Floor

Total area (approx.): 51.9 sq. m (558.7 sq. ft)