






HOMES BY VICTORIA
ESTATE AGENCY

Underwood Close, Callow Hill, Redditch, B97 5YS

Offers Over £425,000

 4  2  2



A beautifully appointed four-bedroom detached family home, set within the highly sought-after Callow Hill area. This impressive property offers generous and versatile living space, complemented by a stunning landscaped garden and driveway parking, ideal for any growing family

homesbyvictoria.co.uk

victoria@homesbyvictoria | 07833 136521

FOR M HOMES MIDLANDS LIMITED trading as Homes By Victoria Company Number: 13688840 VAT no: 470190115



HOMES BY VICTORIA
ESTATE AGENCY

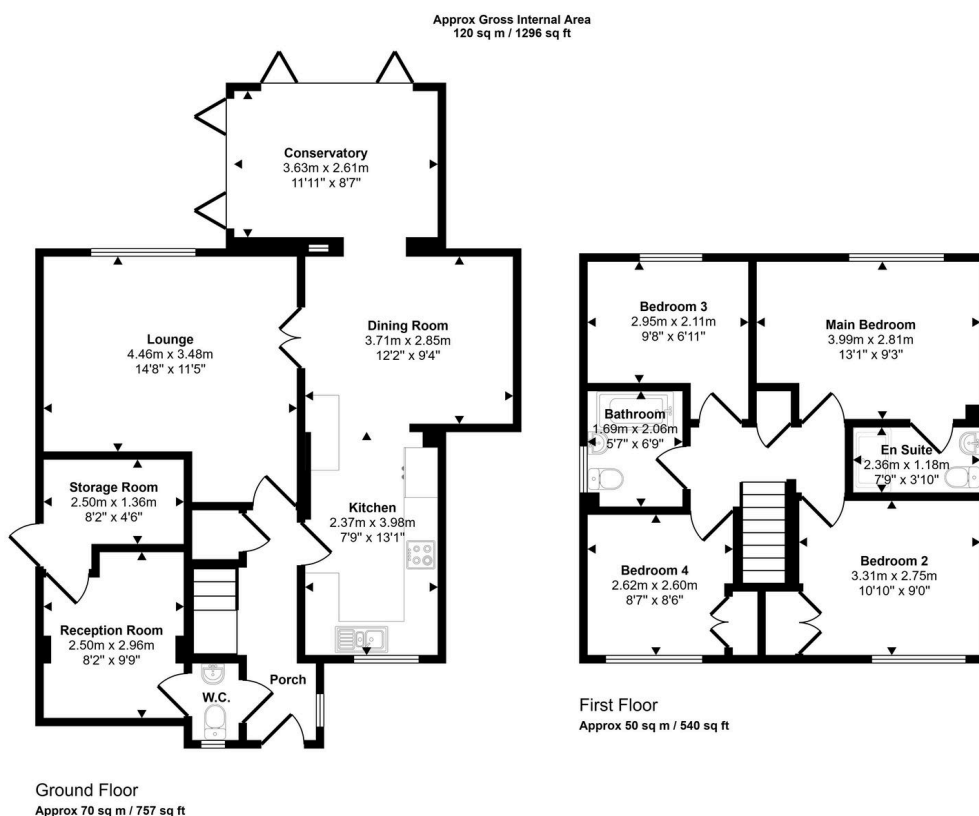


HOMES BY VICTORIA

ESTATE AGENCY

Key Features

- LOCATED IN THE HIGHLY SOUGHT AFTER AREA OF CALLOW HILL
- VERSATILE LIVING SPACE
- DOWNSTAIRS WC AND UTILITY SPACE
- FAMILY BATHROOM
- AMPLE OFF ROAD PARKING
- BEAUTIFULLY APPOINTED FOUR BEDROOM HOME
- STUNNING KITCHEN DINER SPACE
- MASTER BEDROOM WITH EN-SUITE
- LANDSCAPED GARDEN
- EPC RATING C



This floorplan is only for illustrative purposes and is not to scale. Measurements of rooms, doors, windows, and any items are approximate and no responsibility is taken for any error, omission or mis-statement. Icons of items such as bathroom suites are representations only and may not look like the real items. Made with Made Snappy 360.

