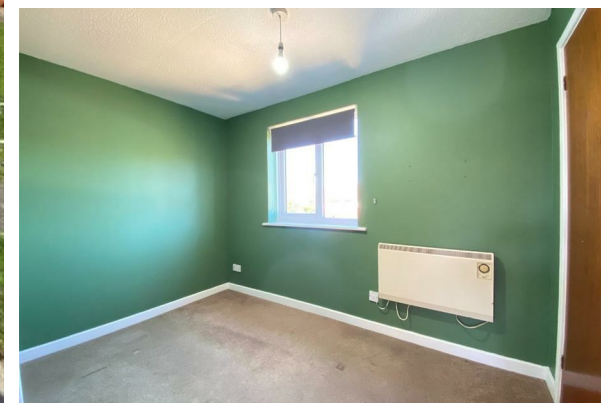




TO LET

31A Woodrow Road, Melksham, SN12 7AY

£1,000 Per Month



- Available Now
- Kitchen/Diner
- Double Glazing
- Parking
- Lounge
- Two Bedrooms
- Garden

Discover Melksham: A Charming Wiltshire Town with Excellent Connectivity

Nestled along the banks of the River Avon, Melksham is a market town that blends historical charm with modern conveniences. It offers a welcoming community atmosphere complemented by a range of amenities.

Local Amenities and Lifestyle

Melksham boasts a high street filled with independent shops, cafes, and traditional pubs. For leisure and recreation, the town offers several parks and green spaces, including King George V Playing Field, which features a playground, skate park and is home to Melksham Parkrun. The nearby Melksham Community Campus enhances the town's leisure offerings with swimming pool, sports hall, gym and cafe.

THE PROPERTY

Welcome to 31a Woodrow Road, Melksham. A two bedroom semi detached house on the edge of Melksham leading out toward Lacock.

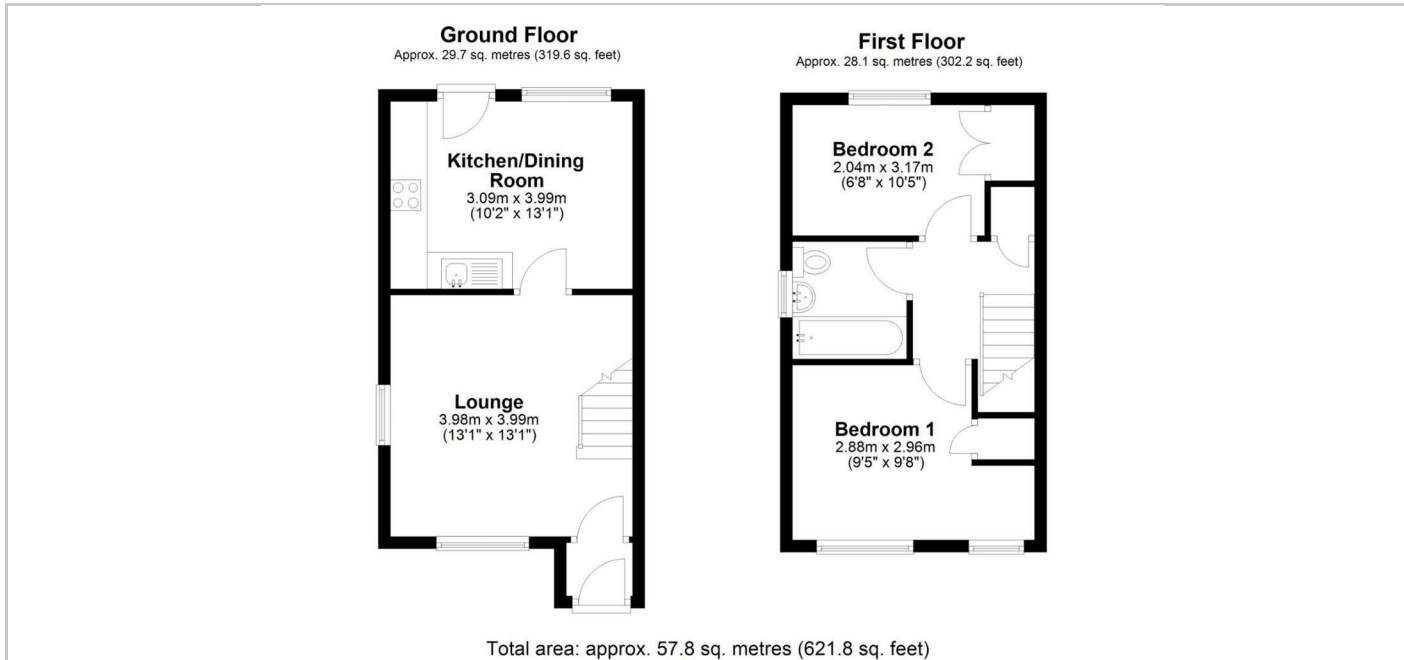
The ground floor accommodation comprises entrance hall, lounge with stairs to the first floor and kitchen dining room with door onto the rear garden. The first floor comprises landing with airing cupboard, two bedrooms both with built in storage and bathroom.

The property further benefits from double glazing, electric heating, a gated enclosed rear garden and driveway parking for circa three vehicles.

Please note the driveway is shared with the neighbouring property. As you look at the drive from the road the left-hand side is the neighbour's section and the right-hand side belongs to this property.

The landlord would prefer a longer term let.

SITUATION



Directions