



Levett Square, TW9

£695,000

A spacious two-bedroom apartment set within the popular Levett Square development by Taylor Wimpey. The property features a bright, open-plan reception room and benefits from two allocated, secure off-street parking spaces. Ideal for those seeking low-maintenance living in a peaceful and prestigious development.

Levett Square is a sought-after residential development set within beautifully landscaped communal gardens and is conveniently located within easy reach of the Thames Path, Kew Retail Park, and Kew Gardens Station, as well as a range of local village shopping amenities.

Features

- Two Double Bedrooms
- Riverside Development
- Two Allocated Parking Spaces
- Modern Finish
- Large Balcony
- No Onward Chain



Levett Square, TW9

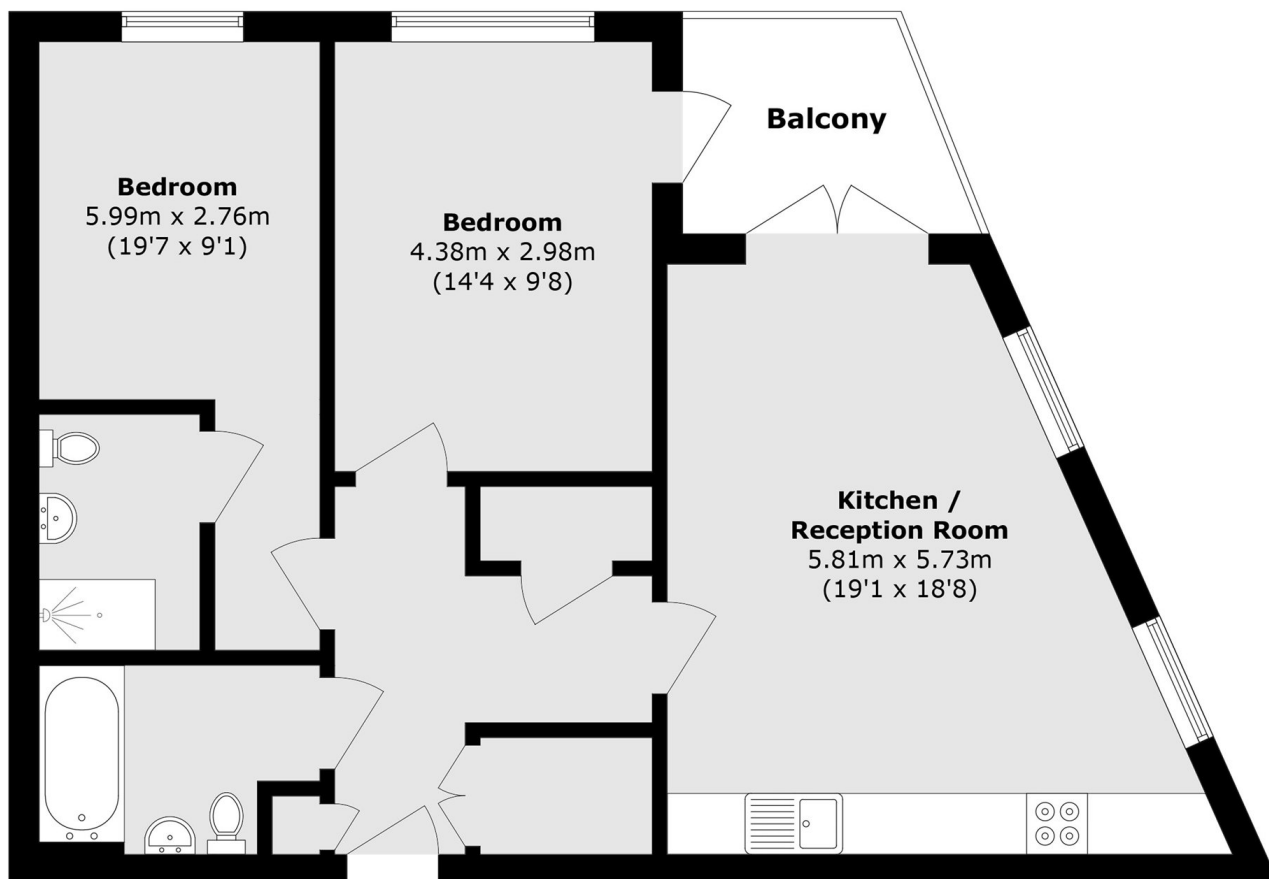
The property is accessed via a well-maintained communal entrance hall with a secure entry phone system, offering both lift and staircase access to the third-floor communal landing.

Upon entering the apartment, you are welcomed by a spacious entrance hall with ample built-in storage, leading to a large, bright, and airy open-plan reception room with direct access to a private balcony. The contemporary kitchen is fully fitted with high-quality integrated appliances, combining style with practicality. The accommodation comprises a generous principal double bedroom with a modern en-suite shower room, a further well-proportioned double bedroom, and a sleek family bathroom.

Additional benefits include two allocated parking spaces and a 24-hour on-site concierge service. The development also features beautifully landscaped communal gardens and enjoys easy access to the Thames Path, providing scenic riverside walks.



Levett Square, Richmond, TW9



Total area (approx.): 73.2 sq. m (787.9 sq. ft)

Balcony area (approx.): 5.3 sq. m (57.0 sq. ft)