

19 Salway Gardens

Axminster, Devon

19 Salway Gardens

Axminster
Devon EX13 5DA

A beautifully presented two-bedroom bungalow. Sat on a good-sized plot, featuring an incredible garden space, homely and spacious living area, and convenience of off-road parking and detached single garage.



- Detached Bungalow
- Beautifully Presented and Modern Interior
 - Driveway & Garage
 - Front & Rear Gardens
 - NO ONWARD CHAIN

Guide Price **£260,000**

Freehold

Axminster Sales
01297 33122
axminster@symondsandsampson.co.uk



THE PROPERTY

Discover the perfect blend of modern living and bungalow convenience at this modernised two-bedroom property located at the beginning of a cul-de-sac towards the outer edge of the small market town of Axminster. Situated within a more generous plot than most in the street, this property offers an exceptional combination of indoor and outdoor space, ideal for first time buyers, downsizers or anyone requiring single storey living.

ACCOMMODATION

Step inside and you'll instantly appreciate the condition and elegant presentation. The interior flows with neutral décor, creating a bright and welcoming atmosphere throughout. This is a home that's truly move-in ready, perfect for those looking to downsize without compromise.

The layout includes a light-filled lounge, a modern kitchen with a combination of base and eye level units fitted with an oven and microwave, a gas hob with extractor over and space for under counter white goods. A stylish modern shower room fitted with a double shower, low level W/C and wash hand basin with storage under. The main bedroom has fitted wardrobes, with the second bedroom having patio doors leading into a conservatory.

Whether you're seeking a peaceful retreat or a stylish and

manageable home in a quiet, well-connected neighbourhood, this outstanding bungalow delivers on every level.

OUTSIDE

To the front of the bungalow is a small area of lawn, running beside the property is the driveway which in turn leads to the garage. Gated side access opens into a rear garden that is laid to lawn with a good-sized timber shed and patio all enclosed with timber fencing.

SITUATION

Salway Gardens is located on the outskirts of Axminster, yet less than one mile in distance from the town centre. Axminster is a country town on the eastern fringes of Devon, close to borders with Dorset and Somerset. It offers a selection of shops including two supermarkets; plus schools, churches, health centre and hospital. It also plays host to Hugh Fearnley-Whittingstall's River HQ at Trinity Hill. The beautiful Axe Valley reaches the sea at Seaton (6 miles) along the Jurassic Coastline and the famed resort of Lyme Regis is a similar distance. Exeter (M5) 24 miles, Taunton 20 miles. Mainline train station on the London Waterloo route.

LOCAL AUTHORITY

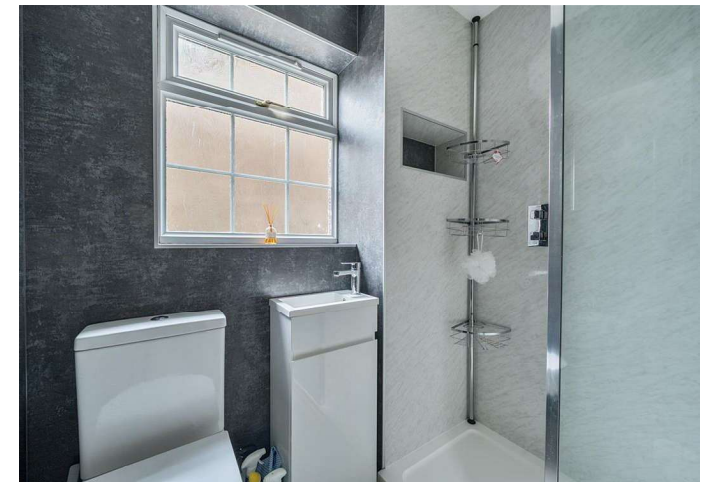
East Devon District Council Blackdown House, Border Road, Heathpark Industrial Estate, Honiton, EX14 1EJ. Tel : 01404 515616 Council Tax Band C.

SERVICES

All mains services connected

DIRECTIONS

What3Words
//passport.scoping.nothing



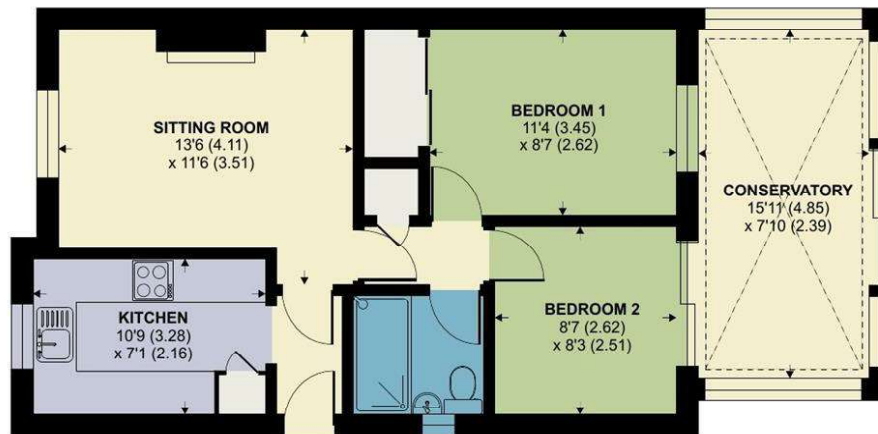
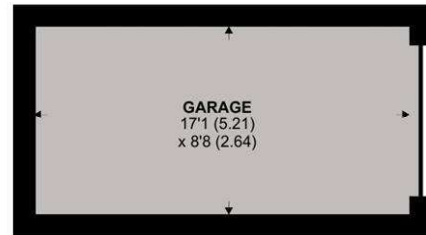
Salway Gardens, Axminster

Approximate Area = 650 sq ft / 60.4 sq m

Garage = 148 sq ft / 13.7 sq m

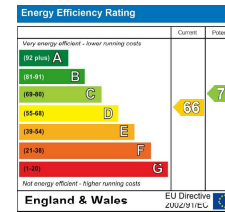
Total = 798 sq ft / 74.1 sq m

For identification only - Not to scale



GROUND FLOOR

Floor plan produced in accordance with RICS Property Measurement 2nd Edition, Incorporating International Property Measurement Standards (IPMS2 Residential). © nichecom 2025. Produced for Symonds & Sampson. REF: 1376360



Axm/ACR/5.11.25



01297 33122

axminster@symondsandsampson.co.uk
Symonds & Sampson LLP
, Trinity Square,
Axminster, Devon EX13 5AW



Important Notice: Symonds & Sampson LLP and their Clients give notice that: 1. They have no authority to make or give any representations or warranties in relation to the property. These particulars do not form part of any offer or contract and must not be relied upon as statements or representations of fact. 2. Any areas, measurements or distances are approximate. The text, photographs and plans are for guidance only and are not necessarily comprehensive. It should not be assumed that the properties have all necessary planning, building regulation or other consents and Symonds and Sampson LLP have not tested any services, equipment or facilities. 3. We have not made any investigation into the existence or otherwise of any issues concerning pollution of the land, air or water contamination and the purchaser is responsible for making his/her own enquiries in this regard. 4. The property is sold subject to and with the benefit of all existing wayleaves, easements and rights of way whether public or private, specifically mentioned or not. The vendors shall not be required to define any such rights, privileges or advantages.

SALES | LETTINGS | AUCTIONS | FARMS & LAND | COMMERCIAL | NEW HOMES | PLANNING & DEVELOPMENT