



DANIEL ARCHER

exp<sup>®</sup> UK

@ daniel.archer@exp.uk.com

🌐 danielarcher.exp.uk.com

☎ 07792 947 756

## Worple Road, Wimbledon, SW19

Guide Price £590000

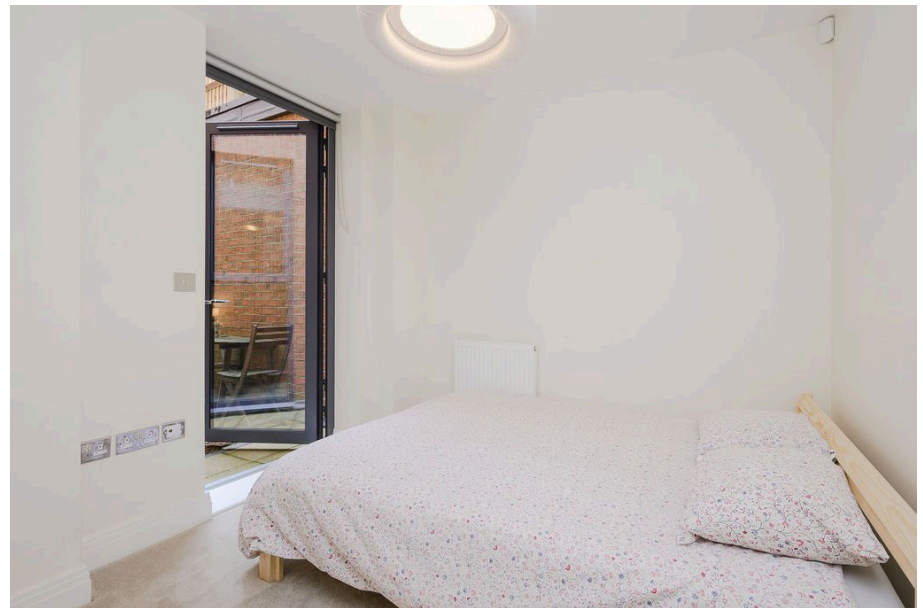
🛏️ 2 🚿 2 🛋️ 1

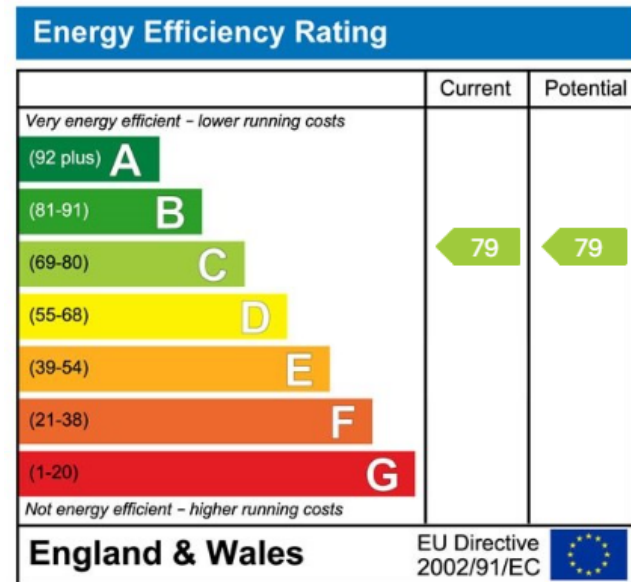
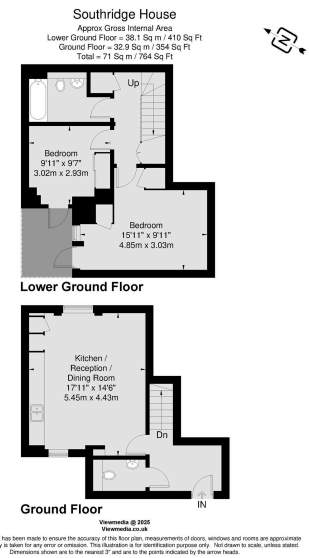
- Well Presented Two Bedroom Split Level Apartment (764 Sq.Ft)
- Modern Interiors and Neutral Finish
- Private Courtyard/Patio
- Gas Central Heating and Double Glazing
- Moments from Town Centre Shops, Bars and Restaurants
- Fantastic Central Wimbledon Location
- Bright and Spacious Open Plan Reception/Kitchen/Diner
- Modern Bathroom Plus Guest WC
- Short Walk to Wimbledon Station (Overground and Tube)
- Property Ref: DA 0587



Well presented two bedroom split level apartment (764 Sq.Ft) with private courtyard, superbly situated in a sought after central Wimbledon location, moments from transport links and vibrant amenities. Ideal for homeowner or investor alike, offering well planned accommodation laid out over two floors, with neutral finish and modern interiors throughout. Features include a generous open plan reception/kitchen/diner, modern bathroom, guest WC, inbuilt storage, quality floor coverings, gas central heating, double glazing and secure entry. Guide Price £600,000 to £650,000 Property Ref: DA 0587







eXp World UK Ltd is a registered company at Corporation Service Company (UK) Limited, 5 Churchill Place, 10th Floor, London, United Kingdom, E14 5HU. Registered company number is 12016573. VAT Registration Number is 327 4120 29