



## Shooters Hill Road, SE3

£465,000

A beautifully presented two double bedroom basement conversion flat, featuring its own private entrance, a spacious entrance hall, and a separate kitchen, all finished to a high standard throughout. The flat offers bright and well-balanced accommodation with generous room proportions, attractive character features, and a welcoming feel throughout. Further benefits include off-street parking and excellent storage.

Situated in an excellent position, minutes from the Heath and close to Blackheath Royal Standard for its shops, cafés and amenities. There is a regular bus route to North Greenwich Jubilee line, and the property is in close proximity to both Blackheath and Westcombe Park

### Features

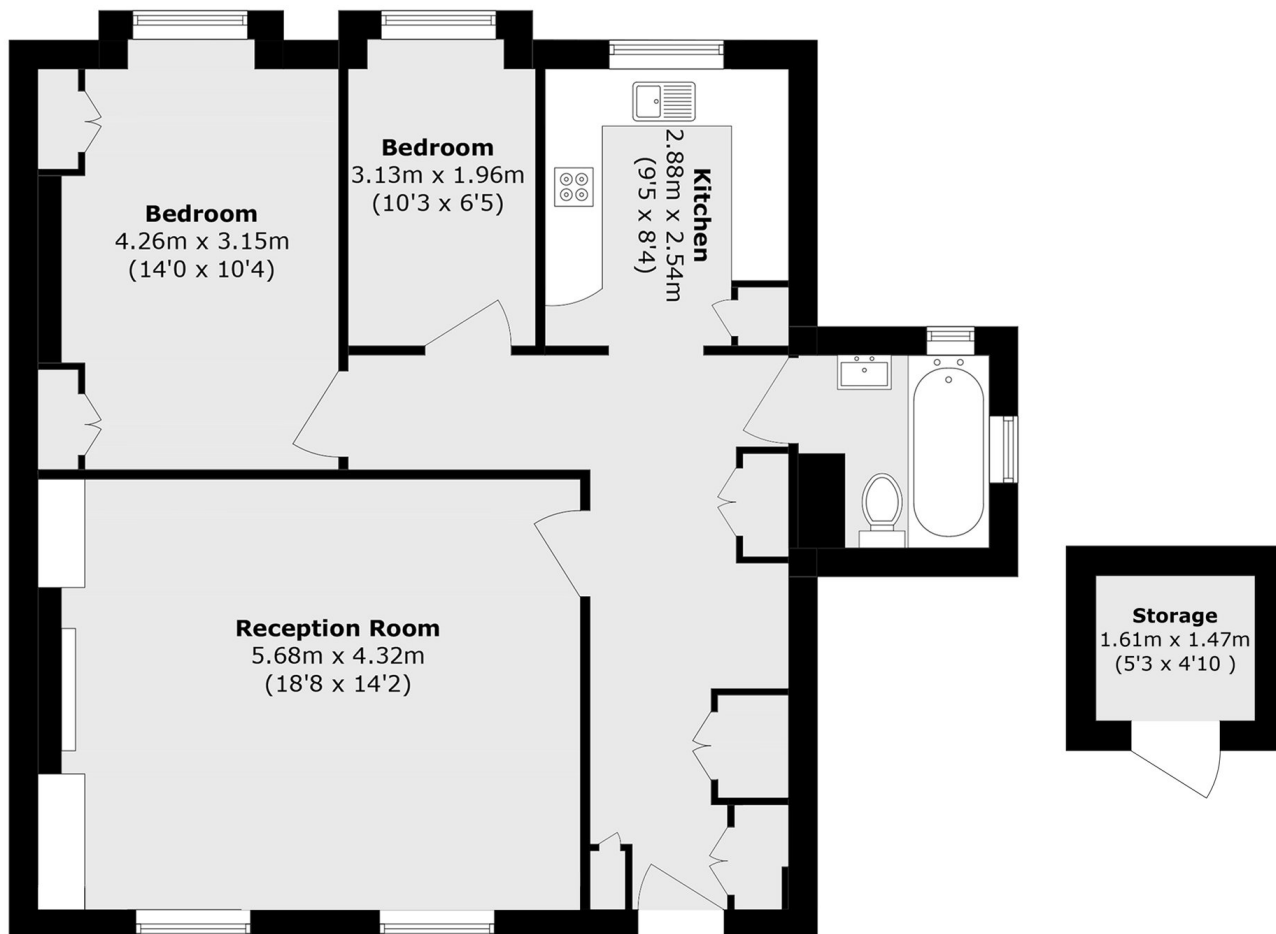
- Ground Floor
- Two Bedroom
- Minutes From The Heath
- Own Front Door
- Close To Shops & Transport
- Off Street Parking



**Shooters Hill Road, SE3**



# Shooters Hill Road, London, SE3



## Ground floor

Total area (approx.): 72.4 sq. m (779.3 sq. ft)  
External storage (approx.): 2.3 sq. m (24.7 sq. ft)