

WILKINSON

SALES • LETTINGS • MANAGEMENT

£165,000

High Street, Tewkesbury, GL20



2

Bedrooms



1

Bathroom

101 High Street, Tewkesbury, Gloucestershire, GL20 5JZ |
Info@wilkinsonslm.co.uk

01684 367736



- Duplex Apartment
- Lounge/Dining Room
- Kitchen
- Bathroom
- Two Double Bedrooms
- Gas Central Heating
- Tewkesbury Town Location
- Grade Two Listed
- Share of the Freehold

Wilkinson SLM are excited to bring to the market a deceptively spacious Grade Two listed duplex apartment built in 1796, with two double bedrooms and situated in the heart of Tewkesbury Town.

Stairs from the front door lead to the first floor with a hallway providing access to the bathroom, a handy storage cupboard and the front to back lounge/dining room. A door from the lounge leads to the kitchen which has various base units, free standing cooker, fridge/freezer and dishwasher.

Occupying the second floor is a spacious landing with stunning exposed beams, beautiful views across rooftops towards Tewkesbury Abbey and two double bedrooms.

Bedroom one has the added benefit of built in wardrobes and a handy bed underneath a velux window with views across the river towards the Malvern Hill.

This characteristic home is further complemented by gas central heating, exposed beams throughout and a share of the freehold.

A viewing comes highly recommended.

Lounge/Dining Room 16' 9" x 16' 4" (5.11m x 4.98m)

Maximum Measurements

Kitchen 10' 10" x 6' 1" (3.30m x 1.85m)

Bathroom 10' 7" x 4' 4" (3.23m x 1.32m)

Bedroom One 16' 6" x 14' 10" (5.03m x 4.52m)

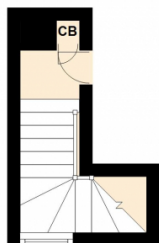
Maximum Measurements

Bedroom Two 7' 3" x 10' 9" (2.21m x 3.28m)

Maximum Measurements

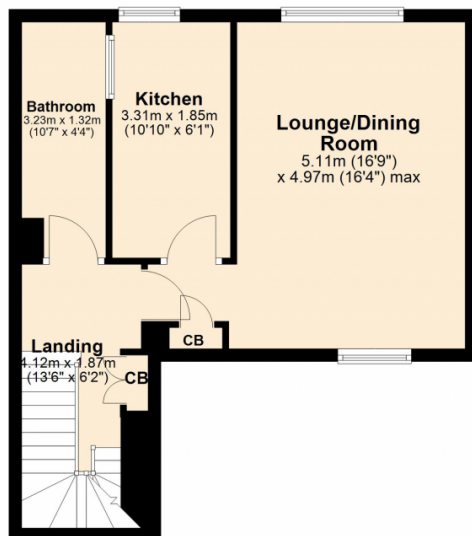
Ground Floor

Approx. 4.0 sq. metres (43.1 sq. feet)



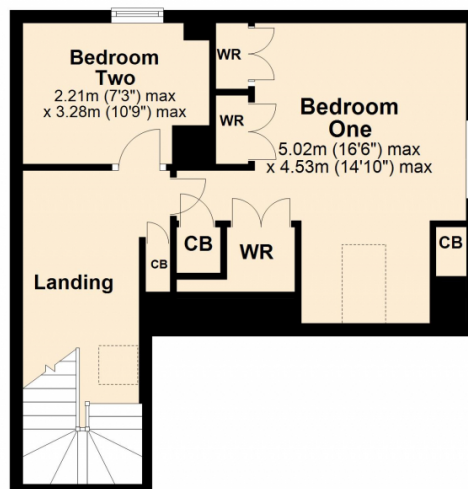
First Floor

Approx. 40.4 sq. metres (434.7 sq. feet)



Second Floor

Approx. 37.6 sq. metres (404.6 sq. feet)



Total area: approx. 82.0 sq. metres (882.3 sq. feet)

