



Bunhill Row, EC1Y

£2,850 Per calendar month

**Dexters**



## Bunhill Row, EC1Y

A two-bedroom duplex apartment, featuring two equally sized bedrooms with ample storage. This apartment boasts a generous living room, a separate kitchen, and breathtaking city views of London on a high floor.

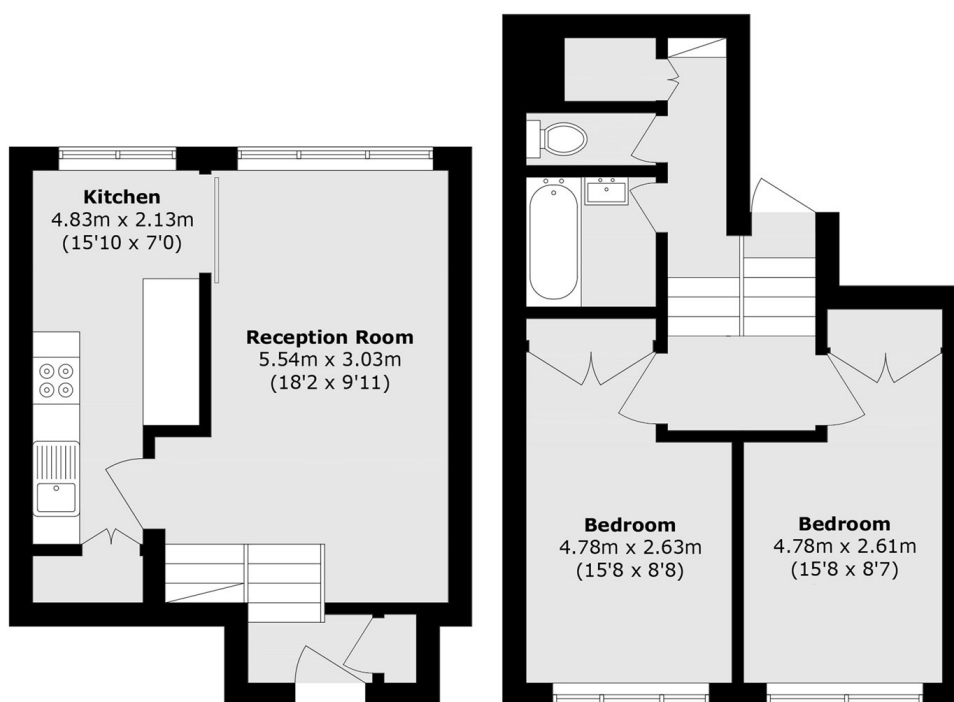
Bunhill Row is within easy walking distance of the City. Locally, both Clerkenwell and Shoreditch offer a wide range of vibrant shops, bars, and restaurants.

### Features

- Two Double Bedrooms
- Duplex
- Great Storage
- Large Reception
- Secure Development
- Amazing Views of London



Bunhill Row,  
London, EC1Y



**Eleventh Floor**

**Tenth Floor**

Total area (approx.): 66.9 sq. m (720.1 sq. ft)