



# Whaddon House

William Mews, SW1X

£6,000 per month  
(£1,384.62 per week)

An immaculately presented 2nd floor apartment with lift access situated in a popular portered development. Additional benefits include a balcony and secure underground parking.

**CHESTERTONS**





# Whaddon House

William Mews, SW1X

- Secure building with porter
- Lift access
- Private balcony
- Ideally located for Knightsbridge/Harrods/Sloane Street



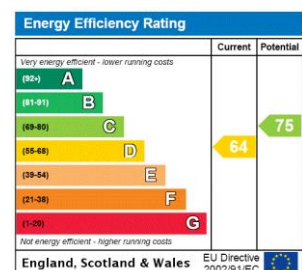


An immaculately presented 2nd floor apartment with lift access situated in a popular portered development. Additional benefits include a balcony and secure underground parking.

The accommodation is circa 1,135 sq. ft. and includes a spacious reception/dining room with sliding doors providing access to the private balcony, separate modern kitchen, two double bedrooms, two bathrooms and a third single bedroom/study.

Located just a short walk from Hyde Park, Harvey Nichols, Harrods and all the boutiques and shops of Sloane Street and Brompton Road.

**Minimum Term:** 12 months  
**Deposit Required:** £8,307.69  
**Local Authority:** City of Westminster  
**Council Tax Band:** G  
**EPC Rating:** D  
**Furnished, Part Furnished, Unfurnished**



### Chestertons Knightsbridge & Belgravia Lettings

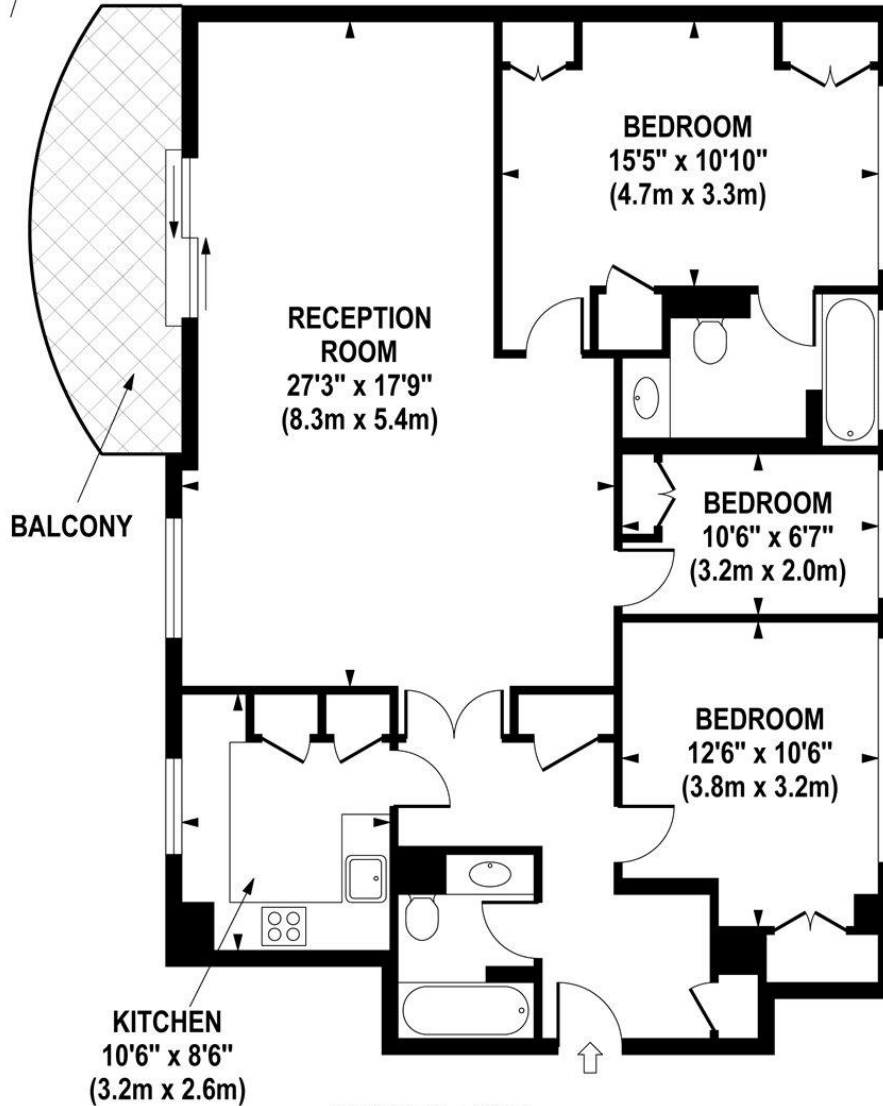
31 Lowndes Street  
 London  
 SW1X 9HX  
[knightsbridgelettingsusers@chestertons.co.uk](mailto:knightsbridgelettingsusers@chestertons.co.uk)  
 02072353530  
[chestertons.co.uk](http://chestertons.co.uk)

Additional tenant charges apply (fees apply to non-AST tenancies only)  
 Tenancy Agreement Fee: £300  
 References per Tenant/Guarantor: £60  
 Inventory check (approx. £100 – £250 inc. VAT)  
[chestertons.co.uk/property-to-rent/applicable-fees](http://chestertons.co.uk/property-to-rent/applicable-fees)



## WHADDON HOUSE

Approximate Gross Internal Area 1135 sq ft / 105.4 sq m



**SECOND FLOOR  
GROSS INTERNAL  
FLOOR AREA 1135 SQ FT**

Although every attempt has been made to ensure accuracy, all measurements are approximate.  
The floor plan's for illustrative purposes only and not to scale. Measured in accordance to RICS standards.

DE-PHOTOGRAPHY.NET

