



## Upper Berkeley Street, W1H

£5,850 Per calendar month

A modern two bedroom two bathroom apartment arranged over the ground and lower ground floors of an attractive Georgian building on Upper Berkeley Street. The property has a separate modern kitchen and guest WC.

Upper Berkeley Street is round the corner from Oxford Street and the boutique shops on Seymour Place and New Quebec Street.

### Features

- Duplex Apartment
- Two Bedrooms
- Two Bathrooms
- Modern Spec
- Unfurnished
- The Portman Estate

# Upper Berkeley Street, London, W1H

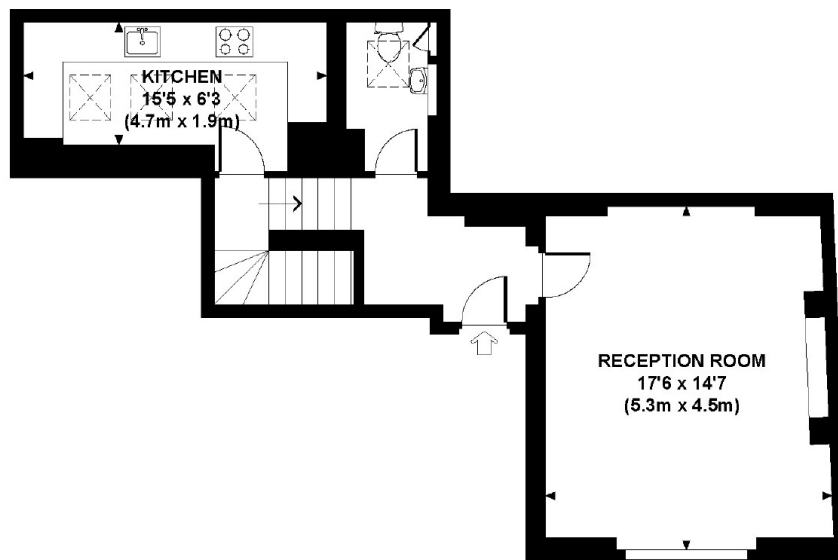
## UPPER BERKLEY STREET, W1

Approx. gross internal area

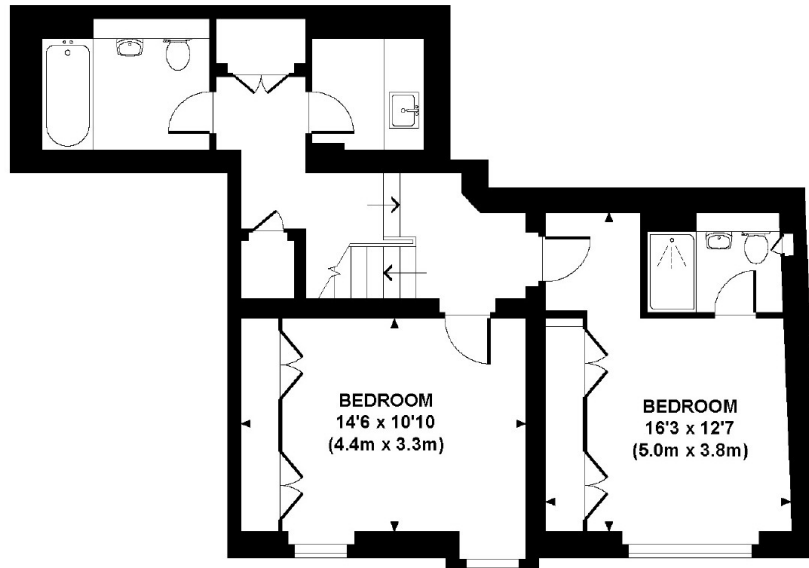
1113 Sq Ft. / 103.4 Sq M.

Representation of current layout

Not to scale.



GROUND FLOOR



LOWER GROUND FLOOR