



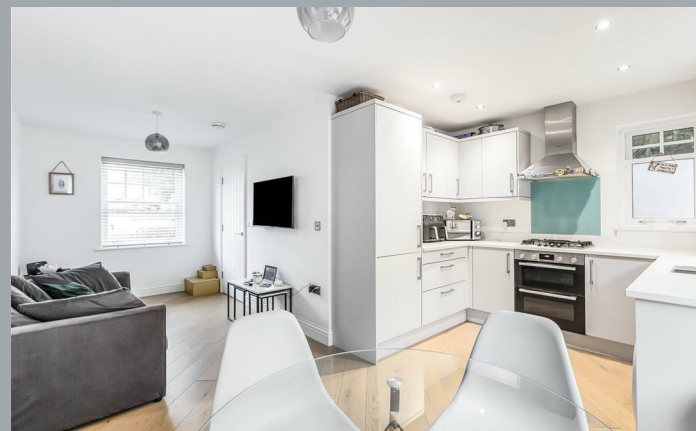
244d, Hertingfordbury Road, Hertford

SG14 2LG

Price Guide £415,000



[stevenoates.com](http://stevenoates.com)



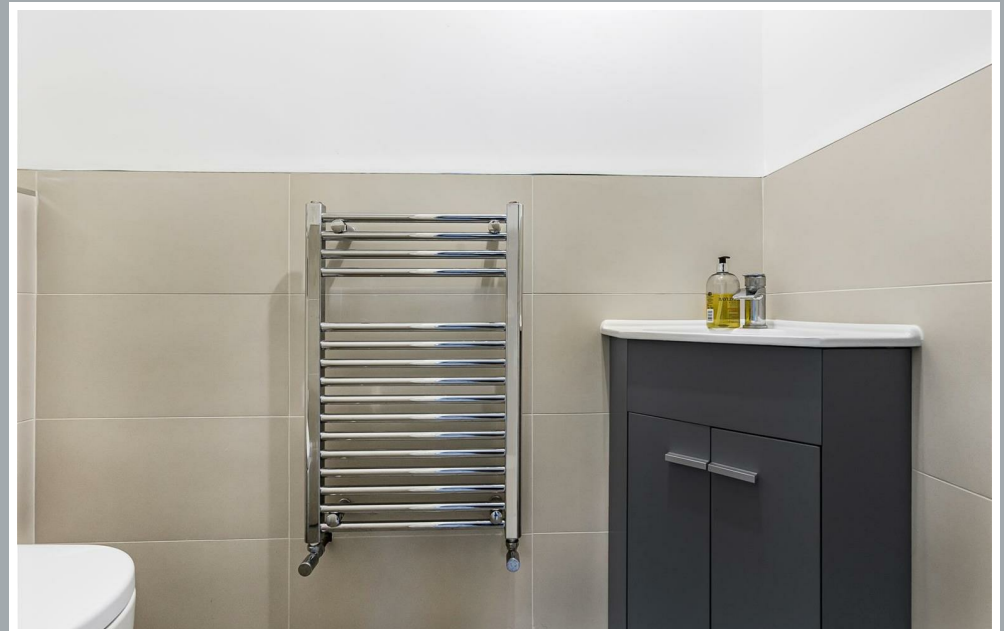
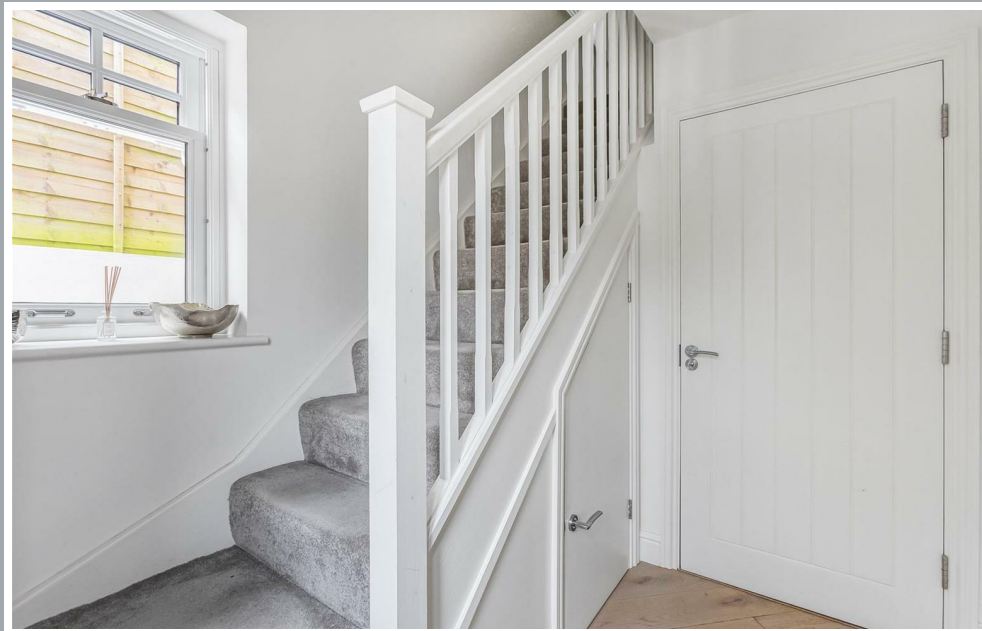
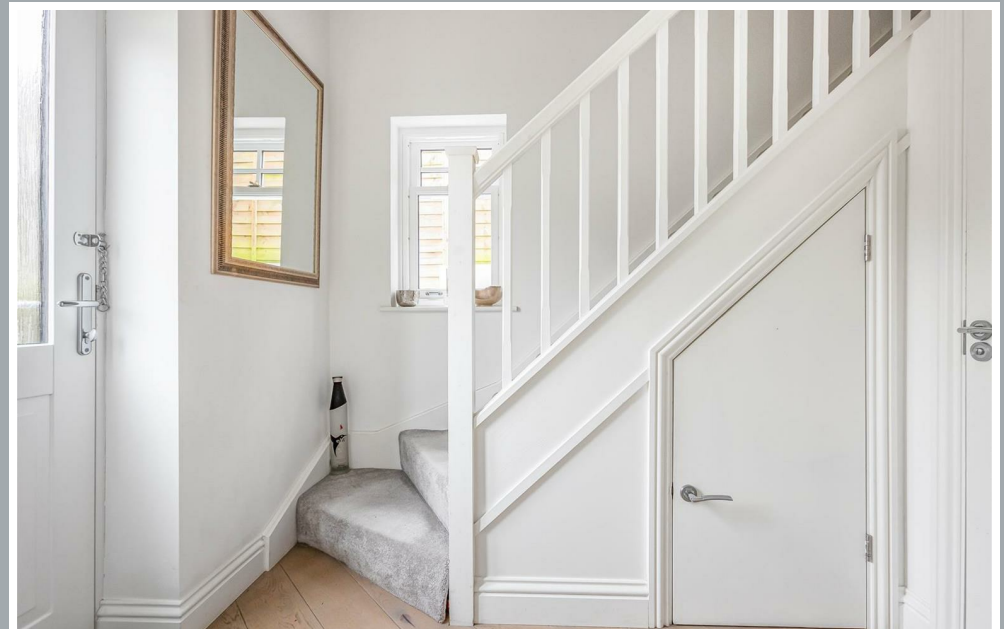
## 244d Hertingfordbury Road, Hertingfordbury, Hertford, SG14 2LG

A beautifully appointed 2 bedroom end of terrace house located in the heart of the highly sought after village of Hertingfordbury on outskirts of Hertford itself. The property is less than 6 years old, finished to a high standard and comprises of an entrance hall with downstairs wc, a open plan living room opening to a fully integrated kitchen. On the first floor, there are 2 double bedrooms and a family bathroom. Externally, the property benefits from an enclosed front garden and a landscaped rear courtyard style garden. There is allocated parking for one car and viewing is highly recommended.

Occupying an enviable position in the heart of this highly sought after village on the western outskirts of Hertford, the property is only a short distance (1.1 miles) from Hertford North mainline station which serves London's Moorgate and Hertford town centre is less than 2.0 miles away. The village of Hertingfordbury benefits from an active community with facilities including a cricket green, tennis courts and a highly acclaimed newly refurbished village pub, The White Horse.



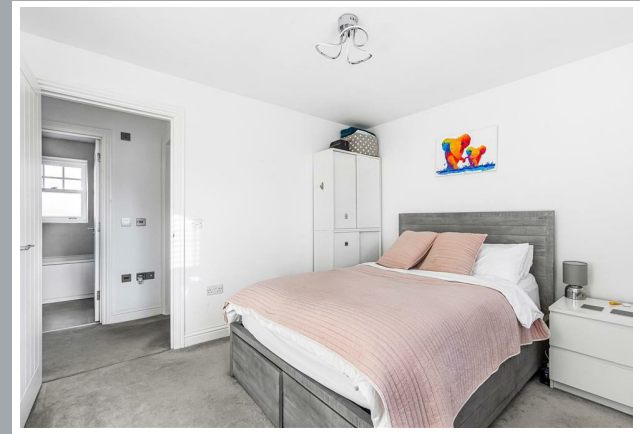
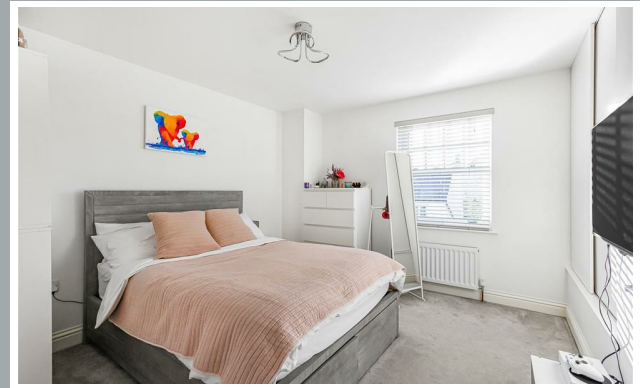
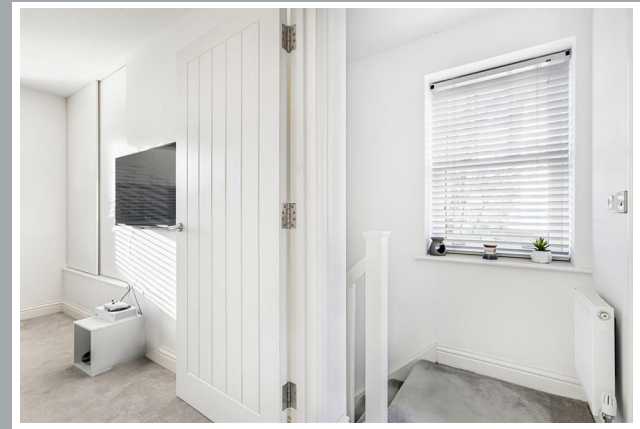
70 Fore Street, Hertford, Hertfordshire, SG14 1BY



70 Fore Street, Hertford, Hertfordshire, SG14 1BY



70 Fore Street, Hertford, Hertfordshire, SG14 1BY



70 Fore Street, Hertford, Hertfordshire, SG14 1BY



70 Fore Street, Hertford, Hertfordshire, SG14 1BY

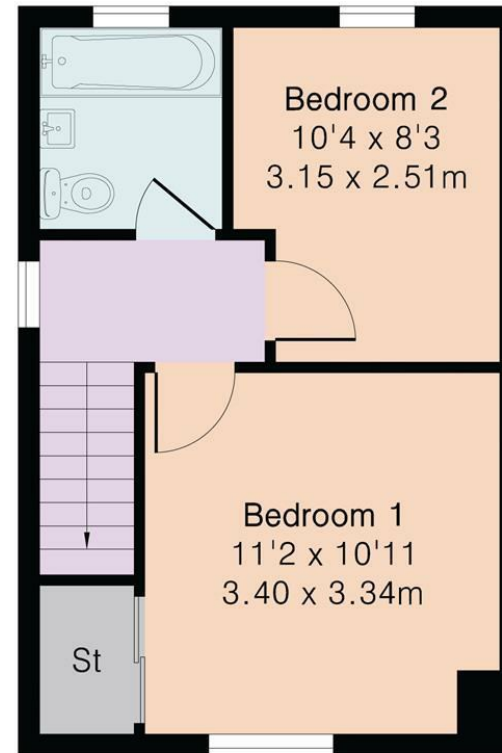
**Approximate Gross Internal Area 601 sq ft - 56 sq m**

Ground Floor Area 291 sq ft – 27 sq m

First Floor Area 310 sq ft – 29 sq m



Ground Floor



First Floor

These particulars, whilst believed to be accurate are set out as a general outline only for guidance and do not constitute any part of an offer or contract. Intending purchasers should not rely on them as statements of representation of fact, but must satisfy themselves by inspection or otherwise as to their accuracy. No person in this firm's employment has the authority to make or give any representation or warranty in respect of the property.



[stevenoates.com](http://stevenoates.com)