

Frank Harris & Co.



Albert Embankment, SE1

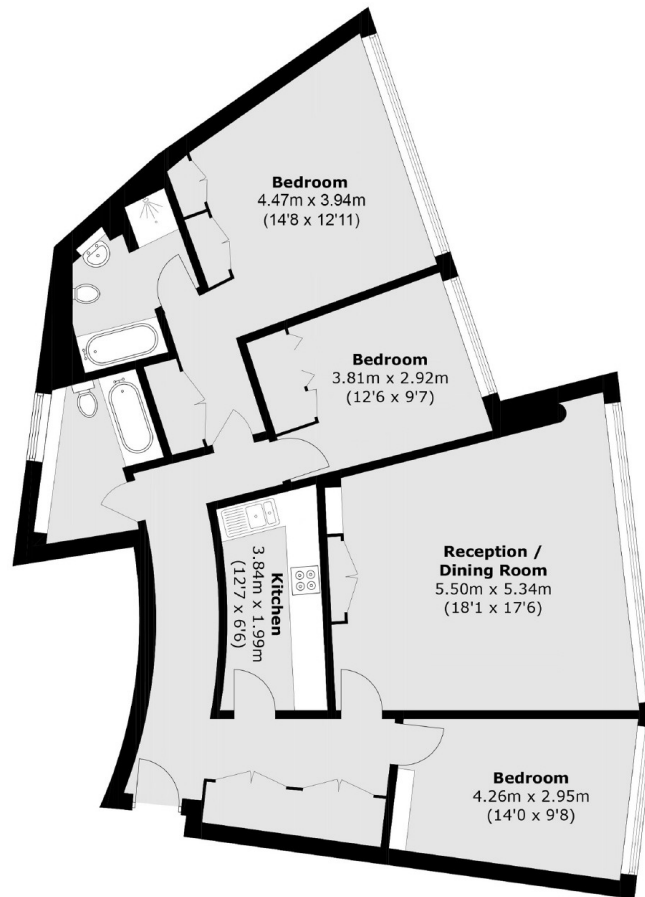
£980 pcm

Three bedroom, two bathroom apartment on the sixth floor within the prestigious Parliament View Apartments. Views out to the river Thames and Houses of Parliament.

Albert Embankment runs along the picturesque, South Bank of the River Thames and offers uninterrupted views of the Houses of Parliament and the London Eye.

- Three Double Bedrooms • Two Bathrooms • Furnished •
- Concierge • Resident's Gym • River Views •

Frank Harris & Co.



Sixth Floor

Total area (approx.): 108.4 sq. m (1,166.8 sq. ft)

Frank Harris & Co. South Bank and Waterloo
123 Stamford Street, London,
SE1 9NN
020 7590 7100
southbanklettings@frankharris.co.uk

Energy Rating: C. We aim to make our particulars both accurate and reliable. However they are not guaranteed; nor do they form part of an offer or contract. If you require clarification on any points then please contact us, especially if you're traveling some distance to view. Please note that appliances and heating systems have not been tested and therefore no warranties can be given as to their good working order.

