

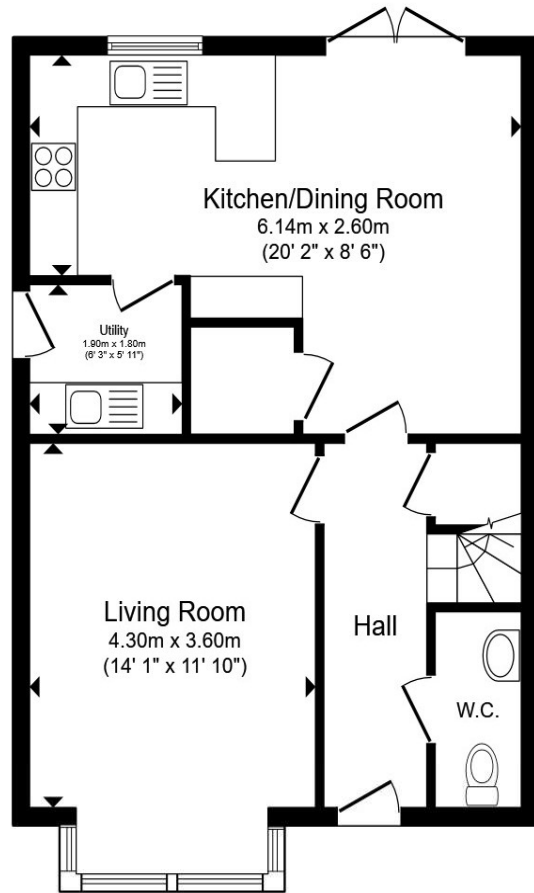


Bishops Field, Fordham, Ely, CB7 6AA

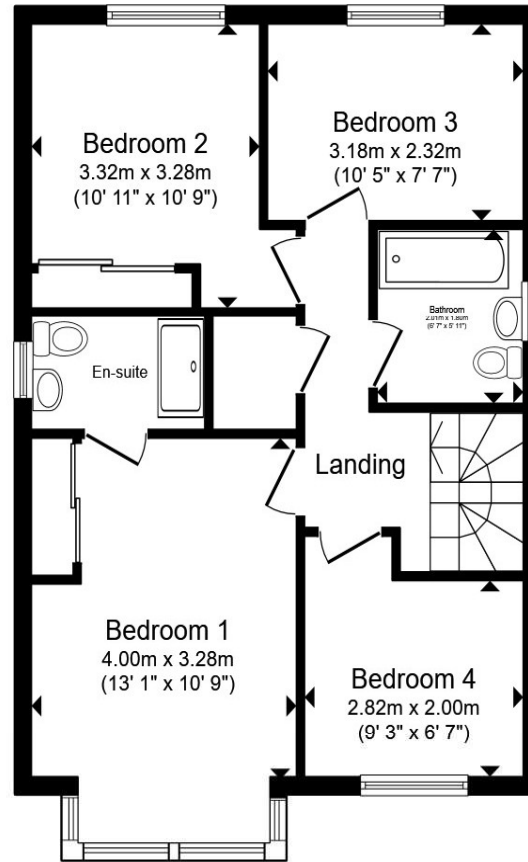
welcome to Bishops Field, Fordham

A modern, greatly improved, energy efficient, 4 bedroom, detached family home of about 1,195 sq ft, with a south facing garden, located within a select cul-de-sac in Fordham. Easy access to Soham Village College, Fordham Primary School and local amenities.





Ground Floor



First Floor

Total floor area 111.0 m² (1,195 sq.ft.) approx

This floor plan is for illustrative purposes only. It is not drawn to scale. Any measurements, floor areas (including any total floor area), openings and orientation are approximate. No details are guaranteed, they cannot be relied upon for any purpose and they do not form part of any agreement. No liability is taken for any error, omission or misstatement. A party must rely upon its own inspection(s). Powered by www.focalagent.com



Accommodation Details -

Entrance Hall

W/C

Living Room

14' 1" x 11' 10" (4.29m x 3.61m)

Kitchen/Dining Room

20' 4" x 8' 6" (6.20m x 2.59m)

Utility Room

6' 3" x 5' 11" (1.91m x 1.80m)

First Floor Landing

Bedroom One

13' 1" x 10' 9" (3.99m x 3.28m)

Ensuite Shower Room

Bedroom Two

11' x 10' 9" (3.35m x 3.28m)

Bedroom Three

10' 5" x 7' 7" (3.17m x 2.31m)

Bedroom Four

9' 3" x 6' 7" (2.82m x 2.01m)

Bathroom

Outside

Front

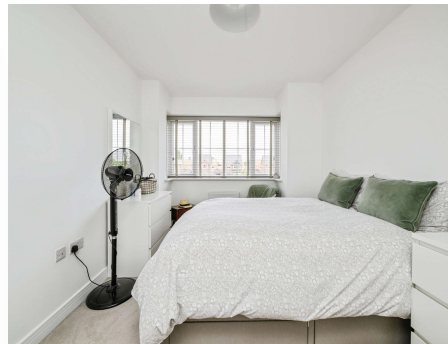
Rear Garden

welcome to Bishops Field, Fordham

- Four Bedroom Detached Home
- Stunning Presentation
- South Facing Garden
- Good Size Fully Landscaped Garden
- Garage

Tenure: Freehold EPC Rating: B
Council Tax Band: E

£475,000



Please note the marker reflects the
postcode not the actual property

view this property online [sequencehome.co.uk/Property/NEM100197](https://www.sequencehome.co.uk/Property/NEM100197)



Property Ref:
NEM100197 - 0003

1. MONEY LAUNDERING REGULATIONS Intending purchasers will be asked to produce identification documentation at a later stage and we would ask for your co-operation in order that there is no delay in agreeing the sale. 2. These particulars do not constitute part or all of an offer or contract. 3. The measurements indicated are supplied for guidance only and as such must be considered incorrect. Potential buyers are advised to recheck measurements before committing to any expense. 4. We have not tested any apparatus, equipment, fixtures or services and it is in the buyers interest to check the working condition of any appliances. 5. Where an EPC, or a Home Report (Scotland only) is held for this property, it is available for inspection at the branch by appointment. If you require a printed version of a Home Report, you will need to pay a reasonable production charge reflecting printing and other costs. 6. We are not able to offer an opinion either written or verbal on the content of these reports and this must be obtained from your legal representative. 7. Whilst we take care in preparing these reports, a buyer should ensure that his/her legal representative confirms as soon as possible all matters relating to title including the extent and boundaries of the property and other important matters before exchange of contracts.



01638 660303



newmarket@tylers.net



Meldreth House Wellington Street,
NEWMARKET, Suffolk, CB8 0HT



[sequencehome.co.uk](https://www.sequencehome.co.uk)