



Clive Road, SE21 | Guide Price £475,000

02087028111

dulwichvillage@pedderproperty.com

pedder
We live local



In General

- A split-level apartment for sale in West Dulwich
- Particularly spacious - 994 sq ft
- Three bedrooms (or two bedrooms and a study)
- 20' lounge/dining room
- Kitchen/breakfast room
- Modern bathroom
- Secluded garden to the rear
- Popular location
- Offered with no onward chain

In Detail

A three bedroom split-level Edwardian apartment for sale in Clive Road, West Dulwich, SE21.

With a gross internal area of 994 sq ft the property offers particularly spacious and well presented accommodation over two floors comprising three bedrooms (or two bedrooms and a study), a large 20' x 12' lounge/dining room, a well-appointed kitchen and modern bathroom. From the kitchen there is access to a small rear terrace and an external staircase giving direct access to the garden.

This lovely apartment is located on a popular tree-lined residential road in West Dulwich with easy access to a variety of local amenities and numerous shops, cafes and restaurants. Excellent transport links are close-by from West Dulwich station (direct services to London Victoria and London Blackfriars) and Gipsy Hill (direct services to London Bridge and London Victoria). Regular bus services to Central London run along nearby South Croxted Road. Outstanding state schools including Elm Wood Primary and Kingsdale Foundation School are within close proximity.

The property is offered with no onward chain.

EPC: E | Council Tax Band: D | Lease: 144 years remaining | SC: Nil | GR: £250 pa | BI: £588 pa

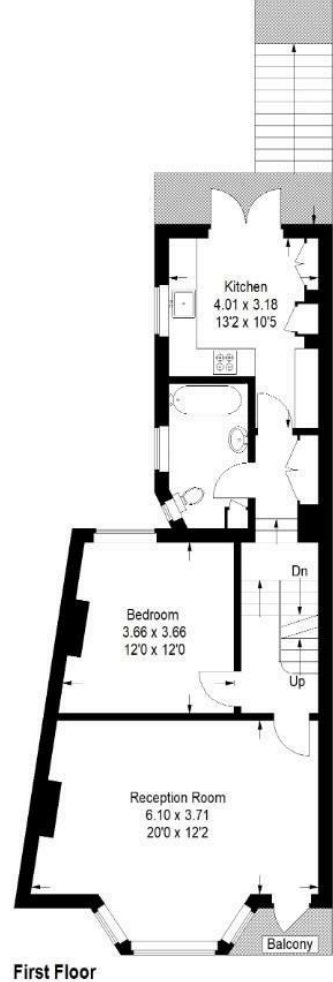


Floorplan

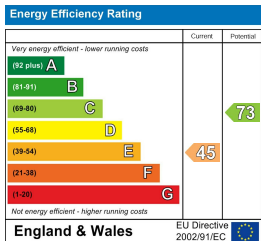
Clive Road, SE21

Approximate Gross Internal Area
(Excluding Eaves)
92.3 sq m / 994 sq ft

12.80 x 1.65
42'0" x 5'5"
(Approx)



Copyright www.pedderproperty.com © 2025
These plans are for representation purposes only as defined by RICS - Code of Measuring Practice.
Not drawn to Scale. Windows and door openings are approximate. Please check all dimensions, shapes and compass bearings before making any decisions reliant upon them.



Pedder Property Ltd trading as Pedder for themselves and for the vendor/landlord of this property whose agents they are, give notice that (1) these particulars do not constitute any part of an offer or contract, (2) all statements contained within these particulars are made without responsibility on the part of Pedder or the vendor/landlord, (3) whilst made in good faith, none of the statements contained within these particulars are to be relied upon as a statement of representation or fact, (4) any intending purchaser/tenant must satisfy him/herself by inspection or otherwise as to the correctness of each of the statements contained within these particulars, (5) the vendor/landlord does not make or give either Pedder or any person in their employment any authority to make or give representation or warranty whatsoever in relation to this property.