



Roman Road, London, E3

BUTLER & STAG



Superbly located one bedroom apartment with high ceilings, set within a period conversion on Roman Road.



- One Bedroom Apartment
- Open-Plan Kitchen/Living
- Surrounded by Excellent Amenities
- Part Furnished
- First Floor Conversion
- High Ceilings and Period Features
- Victoria Park Moments Away
- Available from 18th June 2026

With the historical Roman Road Market and the wonderful green spaces of Victoria Park just moments away, this property really is set right in the social hub of trendy Bow.

Comprising of a generously proportioned living/entertaining space which is open-plan to a sleek fitted kitchen, a large double bedroom and smart bathroom complete the property. Wooden floorboards and sash windows contribute to the perfect blend of charm and style.

Excellent local amenities, good bus routes towards the city and Mile End underground station are all on hand. Offered part furnished from 18th June, this apartment perfectly suits a single professional or a couple.

Council Tax Band B
EPC Rating D

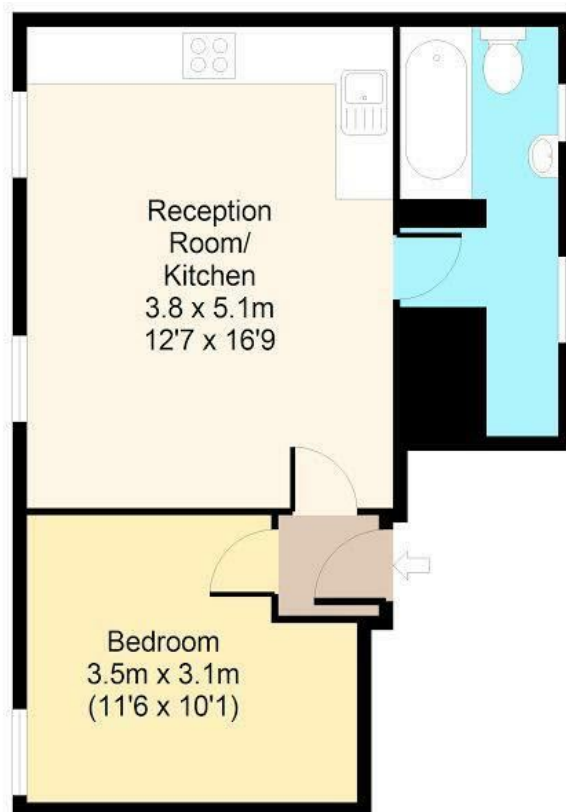




Roman Road, E3

First Floor

Approx. 37 Sq. meters (400 Sq. feet)



Total area: approx. 37 Sq. meters (400 Sq. feet)

For illustration purposes only - not to scale

www.londonpropertyassessments.co.uk

BUTLER & STAG

☎ 020 8102 1236

🏠 508 Roman Road, Bow, London, E3 5LU

✉ bow@butlerandstag.com

www.butlerandstag.uk

IMPORTANT NOTICE - These particulars have been prepared in good faith and they are not intended to constitute part of an offer or contract. We have not performed a structural survey on this property and the services, appliances and specific fittings have not been tested. All photographs, measurements, floor plans and distances referred to are given as a guide and should not be relied upon.