



3 Bedrooms | 2 Bathrooms | 1 Reception Room

Woodcote Grove Road | Coulsdon | CR5 2AN

**£2,150 PCM**

LOFT



Woodcote Grove Road | Coulsdon |  
CR5 2AN  
£2,150

- Exclusively LET off-market by LOFT Estate Agents
- Stunning development of FIVE brand new apartments to rent exclusively marketed
- Bi-fold doors leading to your private rear garden
- Three double bedrooms and an en-suite to primary bedroom
- Allocated parking space and EV charger
- High specification throughout integrated appliances and hard flooring
- Bright open plan living and stunning, original bay window to primary bedroom
- Excellent location for schools and local amenities



High quality,  
thoughtfully designed  
an conveniently  
located. Spacious,  
newly converted  
apartments, available  
to rent immediately!



## Ground Floor

### Hallway

### Kitchen/Reception Room

30'3 x 10'6 (9.22m x 3.20m)

### Bedroom

14'10 x 14'1 (4.52m x 4.29m)

### En-suite

### Bedroom

12'9 x 9'9 (3.89m x 2.97m)

### Bedroom

12'4 x 9'8 (3.76m x 2.95m)

### Bathrom

### Outside

### Private Garden

231 x 11'4 (70.41m x 3.45m)

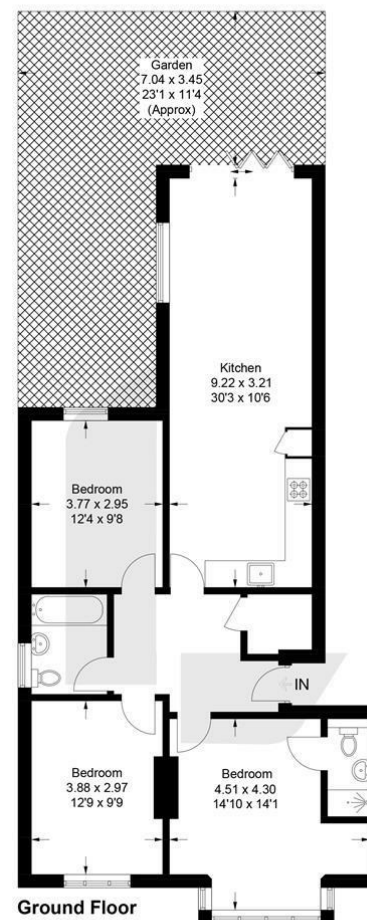
### Allocated Parking





## Woodcote Grove Road, CR5

Approximate Gross Internal Area = 87.5 sq m / 942 sq ft



This plan is for layout guidance only. Not drawn to scale unless stated. Windows and door openings are approximate. Whilst every care is taken in the preparation of this plan, please check all dimensions, shapes and compass bearings before making any decisions reliant upon them. (ID1264651)

EPC Rating:

23a High Street  
Purley  
Surrey  
CR8 2AF  
0208 660 8070  
hello@loft-estates.co.uk